

**Autumn 2008**



© Copyright Ipswich Borough Council Museums and Galleries

**Ipswich Museums**  
**Friends**  
**Newsletter**

### The Friends of the Ipswich Museums

**Newsletter** is published quarterly and distributed free to all members. The FOIM was set up in 1934 to support the work and development of the Ipswich Museums: Ipswich Museum in the High Street (including Gallery 3 at the Town Hall) , Christchurch Mansion and the Wolsey Gallery in Christchurch Park. Since April 2007 the Ipswich Museums have been managed as part of the Colchester and Ipswich Museum Service.

Friends continue to provide financial support to the Ipswich Museums as well as acting as volunteers. The Friends run outings, lectures and other events for their members.

The Friends provide guided tours of both the Mansion and the Museum, including free taster tours of the Mansion on Wednesday afternoons during British Summer Time. Tours can be booked by contacting the Mansion (see page 8).

FOIM is a member of the British Association of Friends of Museums and Ipswich Arts Association.

Contributions to the Winter 2008/9 Newsletter should be sent to Mary Halliwell by 3 November 2008 (address on back cover)

## Contents

Editor's Notes	3
IAA Discounts	3
Chairman's Message	4
Peter Berridge's Column	5
Friends Events	6
Mansion Guide Notes	8
New Archaeology Curator	9
Museum Movements	10
Jug from Cyprus	12
1960s & 1970s Costume	13
Recent Treasure	14
Treasures of Xuzhou	15
Friends' News	18
From the Membership Secretary	19
Museum Events	20
Visual Arts Ipswich	22
Other Events	23
FOIM Council 2008-9	24
Corporate Members	24

**Cover Illustration: *Still Life*** by Ellen Ladell, active 1886-1898. This painting is on display in Christchurch Mansion.

Our WEB site is currently under construction. Please visit it at [www.foim.org.uk](http://www.foim.org.uk). Jerry Latham would welcome your comments.

## Editor's Notes

As this edition goes to press our TVs and newspapers are dominated by news from the Olympics in China. It is no surprise that the Museum Service has also taken up this theme. There have been numerous Chinese activities for Children throughout the Summer, including a Silk Trail Quiz covering all three of the Ipswich sites.

Our own Chinese Collection is on display in Gallery 3 while Colchester Castle opened its ***Guardians to the King*** Exhibition on 19 July. I enjoyed joining the special Friends reception on the following Saturday evening. Although the figures are small, around two feet high, they are very

expressive and are extremely well displayed. Tom Hodgson tells us all about the area from which they come on page 15. Lynette Burgess, the Museum Service's Marketing Officer, tells me that she is very pleased with visitor numbers and press coverage.

Several leaflets about future events are included with this Newsletter. Mary Hollis has arranged three talks for us before Christmas, Alan Swerdlow has arranged a visit to the Red House Library and provides information about a spring holiday in the Lake District. Paul Bruce has arranged our Christmas party and also a lunch time lecture at Bealings.

**Mary Halliwell**

---

## Ipswich Arts Association Discounts

FOIM is a subscribing member of the Ipswich Arts Association and this entitles its individual members to discounts on certain events promoted by Ipswich Borough Council.

Vera Rogers, secretary to the IAA, has provided the following information:

Ipswich Borough Council has confirmed the continuation of the

arrangement whereby paid-up members of societies affiliated to Ipswich Arts Association may receive special offers on some events promoted by IBC. To obtain these concessions, please produce a current membership card confirming your affiliation to FOIM when booking.

## Chairman's Message

I am delighted to report that the Honourable Gay Strutt has agreed to be our new President. Gay is the widow of Peter Strutt, who also served as our President. As we reported in the Spring Newsletter, our previous president, Richard Cobbold decided to step down at the AGM. I was saddened by his decision and thank him for his eight years of active participation in our society.

The Friends had a very enjoyable visit to Colchester Castle on 27 June, hosted by the Friends of Colchester Museums. We were welcomed by Peter Berridge and

then divided into two groups to go on a tour of the castle dungeons and to enjoy refreshments.

Mary Hollis, our new talks organiser, has provided us with an excellent set of talks for the Autumn. She is working on a further three talks for the Spring and I am sure they will all be well worth attending.

I am always happy to receive your questions and comments.

**Paul Bruce  
Chairman**

01473 738265

pauldbuce@tiscali.co.uk



In the Vaults at Colchester Castle

## Peter Berridge's Column

### Links with China

It has certainly been an interesting few months with the clear highlight being a ten day trip to China, along with Tom Hodgson and Bob Entwistle (see page 15). This was to finalise the loan, from Xuzhou Museum, of the Han dynasty terracotta figurines. This was a very eventful trip, in all sorts of ways, and it was a great privilege to get this opportunity. Hopefully many of you will have now seen the figurines on display in Colchester Castle.

There are a number of reasons why I have started this piece, for the Ipswich Friends, with reference to a Colchester exhibition. Firstly, as a joint museum service it is important that the successes in both towns are acknowledged and shared. Secondly, it was only through the combined skills of staff, from both Colchester and Ipswich, that the exhibition became possible. It was another great example of pooling the talent that we have and, I would also say, releasing it so that it can play out on the larger stage that the joint museum service has helped create.

A third reason is that it may mark the beginning of a major area of emphasis for the museum service in the future. While in China

discussions began about forming a longer term partnership. This is now beginning to come closer to a reality with a Chinese delegation coming to Colchester in early September with the stated intention of formalising such an agreement. Details are still to be worked out, but the Chinese have already expressed great interest in sharing skills through staff exchanges. Some areas that we know they would like to learn more about are collections care, education work, and community engagement. Consequently it looks like there could be a number of opportunities for staff, right across the service, to get the chance to visit China and work alongside Chinese colleagues.

### Ipswich's Tiles

A completely incidental result of the trip came from a visit to the Forbidden City in Beijing. This gave a chance to put into context the roof tiles that are part of the ***Dragons, Silks and Stories Exhibition*** in Gallery 3. These roof tiles originally came from the Forbidden City and to see identical tiles, on top of all the current buildings, not only gave me a greater understanding of the ones on display but also a greater appreciation of their decorative beauty and impact.

## **Visitors to Ipswich**

The last few weeks have also seen some notable visitors to Christchurch Mansion. Firstly the Duke of Gloucester came and unveiled a newly acquired painting by the artist John Moore (see page 18). Then on 6 August there was a visit from Baroness Kay Andrews, Under Secretary of State. It was a pleasure to show her around Christchurch Mansion and share with her some of the treasures such as the Hawstead Panels and the works of Gainsborough and Constable. Over a cup of tea she was also very keen to learn about the experience of creating the joint museum service and the benefits that it has brought. It is quite clear

that the ripple effect of creating Colchester and Ipswich Museum service is spreading wider and that there is a growing interest in what we have achieved.

## **Margaret Catchpole**

To end on an old favourite I need to once again thank people for continuing to send me more information on Margaret Catchpole. Please keep it coming and anything is welcome. In due course I will be making requests for information on other matters.

**Peter Berridge**  
**Museum Service Manager**

---

## **Friends Events**

### **Evening Talks**

Mary Hollis has arranged three talks before Christmas. A further three talks will be arranged for January to March 2009.

experiences and of her plans for Ipswich.

---

### **“New Perspectives”: An Introduction and Welcome to Emma Roodhouse**

**Wed 1 Oct 2008 7.30 pm** at Museum St. Methodist Church

Emma Roodhouse, our new Fine and Decorative Arts Curator will tell us about some of her previous

---

### **“Digging in Morocco”: A talk by Peter Berridge**

**Wed 5 Nov 2008 7.30 pm** at Museum St. Methodist Church

Peter Berridge, our Museums Manager will tell us about an archaeological dig he has recently worked on in Morocco.

---

### **“A Year as Mayor”: A talk by Roger Fern**

**Wed 3 Dec 2008** 7.30 pm at the Council Chamber, Town Hall

Councillor Roger Fern will tell us about his recent term as Mayor of Ipswich and give us a tour of the mayoral offices and the town regalia. As we are limited to 50 for this visit to the Town Hall, **ADVANCE BOOKING IS REQUIRED.**

More information about these talks is given in the enclosed leaflet. Mary Hollis would like volunteers to help with refreshments for the October and November talks.

---

**Lunch Time Talk with Reg Snook— Wed 29 October 2008**

Paul Bruce has arranged another lunchtime talk at *The Admirals Head* in Little Bealings. Reg Snook will speak about Wildlife in Christchurch Park. Reg Snook is a wildlife inspector for DEFRA, specialising in birds of prey. See enclosed leaflet for details.

---

**Return Visit to Britten-Pears Library at Aldeburgh, Tues 28 Oct 2008**

This will be the Friends third visit to the Britten-Pears Library in Aldeburgh. We will see this year's Festival's special exhibition '*The Coming of the Fludde*' which marks two anniversaries: *Noye's*

*Fludde* in its fiftieth year and *Saint Nicholas* in its sixtieth. Some of the original costumes and manuscripts for *Noyes Fludde*, together with rare photos and programmes.

Friends are expected to make their own way to Aldeburgh. Barbara Cole will try and put non-drivers in touch with those who can offer lifts.

A booking form, giving more information, is being distributed with this Newsletter.

---

**Spring Holiday to Cumbria and Dumfries House—22-26 April 2009**

The itinerary includes a visit to Nostell Priory on the way to the Lakes Court Hotel in Carlisle where we stay for 4 nights. During our stay we visit the Arts and Crafts House, Blackwell at Bowness on Windermere, John Ruskin's Brantwood and the recently opened Dumfries House, regarded as the most complete 18th century home in Britain. On the final full day we will have a look at Carlisle and Hadrian's Wall. On the way home we visit to Hardwick Hall (NT) in Derbyshire, almost unchanged since Elizabethan times .

A leaflet giving more information and booking details is being distributed with this Newsletter.

## Mansion Guides Notes



Siobhan writes: It has been a time of change for the Christchurch Mansion Guides with Gavin Kent now responsible for the bookings and tours, and myself as Guide co-ordinator.

I am greatly enjoying my role as it has been a learning curve, but I have been assisted by so many of the guides, particularly the 'two Marys.' I have been truly impressed by the level of knowledge and commitment shown by all those involved with the Guides of Christchurch Mansion.

### **New Tours available now**

Another change is the choice of what we can offer as tours. There is so much to learn about the Mansion, and so many stories to tell. We still offer the general tour, but now have a selection of

six tours for our visitors. They are as follows:

- A general tour
- The Families who lived at the Mansion
- The Family and servants at the Mansion in the Victorian Period
- Who can find a virtuous woman? (Depictions of women of the 16<sup>th</sup> and 17<sup>th</sup> centuries in the Mansion)
- Constable and Gainsborough
- Suffolk Artists

If you would like further information about the tours, please telephone : 01473 433554 or email: [gavin.kent@ipswich.gov.uk](mailto:gavin.kent@ipswich.gov.uk)

Free 30 minute taster tours are still available 2.00pm and 3.00pm Wednesday afternoons, until late October.

### **Guides Training**

We are delighted to welcome Erica Burrows as a new guide. I am sure she will be a great asset to our team. We are always pleased to welcome new guides. Training sessions will be running from November to March, on Wednesdays afternoons. Anyone interested in becoming a guide can contact me on 01473 281551 for more information.

Sadly, Joan Keene has decided to



take a break from guiding. Joan's knowledge of the Mansion was marvellous, and she had a wonderful rapport with young and old visitors alike. On behalf of the guides I would like to say a big

thank you to Joan, for all her hard work.

**Siobhan Steel**  
**Guides Co-ordinator**

---

## Introducing our New Archaeology Curator, Caroline McDonald



Caroline writes: Coming from South London as I do, when I first began work at Colchester Museums as the Finds Liaison Officer in 2003, I described myself to anyone who asked as a 'born-again Essex girl'. Now as a curator of archaeology at the High Street Museum for Colchester and Ipswich Museum Service, it's not only the organisation's name that has changed – perhaps now I will have to be a 'born-again tractor girl'!

I first became interested in 'the past' as a teenager when I developed an obsession for all things 'Arthurian' and fed my

romantic sensibilities about being half-Irish with more Celtic myth and legend than was probably good for me. It was not until I picked up a book about the Iron Age hill fort at South Cadbury – the supposed site of Camelot – that it suddenly occurred to me that there was a truth about the past to be discovered through archaeology.

Despite my growing archaeological interest, I went on to study literature and drama and was very pleased with myself when, after graduating, I achieved my (then) career goal of finding work in television. Five years on I was less pleased about the industry I was working in and felt it only right to have a career crisis before I hit 30! I went freelance to give me space to think about my next move and had my light bulb moment about turning my interest into a career.

I began volunteering with Colchester Museums in 1999, thinking I could pick up the collections knowledge 'as I went

along' and do an MA, but it soon occurred to me that there was too much I wanted to know. I went back to study archaeology at University College London at the highly regarded Institute of Archaeology specialising in British Archaeology and in particular pre-history. I graduated in 2003 and the timing was just right for me to apply for the Finds Liaison job at Colchester. 'Serendipity' is one of my favourite words but volunteering for 4 years, working and doing the degree was a lot of hard work and I was thrilled that it had all paid off and I was an 'archaeologist'.

I spent 3 years as the FLO, liaising with members of the public who found archaeological objects and recording them for the Portable Antiquities Scheme's national database of finds, gaining a lot of knowledge about small finds on the way. After that I continued my extensive contact with the community by creating, devising and delivering a mobile museum project for the service called

'Museum to go'. Mel Hollis, now one of the new education officers at Ipswich, and I took archaeology and other objects on the road to far flung places, including secure units for patients with mental health problems, a prison and the odd Beaver group!

Now I am curator for archaeology based in Ipswich I am slightly pleased with myself again. I may not get my name on the rolling credits but I hope that I can make a real difference to the archaeology collections here in Ipswich and more importantly continue to work with and for the community at large. Projects on the horizon include a temporary exhibition of stunning Anglo-Saxon coins and art objects in Gallery 3 and the start on work to redisplay the Egyptology collection.

As George Eliot said "its never too late to be the person you might have been'!

**Caroline McDonald**  
**Curator of Archaeology**

---

## Museum Movements

*Joan Lyall tells us about changes taking place in the Ipswich collections.*

Since the last edition of the Friends Newsletter we have been continuing to work to create the new library within the High Street Museum and I am very grateful for

Mary Halliwell's help with entering the archaeological volumes on to the spreadsheet and adding or updating the new locations. The library will take many months to

complete but we can already see how it will look now that the shelves and bookcases are in place.

Recently the flywhisk handle (IPSMG: R.1938-1.52) has gone on loan for the exhibition *Polynésie, arts et divinités, 1760-1860* at the Musée du Quai Branly, Paris.

Also now on loan are the wonderful Robert Burrows photographs which had been displayed in the Room Upstairs at Christchurch Mansion and are now on display again in the Reg Driver Centre within Christchurch Park. The keen amateur photographer Robert Burrows, who was born in Ipswich in 1810, took these images of Christchurch Park. The original photographs survive as small sepia prints, held at the Suffolk Records Office, and Stuart Grimwade of the Friends of Christchurch Park had digitally restored them for these displays.

During the last few months we again have acquired some really interesting objects for the collections. I know Danielle Sprecher, our Costume Curator, has mentioned the 1960s dresses (see page 13) which will bring back happy memories for those of us who wore similar outfits. It is



very pleasing that they have gone on display in the Victorian Rooms. Look out for the silver coloured knee length boots, they are just fab!

The oil painting *West Cut, Ipswich Docks by moonlight* by John Moore which is now hanging in the Wolsey Art Gallery was much admired by The Duke of Gloucester during his recent visit (see page 18). The picture was purchased at auction in April.

Eight medals belonging to Frederick Joseph Pratt a shoe-maker from Ipswich born in 1881 were also acquired at auction. Frederick served in three wars: the Boer War, the First World War rising to the rank of Company Sergeant Major and the Second World War.



Ceramics in Store

Some of you will have noticed the scaffolding going up around the east wing of Christchurch Mansion to enable the roof to be repaired. To ensure the safety and security of the collections the furniture, fine

art, glass and ceramics have been moved. I have been coordinating the packing of the glass and ceramics and as anyone who has moved house will know you need to prepare a plan and take your time, carefully wrapping each item and keeping a record of the

contents of the boxes so that you can find them again easily. These objects will be returned to their home locations early next year.

**Joan Lyall**  
**Documentation Officer**

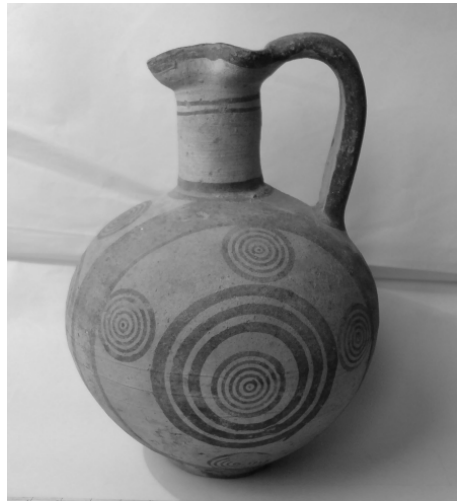
---

## Donation of an ancient jug from Cyprus

*Philip Wise tells us about a recent acquisition.*

Occasionally in the life of a curator an object is offered to the museum which is rather out of the ordinary. In this case the object is a prehistoric earthenware jug from Cyprus which in 1953 was given as a wedding present to a British architect H. T. Cadbury-Brown.

The jug is in remarkably good condition considering that it is over 2,600 years old and is technically described as being of Bichrome IV type, which refers to the fact that it is painted in two colours, red and black, on a white background. The decorative scheme is based on groups of concentric circles which look like targets and the paint colours are still very vivid. The jug is shaped like a globe with a narrow neck, a pouring lip and a strap handle. In all probability it was found in a tomb where these items were placed with the dead in large numbers during the Iron Age in the first millennium BC. It measures 20 cm (8 inches) high.



The jug was given to Mr Cadbury-Brown by a Mr Nicholas Diamantis, the son of Adamantios Diamantis who was a painter, teacher and first director of the Cypriot Folk Art Museum in Nicosia. Mr Cadbury-Brown, who has now donated the jug to the museum service, is also an eminent figure. Born in 1913 he studied architecture before World War II and made his name in post-war reconstruction projects

including working on the Festival of Britain in 1951. Subsequently he designed halls of residence for Birmingham and Essex Universities and worked on an extension to the Royal College of Art and the internal remodelling of Burlington House, the home of the Royal Academy in London. He has lived in Suffolk for many years.

As well as being a very beautiful example of prehistoric pottery, the jug also has an interesting history.

**Philip J Wise**  
**Heritage Manager**

---

## 1960s and 1970s Costume on Display at Christchurch Mansion



Two recent acquisitions are the inspiration for a display of 1960s and 1970s costume at Christchurch Mansion from July until December this year. The two dresses were both purchased in Ipswich and worn by the donor to Royal Air Force summer balls. The first is a white and floral print

evening dress the donor bought in June 1968 from the Grosvenor fashion shop. The second is a bright yellow polyester pleated evening dress bought in June 1978, the design of which echoes ancient Greek and Roman dress and the 1920s pleated dresses by the designer Fortuny.

Also on display is a Mary Quant Ginger Group label mini dress from the mid-1960s and a black and white Susan Small dress and jacket with matching hat from the late 1960s. Other accessories include three hats with their original hat boxes which were bought from Frank Mason's in Ipswich and a pair of silver lurex knee-high boots from the early 1970s.

The costume currently on display makes up the majority of items in the Ipswich costume collection dating from the 1960s and 1970s. We have very few items of costume from the last 30 years so the two recent donations contribute greatly to strengthening the collection.

**Danielle Sprecher**  
**Costume Curator**

---

## A Recent Treasure Acquisition

*Caroline McDonald tells us about some recently acquired gold rings.*

The number of treasure items being acquired by the museum service continues to grow with the latest addition of three medieval gold finger rings found within a small area of a ploughed field in the location of Diss.

Two date from the 12<sup>th</sup> to 13<sup>th</sup> century and, coincidentally, are both set with cabochon sapphires. Both are attractive rings that would have been worn by someone of social standing.



The third ring dates from the 15<sup>th</sup> century and is part of a group known as 'iconographic' rings, as a devotional scene or image is engraved on the flat bezel. In this case, this marvellous ring shows a representation of the Trinity; the seated figure of God the father, supporting Christ on the cross with the Holy Spirit represented by a dove flying above. The inside of the ring has an inscription that would once have been picked out in black which reads 'EN BON ESPOER' meaning 'in good hope'.

Rings like this were used at weddings and were popular New Year's presents (for those that could afford it) in England and Scotland from the late 14<sup>th</sup> century. Given their iconographic style, rings like this ceased to be

produced following the religious upheaval caused by the 16<sup>th</sup> century reformation of the English church and the move towards Protestantism.

All three rings were most likely lost at different times and each owner, though separated by tens or hundreds of years no doubt felt the loss of such a precious object keenly, especially if one had been a wedding ring.

To discover them all within such a small area of farm land is astounding and the museum is delighted. Though ultimately coming from someone else's loss, we now have three outstanding finger rings with which to tell the story of wealth, privilege and religious devotion in medieval East Anglia.

**Caroline McDonald**  
**Curator of Archaeology**

---

## Han Dynasty Treasures of Xuzhou - Museum Staff Visit

*Tom Hodgson tells us about the visit to China made by himself, Peter Berridge and Bob Entwistle to make final arrangements for the **Guardians to the King** Exhibition. They saw many of the original*

I hope that you all have, or are planning to visit Colchester Castle Museum to see the exhibition **Guardians to the King** before it ends on 2 November.

The exhibition is a result of the close ties that have existed for 20 years between Essex and Jiangsu Province in China. Xuzhou Museum offered the figurines on loan as part of the Jiangsu Festival that has been arranged in Essex this year. It was decided that Colchester Castle Museum would be the best venue and an agreement was signed between the two museums. The agreement included a reciprocal visit by

delegations from both museums in order to accompany the figurines on their journey to Colchester and ensure their safe installation in the Castle. I was a member of the delegation to Xuzhou. The trip gave me a chance to learn more about the background to the figurines that we have borrowed.

Xuzhou is in the north of Jiangsu Province (between Beijing and Shanghai). Despite an interest in geography, I must admit that I had never heard of Xuzhou previously, which was a slight embarrassment since it is a city of 1.8m people. It is not on the foreign tourist circuit, in fact I could find only one



Xuzhou Han Terracotta  
Army Museum

guidebook that even mentioned the city, and that in a single short and dismissive paragraph. I can only say that if a city in Britain had the same number and quality of archaeological sites, it would be on the must visit list.

A tour of Xuzhou Museum on the first day revealed the importance of the archaeology. Xuzhou has a long history. The city was originally called Pengcheng and traces its origins back to the Neolithic, 6,000 years ago. The museum has a fine collection of tripod pots and other items of pottery and stone from this period.

Pengcheng's heyday was during

the Western Han Dynasty, over 2,000 years ago when it was the capital of the kings of Chu. Liu Bang, the first Han Emperor who was born near Pengcheng, set up his younger half brother as King of Chu as a reward for supporting him in becoming emperor. There were 12 kings in all, ruling from 201BC to AD8. They were buried in tombs cut into the rocky hillsides around the city and it is the finds from these royal tombs that form the centrepiece of Xuzhou Museum's displays.

As well as many pottery figurines, made to protect and serve the king in the afterlife, there are also items of bronze, gold and jade. These include a spectacular jade burial suit, discovered in Shizishan tomb, that has been painstakingly restored to its original glory. In fact it looks so good that I thought it was a replica! Jade was, and still is, highly prized in China because of its hardness and durability – qualities that were seen as transferring to the wearer to give long life or to preserve the body after death.

Over the next few days we visited further Han Dynasty sites. Of particular interest were the tombs at Shizishan and Guishan. Shizishan (Lion Hill) is a complex of sites and the source of most of the figurines on display in the Guardians to the King exhibition. In 1984 a series of pits containing



4,000 soldiers drawn up in columns were discovered by Professor Li, now the Curator of Xuzhou Museum. He realised that there must be a royal tomb nearby, but it took him a decade to locate it.

The warrior pits are now showcased within a building that has some of the best interpretation panels that I have seen. The fact that the text on the graphic panels is in Chinese hardly detracted from my understanding of the information being conveyed about what the figurines tell us of soldiers and warfare during the Han Dynasty. Two adjoining pits that contained models of horses and chariots are now preserved in buildings in the middle of a lake.

The tomb itself is fronted by a visitor centre. Once inside a sloping ramp leads down between high rock walls into a low corridor off which are a number of rooms: kitchens, armouries, stables and latrines as well as the burial chamber. There is no direct evidence telling which of the kings was buried here in the jade suit, but circumstantial evidence points to it being the tomb of Liu Wu, the third King of Chu who committed suicide in 154 BC after a failed rebellion against the Emperor.

Guishan (Tortoise Hill) tomb was even more fascinating to visit. It is a double tomb, built for Liu Zhu,

the sixth King of Chu, and his wife. There are two parallel corridors leading into the hillside with a symmetrical sequence of rooms and a linking passage deep inside the hill. The floors, walls and ceilings have been carved at perfect right angles. Channels cut in the floor of the corridors were explained in an excellent film (in Chinese, but, again because of the clarity of the graphics, perfectly intelligible) as a hydraulic system allowing 16 eight ton granite blocks to be moved into position to seal the entrance corridor. Despite this immense precaution, both here and at Shizishan, the tombs were raided over the centuries. However, the robbers only discovered a fraction of the contents, which has left so much for us to enjoy.

**Tom Hodgson**  
**Community History Manager**



Two Ipswich Council Members at Colchester Castle

## Friends News

### Visit of the Duke of Gloucester

The Duke of Gloucester visited Christchurch Mansion in Ipswich on 7

July as part of a tour of the town. As Vice-President of the Friends of the Ipswich Museums, and as area coordinator of British Association of Friends of Museums - of which the Duke is President - Alan Swerdlow was presented to His Royal Highness.



The Duke of Gloucester in the Wolsey Gallery with Emma Roodhouse, Councillor Judy Terry and Alan Swerdlow

### Ipswich Friends Visit to “Guardians of the King”

On 26 July, a coach load of Friends spent the evening at the **Guardians to the King Exhibition** together with a group of Colchester Friends. All were very impressed by the Chinese figurines and the magnificent way

in which they were displayed.

The exhibition continues until 2 November. Your FOIM membership card provides free entry to Colchester Castle and the exhibition.

Visit to Audley End and Fry Gallery, 6 August 2008

Fifty-five of us, including very welcome some new members, set off for Audley End on 6 August in rather dull weather. On arrival we were greeted and introduced to the property by one of a number of helpful and well-trained young English Heritage staff. Our first stop was the newly opened service yard with evocative displays in the laundries, dairies, larders and a magnificent kitchen in which period dressed interpreters were busy preparing food.

On to the House through the Great Hall and up one of several staircases. If I have a quibble it would be that many of the paintings were difficult to see particularly on such a dull morning. The Adam rooms suggested the change in taste over the period in which the House was occupied. We heard how the House was used as a top secret training station for Polish soldiers during WWII.

The Capability Brown grounds are full of beautiful mature trees. During our visit various open air activities could be enjoyed including falconry and owl displays. Many of us wandered to the organic walled garden, the Parterre and the elegant Tea House Bridge. Members could be spotted enjoying their picnics around the grounds or in the cafe.

A short drive then took us to the Fry Gallery in Saffron Walden where John our driver was able to park right outside. In two groups Gordon Cummings gave a short talk about the Great Bardfield group of artists and the collection the Fry has been able to build up over the years.

The special exhibition of Edward Bawden's war paintings was the

special feature. Meanwhile the sun had come out and the group not in the gallery could enjoy the Bridge End Gardens or walk to the Museum. Tea and biscuits completed the day before we were brought back to Ipswich and on to Woodbridge.

**Alan Swerdlow**



Enjoying tea at the Fry Gallery

---

## From the Membership Secretary

We extend a warm welcome to the Members who have joined since the last newsletter was prepared:-

Mr & Mrs T Burrows

Mr & Mrs R Parry

Mrs B Butler

Mrs P O'Hagan

Mr P Mayer

Mrs B C Fairbairn

Mrs S Carr

also

St. Judes Brewery as Corporate Member.

Thanks to all the Members who responded to my reminder for late subscriptions - only 16 people have been deleted.

**Barbara Cole**  
**Membership Secretary**

## Museum Events

Please ask at Ipswich Museum Reception desks for information about Colchester events including Saturday afternoon **Tea and Talks** and Children's events

### **Christchurch Mansion**

Opening times: Daily 10am - 5pm

### **Museum and Gallery 3**

Opening times: Tues - Sat 10am - 5pm

Mansion: 01473 433554 (also for Bookable children's events),  
Museum 01473 433551

[www.ipswich.gov.uk](http://www.ipswich.gov.uk) (click on 'museums')

Did you know the Kite originated in China 2,800 years ago? Why not come and have a go at making your own kite. Take inspiration from the collection and design and make an amazing kite to fly in your local park.

Make your own kite, £1.50 per person

Bookable activity, sessions at 11am, 12pm, 1pm, 2.30pm and 3.30pm

### **27-31 Oct: Tick Tock Make a Clock@ Christchurch Mansion**

Come and have a go at designing your own clock face, inspired by the clocks in the collection. The clock faces can be entered into a competition. The entries will be on display for a limited period of time and will be judged by Bernard Mason on Saturday 1st November at 12pm.

Bookable sessions at 11am, 12pm, 1pm, 2.30pm and 3.30pm £1.50 per person

### **27 Oct - 2 Nov: Count the Clocks @ Christchurch Mansion**

See how many old clocks you can count in the Mansion and enter a prize draw to win tickets to Colchester Castle Museum. Free drop-in activity

### **27Oct - 2 Nov:Time-Machine Drama Fun @ Ipswich Museum**

This half term come and take part in a fun and imaginative journey through time and act out the historical

### **Sun 14 Sept: Christchurch Mansion - Heritage Weekend Event**

Christchurch Mansion has a day of free activities exploring the fabulous Victorian era. You can enjoy some traditional Victorian games on the lawn in front of the house which will be great fun for all of the family. There will be Victorian washing in the garden with your chance to use a dolly, copper, and carpet beater. How would you have done being a Victorian maid and washing the clothes for all of the people in the Mansion? Come and find out! You can also enjoy demonstrations of some traditional Victorian crafts including crochet and tatting and lots more.

Free Drop-in 10am – 4pm

### **Sat 4 Oct: Chinese Kite Making @ Gallery 3, Town Hall Galleries**

characters along the way. people you will become. There will be props and costume to help you get into your role. £1.50 per child. Sessions at 11am, 12pm, 1pm for ages 4/5yrs - 7/8 yrs  
Sessions at 2.30pm and 3.30pm for ages 7/8yrs - 11/12yrs

### **28 Oct -1 Nov: The Tardis Trail @ Ipswich Museum**

Come along to Ipswich Museum and explore different places and times in history. What time have you travelled back to? Complete the Tardis Trail and enter a free competition to win a fabulous museum goody bag. Free Activity

### **Sat 1 Nov: Fabulous Fireworks @ Gallery 3**

As well as being treated to a chocolate biscuit, children will also be able to make their own rocket bookmark to take home. The Chinese invented Gunpowder back in the 7th century AD and without it there would be no reason to remember the 5th November.

### **Sat 1 Nov: Meet Bernard Mason @ Christchurch Mansion**

Mr Mason restored Tymperleys Clock Museum in the 1950's and left his fabulous collection to Colchester. You can meet our costumed storyteller who will tell you some fascinating stories about Bernard Mason and the types of clocks on display at the Mansion, as well as judging our own clock competition.  
Stories at 11am and 12.30pm  
Free activity, suitable for all the family.

### **Sat 6 Dec: China at Christmas @ Gallery 3, Town Hall Galleries**

Come and find out if and how the Chinese celebrate Christmas. Take part in some fun drop-in activities including making your own Tree of Light decorations and lanterns to take home and brighten up the dark winter nights.  
Free entrance to Gallery 3, 10am-5pm  
Drop-in activities, 10-4pm

### **Sat 13 Dec: The 12 Days of Christmas @ Ipswich Museum**

Follow the story of this famous carol around the museum to discover some fun and interactive activities and challenges.  
Free drop-in activities 10am-4pm.  
Storytelling sessions at 11am, 12pm, 1pm, 2.30pm and 3.30pm

### **Sun 14 Dec: A Tudor Christmas @ Christchurch Mansion**

This Christmas come and get into the festive spirit at Christchurch Mansion. Come and discover what this time of year was like for the first family to live here and how they would have celebrated. Talk to our friendly costumed characters who will show you an Elizabethan Christmas banquet. Listen to traditional carols and make your own decorations including clove pomanders. Don't forget to visit Father Christmas in his grotto too.  
Free drop-in activities 10am-4pm  
Father Christmas, £2 per child 10am-4pm  
Make your own pomander, £1 per person

## Visual Arts Ipswich

Open: Tue-Sat 10 am- 5 pm

Information from:

visualarts@ipswich.gov.uk

www.townhallgalleries.org.uk

Telephone: 01473 432863

### **GALLERY 1, TOWN HALL**

13 Sept - 1 Nov: 1118 miles

Karol Radziszewski, Wojciech Doroszuk, Iwona Zajac, Agata Borowa and Twozywo

Curated by Katarzyna Szydłowska and Konrad Schiller

This exhibition of work by emerging Polish artists focuses on communication and the issues it can bring for Polish immigrants living in the UK. The importance of good communication and personal relationships is emphasised and feelings of being "other" are explored.

### **GALLERY 2, TOWN HALL**

2 - 27 Sept : Mary-Anne Morrison  
Textiles

### **Wrapping the Corn Exchange, Ipswich**

Ipswich Borough Council has commissioned artist Les Bicknell to transform one of Ipswich's best known buildings during renovation work.

Les's striking but simple concept of a landscape dominated by cornfields and Suffolk sky will shroud the Corn Exchange until Spring 2009 during a

£1 million refurbishment project.

Les Bicknell writes: "People who visit the town centre will be transported to a very rural space. It's a celebration of the experience of travelling through rural areas and vast expanses of land. It's a reminder of what we are surrounded by, what it means to live in Suffolk for many people"

To coincide with the project a corresponding display of work titled - threads: mapped - the other stuff that's going on while wrapping the corn exchange will be shown at the Town Hall Galleries from 6th August. It will attempt to illustrate the numerous connections within an artist's activity; what they are looking at, thinking about and working on while one part of what they do is made public.

Les has exhibited widely; most recently at The National Museum of Scotland, Edinburgh, The Crafts Council Gallery, London, The Chicago Centre for Book and Paper and St James Cavalier, Centre for Creativity, Valletta Malta.

Bicknell's work has been acquired by numerous private and public collections nationally and internationally including The Tate Gallery, The Victoria and Albert Museum, London, The Rijksmuseum, Den Haag, and The Museum of Modern Art, New York. For further information contact: Rebecca Weaver  
rebecca.weaver@ipswich.gov.uk

01473 432860

## Other Events

### Age Concern Suffolk Charity Event

The Countess of Euston (President of Age Concern Suffolk) will be hosting “**An Evening at The Mansion**” on Friday 19 September from 6.00 pm to 9.00 pm. There will be guided tours throughout the evening and a Charity Auction.

The Special Guest will be Dr JOHN BLATCHLY (well known Suffolk historian and writer) who will tell fascinating stories about local characters, places and happenings.

Tickets: £25, including buffet and complimentary drink

*For Tickets and further details - contact*

*Maggie James, Age Concern Suffolk,  
14 Hillview Business Park,  
Old Ipswich Road, Claydon,  
Ipswich IP6 OAJ  
Tel: 01473 298688*

*Email:*

*maggie.james@ageconcernsuffolk.org.uk*

### Art Lectures with Hugh Belsey

For the last three years the art historian Hugh Belsey has offered a series of lectures at the Ipswich Institute. He has talked about many aspects of British art and collecting. During Autumn 2008/ Spring 2009 he is offering eleven talks about painting in The Netherlands during the 17<sup>th</sup> century.

Banishing Spain from the Northern Provinces, the Dutch people became

successful merchants and traders, they developed a fearsome naval force and began to look at their surroundings with increasing intensity, wit and passion. Artists specialised in landscape, in still-life, in domestic scenes and portraiture, townscapes and church interiors. The content of some pictures was religious, in others the subject had moral overtones.

There were perhaps more artists working in Holland between 1620 and 1680 than anywhere else before or since and the variety was only united by the unequalled skill of offering *A Mirror to Nature*. Many will know the geniuses of the period — Rembrandt, Vermeer and Hals — but there is much else to be enjoyed and understood in work by ter Borch, Metsu, Jacob van Ruisdael, Pieter de Hooch and Jan Steen.

Hugh Belsey is an experienced lecturer who has spoken to audiences in this country and abroad. He reviews books and exhibitions and writes as well as being a lecturer. In 2004 he was awarded an MBE for his services to museums.

For further information about *A Mirror to Nature I* (17, 24 Nov and 1, 8, 15 Dec) and *A Mirror to Nature II* (2, 9, 16 Feb and 2, 9, 16 March) pick up a leaflet from the Tourist Information Office or the Ipswich Institute from the beginning of October. Better still contact Hugh Belsey by sending an email to [h.g.belsey@talk21.com](mailto:h.g.belsey@talk21.com) or writing to him at 7 Rae's Yard, Bury St Edmunds, Suffolk IP33 3EY or telephoning 01284 703505.

## FOIM COUNCIL 2008-2009

**President:** The Honourable Gay Strutt

**Vice-President:** Alan Swerdlow

**Chairman:** Paul Bruce, The Old White House, Culpho, Ipswich IP6 9DH, 01473 738265

**Vice-Chairman:** Mary Southwood

**Secretary:** Kathleen Daniel, 37 Parkwood, 11 Henley Road, Ipswich IPI 3SE,  
01473 225429

**Treasurer:** Roy Suttle, 59 Bennett Road, Ipswich IP1 5HX , 01473 410542

**Membership & Social Secretary:** Barbara Cole, 11 Booth Lane, Kesgrave,  
Ipswich IP5 2XL, 01473 630584

**Newsletter Editor:** Mary Halliwell, 31 Queens Road, Felixstowe IP11 7QU  
01394 279753, e-mail: [j.halliwell165@btinternet.com](mailto:j.halliwell165@btinternet.com)

**Guides Co-ordinator:** Siobhan Steel

**Other Council Members:** David Kergon, Jeremy Latham.

**IAA Representative:** Ferial Evans

**Ipswich Society Representative:** Ken Wilson

**Ex-officio Member:** Peter Berridge, Colchester and Ipswich Museums Manager

Any correspondence, except where indicated, should be sent to:

FOIM, c/o Ipswich Museum, High Street, IPSWICH IP1 3QH

Registered Charity Number: 275527

---

## FOIM CORPORATE MEMBERS

AXA Insurance plc.

Barnes Construction

Birketts

Dummett Copp

Fred Olsen Ltd

East of England Co-operative Society

Ipswich Building Society

The Linden School of Music

Notcutts Nurseries Ltd

Ryan Insurance Group

St Judes Brewery

Suffolk New College

Titchmarsh & Goodwin

Watson & Hillhouse Ltd

Newsletter Published by The Friends of the Ipswich Museums