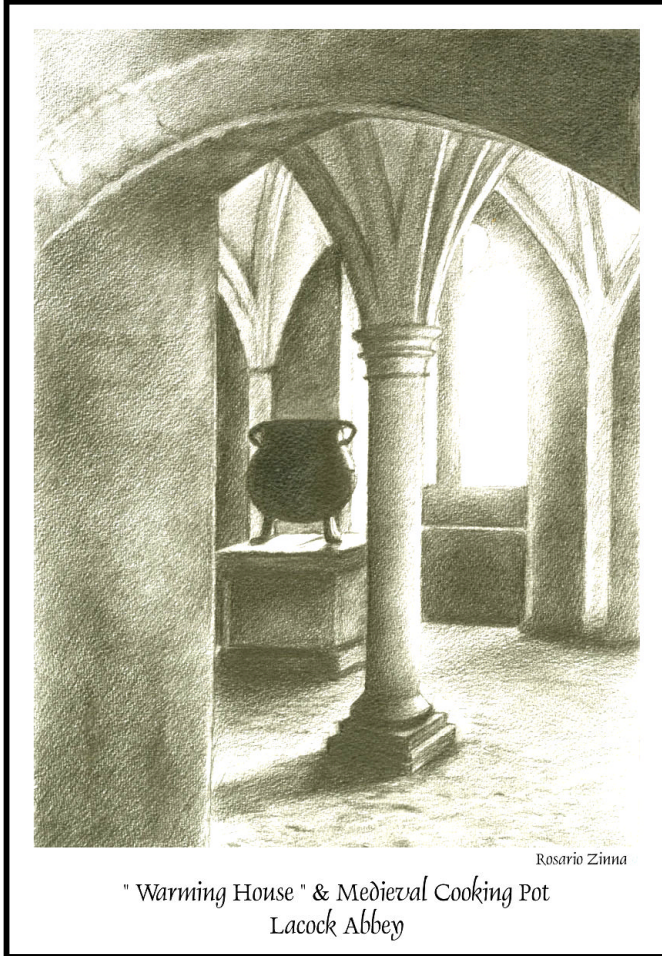


Summer 2010



**Ipswich Museums**

# **Friends Newsletter**



The **Friends of the Ipswich Museums Newsletter** is published quarterly and distributed free to all members. The FOIM was set up in 1934 to support the work and development of the Ipswich Museums: Ipswich Museum in the High Street (including Gallery 3 at the Town Hall), Christchurch Mansion and the Wolsey Gallery in Christchurch Park. Since April 2007 the Ipswich Museums have been managed as part of the Colchester and Ipswich Museum Service.

Friends continue to provide financial support to the Ipswich Museums as well as acting as volunteers. The Friends run outings, lectures and other events for their members.

The Friends provide guided tours of both the Mansion and the Museum, including free taster tours of the Mansion on Wednesdays. Tours for groups can be booked by contacting the Mansion (01473 433554).

FOIM is a member of the British Association of Friends of Museums and Ipswich Arts Association.

Contributions to the Autumn 2010 Newsletter should be sent to the editor by 1 August.

## Contents

Editor's Notes	3
IAA Discounts	3
Chairman's Message	4
Peter Berridge's Column	5
Annual General Meeting Report	7
Friends Information	9
Cardiff Visit Report	11
A Monumental Beginning	13
Saatchi in Ipswich	15
Chen Hong -The Fish King	16
From the Documentation Officer	16
Recent Acquisitions	17
A Wheat Bug	18
Nigerian Curators Visit	19
Staff News	20
Education & Learning	21
Colchester News in Brief	23
FOIM Council 2009 –2010	24
Corporate Members	24
Advertisements	9,10,14,22,23

**Cover Illustration:** A pencil drawing of Lacock Abbey by Rosario Zinna (the Friends visited Lacock during their recent visit to Cardiff).

Please visit our website at [www.foim.org.uk](http://www.foim.org.uk). Jerry Latham would welcome your comments. We have already started to use the website to advertise events which are notified too late to be printed in the Newsletter.

## Editor's Notes

I would like to start by thanking Rosario Zinna for providing me with a drawing for the front cover. He made this drawing from a photograph he took while on his way to Cardiff with the Friends.

My thanks also to Laura Hardisty who provided me with all the information about the staff and their activities. As an experiment I have used a smaller font size for the museum information. I have thus been able to get more information in while hopefully avoiding the risk of a delivery surcharge by the Post Office. Please let me know if you find the font too small.

I have taken the opportunity to include a report of the recent AGM in this issue, for the benefit of those who did not go to the

meeting.

Alan Swerdlow reminds me that in 2007 FOIM were at Pallant House in Chichester when they were short listed for the Art Fund Award for the best Museum. We were invited by the director Stefan Van Raay to vote for them - they won that year! The short list for the 2010 prize includes the reopened Herbert Museum in Coventry which some of us dropped in to on our way to Birmingham in 2000; Blists Mill, part of Ironbridge Gorge museums, which we visited on our way to North Wales in 2008; and the Ashmolean Museum in Oxford which we will visit in September. The winner will be announced on 30 June 2010.

Mary Halliwell

---

## Ipswich Arts Association Discounts

FOIM is a subscribing member of the Ipswich Arts Association and this entitles its individual members to discounts on certain events promoted by Ipswich Borough Council.

Paid-up members of societies affiliated to Ipswich Arts Association may receive special offers on some events promoted by Ipswich Borough Council.

These events will include the Ipswich Civic Concerts, and certain ballet and opera events at the Ipswich Regent Theatre. The concessions do not extend to other promoted events

To obtain these concessions, please produce a current membership card confirming your affiliation to FOIM when booking.

## Chairman's Message

Dear Friends

It was good to see so many Friends at the AGM. We managed to get through our business efficiently and were then able to sit back and enjoy a talk from Jo Rooks from the Museum of East Anglian Life. It was a new focus on the work of the museum, and made many of us think that we must revisit our neighbours at Stowmarket very soon.

At the AGM I made another appeal for a volunteer to be Treasurer as our present Treasurer will be moving on. We passed an amendment to the Constitution allowing us to have more Ordinary Members on the Friends' Council. If you would like to join the Council we would be very pleased to hear from you and explain some ways in which you could help, so please do contact me or any member of the Council to find out more. We also passed an amendment to increase the reserves of our organisation so that we can have a sufficient sum to hand when the Museum Service comes to us for help with a large purchase. Both these amendments were necessary because our organisation is successful; this is thanks to all the Friends.

Just after the AGM Alan Swerdlow

led a group of Friends on a trip to Cardiff, where they enjoyed excellent weather and were not deterred by a volcanic ash cloud! A full report on the trip will be found on page 11. We are now looking forward to our overnight trip to Oxford in September.

By now you will have had the opportunity to attend the lunchtime talks on Margaret Catchpole, Benton End and The History of the Ipswich Art School and will be given by our own Paul Bruce. This subject is particularly appropriate at this time when we are all excited at the prospect of exhibitions in the reopened Art School soon. Paul is at present involved in publishing a book on this subject, the proceeds from which will be given to the fundraising effort needed to ensure that Ipswich can benefit from the Art School facility.

Our Membership Secretary, Barbara Cole, thought it was too long between Christmas parties for Friends to wait for a get-together, so we are going to have a Strawberries and Cream evening on Friday 16 July in the Wolsey Gallery—see page 10. It promises to be a really enjoyable evening.

Best Wishes, Mary Southwood

Mary can be contacted via our website ([www.foim.org.uk](http://www.foim.org.uk)) or c/o Ipswich Museum, High Street, Ipswich IP1 3QH

## Peter Berridge's Column

### **The Art School Building**

I expect you have by now all learnt about the very exciting news that Ipswich Borough Council have entered into a two year agreement with Suffolk New College to have possession of the former Ipswich Art School building next door to Ipswich Museum. This is a once in a life-time opportunity to create a major cultural venue in Ipswich, that will become a regional and national tourist attraction and a source of pride and inspiration for the community. Initially the focus will be on the Art School but this is just the catalyst for a much larger project involving the overall development of Ipswich Museum and the Art School and fully incorporating them into a single venue.

The first step will be for the museum service to mount a series of modern and contemporary art exhibitions in the building starting with a series of artworks borrowed from the collection of Charles Saatchi one of the world's leading collectors of contemporary art. This first exhibition will fully open to the public on Saturday July 10<sup>th</sup>. These exhibitions and a range of other events will form part of a fund raising campaign to acquire the necessary money to not only

purchase the building but also to establish an endowment fund to help cover additional running costs and an ongoing artistic and educational programme.

While running the fundraising campaign around the Art School we will also be further developing the ideas concerning the larger development. This will be a major capital scheme (c. £8-10 million) to allow the whole enlarged footprint to be reconnected and redisplayed. I have previously described most of the key themes in an earlier column but it is perhaps worth repeating them. Within the Art School element will be a major series of gallery spaces to display 20<sup>th</sup> century and contemporary art. These galleries will focus on: Contemporary art of national importance; the strengths of the Ipswich Art collection in the works by artists associated with the 'Benton End Group' and the Ipswich Art School; and providing a venue for artists to work through residencies and studio spaces for students.

### **The High Street Museum**

Within the museum the key themes will be:

**The Cabinet of Curiosities:** The Victorian Natural History Gallery,

one of the treasures and most popular spaces of the current museum will be extended.

**The Birth of Britain:** The evolution of the landscape over millions of years and the beginning of human occupation. This will reflect the importance of the museum collections and key figures associated with it.

**The Origin of England:** Reflecting the importance of Ipswich during the foundation of Saxon England and the wealth of material that has come from excavations in the town and surrounding areas.

**Across the World:** Reflecting the wealth of the world collections of Ipswich and the diversity of its modern community.

**Flights of Fancy:** The world of birds using the nationally important Ogilvie Bird collection but incorporating some radically new ways of interpretation.

**The Story of Ipswich:** Telling the story of the development of Ipswich from medieval to modern times.

In order to help us achieve our ambitions the help of the Friends will be critical and the Friends Council are already firmly supporting the project. In particular what we need quickly are volunteers to help us in a number of areas and in particular in volunteering to help staff the Art School building. While we will

have a paid member of staff within the building we also need a large body of voluntary invigilators with the idea that there would be one in every gallery space. A number of people have already put their names forward but we need a lot more and so if you are interested in giving some time, even if it is only a couple of hours a week, all offers will be greatly appreciated. Marlene Moyse is currently collating offers of voluntary help so if you are interested in helping please contact her (details are given on page 15).

If you would also like to keep in touch with the Art School project regular updates will be provided via the Ipswich Borough Council website. Also any of you who are familiar with Facebook or Twitter (which I have to admit I still am not) can also keep in touch that way.

I have used the word 'exciting' quite a lot and this is not just a matter of spin as it really is the beginning of the next big step forward for museums and culture in Ipswich. A range of things will be happening over the next few years but just to remind you that in the summer the new Egyptian Gallery will be opening in Ipswich Museum. This is a project that is already benefitting from the support of the Friends through a significant funding contribution. This new gallery will also be a very important project in terms of the longer term

development as it will help demonstrate what can be achieved and will build up the confidence in funding bodies such as the Heritage Lottery Fund and make them more amenable to our future funding bids. Work will also be shortly starting on replacing the roof of the High Street Exhibition Gallery which also forms part of the Ipswich Museum complex. While this space will eventually become a public gallery, in the interim it will provide an invaluable work space to enable us to work on the collections in preparation for the larger redevelopment.

### **The Mansion**

It perhaps important to point out that Christchurch Mansion has not been forgotten in all of this. Ipswich Borough Council, having already spent major sums, particularly to the roof, will over the next few years be continuing to invest in the

building and plans should hopefully soon be ready for a new heating scheme. Also we continue with our plans to redisplay the Wolsey Art Gallery. Initially it had been intended to try and achieve this by September but with everything else going on it is clearly sensible to delay this by a few months. This will also allow us to make a grant application for some additional funds and so allow us to achieve something more ambitious. The intention will be to more firmly establish the gallery, within Christchurch Mansion, as the regional focal point to view works by John Constable.

So a lot is happening and thanks to all of you for your support of the museum service and all the help I know that we will be receiving over the coming months and years.

**Peter Berridge**  
**Museum Service Manager**

---

## **Annual General Meeting Report**

*The AGM was held at Christchurch Mansion on Wednesday 14 April 2010*

**Present:** The President, 42 members of the Friends and Marlene Moyes from the museum service.

Apologies for absence were received from 14 members and from Peter Berridge and Jayne Austin from the museum service.

**Chairman's Report:** The Chairman reviewed the activities of the past

year. The Friends' programme of day trips and group visits had continued with their usual success and the 2010 series of lunchtime lectures had just been launched at a new venue. The website had increased its scope and attracted more visits. A new guides co-ordinator had recently been appointed. This aspect of our

activities had grown considerably during the past twelve months, with a marked increase in interest and income, as had Corporate Membership, also under new stewardship. The Friends had funded the conservation of a complete set of Roman horse harness fittings, found at Holbrook, and had made a major contribution to the refurbishment of the Museum's Egyptian Gallery. They had also financed the purchase of four works by John Western. The appearance on the property market of the old Ipswich Art School, newly rented to the Museum Service for a period of two years at a nominal rent, was a unique opportunity to buy the building outright and develop the site as a whole. This could transform the Museum's operations and would require a major fund-raising effort. As a first step the Friends were funding the initial print run of a History of the Art School, being prepared by Paul Bruce and others connected with the School. The Chairman appealed for a volunteer for the post of Treasurer, as David Kergon would be spending more time abroad and a replacement for him was urgently needed. She warmly thanked the members of the Council, whose work load was growing all the time; the consequent need for an enlargement of the Council would be dealt with in a later item.

**Report and Accounts:** Copies of the accounts were available at the meeting and were adopted by the meeting. The Treasurer commented that our present Reserve Fund policy did not take into account the need to hold larger sums in reserve and a constitutional amendment was therefore being proposed. Ken Wilson had kindly agreed to continue to act as our Independent Examiner.

**Report of the Membership Secretary:** Barbara Cole reported on the current state of membership.

**Report of Colchester & Ipswich Museums Service:** Marlene Moyes presented a report on behalf of the Museum Service.

**President's Address:** Gay Strutt thanked the Officers and Council for their work over the past year, and emphasised the need to increase and widen our membership in view of the possibilities which lay ahead of the Museum Service in Ipswich. It was a time of unusual opportunity which would call for even greater support from the Friends.

**Election of Officers and Members of the Council:**

The following were elected:

**Officers:**

Chairman — Mary Southwood  
Vice-Chairman — Jeremy Latham  
Treasurer — David Kergon



Secretary — Kathleen Daniel

**Council Members:**

Barbara Cole

Stuart Curtis

Mary Halliwell

Joan Munns

**Amendments to the Constitution:**

**Reserves Policy:** It was agreed that the sentence 'The Trustees consider that the level of reserves should be in the region of two years' income' should be amended to read 'The Trustees consider that the level of reserves should be in the region of two to five times annual income'.

**Council Membership:** The constitution states that "The Council shall consist of the Officers and a maximum of six ordinary members'. It was agreed that this should be

amended to 'The Council shall consist of the Officers and a maximum of nine ordinary members'.

**Any Other Business:** Paul Bruce asked for comments on the new series of lunchtime lectures. Members had found the new venue pleasant but suggested that a map of its location should be included on the leaflet.

A member complimented the Mansion on the improvement in its catering service and there were also congratulations on the establishment and operation of the Friends' website.

*After the meeting Jo Rooks gave an engaging and inspiring talk about her work at the Museum of East Anglian Life in Stowmarket.*

---

## Friends Information

---

### Have you Changed your Standing Order?

It is three years since subscriptions were raised to £12 for individual members and £15 for joint/family members. I still have problems with members who have not updated their standing orders. I would be very grateful if the 32 members who have not already done so could update their standing orders as soon as possible.

I am sending a reminder letter with this newsletter to those who have not renewed their subscription for 2010. I look forward to hearing from you.

Since the last AGM we have had 18 new members and 3 corporate



members, bringing our total membership to 363.

We welcome 4 new members:  
Gay Strutt, Mr R Whitehead  
Ms S Payne, Mrs G Williams

Does anyone know where Mrs E Taylor, who lived at 31 Fonnereau Road, now lives? She is still paying her subscription but is receiving no communications from us. If anyone can help, my contact details are on the back of this newsletter.

Donations in the two chests at Christchurch mansion and the High Street Museum amounted to £4,618 since the last AGM.

**Barbara Cole**  
**Membership Secretary**

---

## Visit to Oxford

Alan Swerdlow has arranged a trip to Oxford on 9 -10 September 2010, visiting the recently refurbished Ashmolean Museum and the Bodleian Library, with spare time to visit other Museums of your own choice. The overnight stop will be at the Barcelo Oxford Hotel. The visit is now fully booked, with a waiting list.

---

## A Summer Social in July

There will be a Strawberries and Cream evening at the Mansion on July 16 with wine. There will be a short talk about Mendelsham Chairs given by Jeremy Lain from

*Treeincarnation*. A booking form is being distributed with this newsletter.

---

## Mansion Guides

The Mansion guides continue to be busy. After a successful winter season, we are now offering four free taster tours of the Mansion between 11.00am and 2.00pm every Wednesday. There is also an encouraging demand for general tours of the house. We are planning to recruit some additional guides in August to enhance the team for next year. So, please if anyone is interested, or knows of someone who may be, then please do contact me. Training will take place during the autumn. My thanks to everyone on the guiding team.

**Joan Munns, Guides Co-ordinator**



**BELVEDERE  
POLISHERS**

Does your table/furniture have cup marks and other unsightly signs of wear?

**Call Belvedere today and ask about their FREE service.**

- Competitive prices
- Insurance work
- Furniture repairs
- Collection and delivery
- Furniture designers and manufacturers

**Guarantee**  
If for any reason you are not happy with the job we have done then we will do it again free of charge for you and give you half the cost back.

**Tel: 01473 807719**  
11 Dove Street, Ipswich IP4 1NG  
[www.belvederereproductions.co.uk](http://www.belvederereproductions.co.uk)

---

## Friends Visit to Cardiff, 18-22 April 2010

**Sunday:** Our outward journey to Cardiff was broken by a long stop at Lacock, a very pretty village, with many houses of white stone, which many of our party quickly recognised as the scene of Mrs Gaskell's novel Cranford and other BBC costume dramas.

The attractions include the Abbey and the Fox-Talbot Museum, where Fox-Talbot's pioneering work in photography is brilliantly demonstrated. The Abbey was founded by the Countess of Salisbury in 1232 AD for a group of nuns and continued until the Dissolution of the Monasteries. The ground floor is just a shell which shows the ground plan of the nunnery. But the upper floors remain furnished as they were when the last owner gave the property to the National Trust.

Our journey ended at the Holiday Inn, Cardiff (opposite the Castle). After dinner we were addressed by Professor T M Hayes, who spoke of the seven National Museums of Wales, entrance to all of which is free.

**Monday:** Our first day began with a short coach tour around the centre of Cardiff, where we all admired the public buildings of the city elegantly built in Bath stone and set in parks and gardens. Next we toured the

dock area which has been redeveloped, as the port has much less trade than before.

We came back to visit the Castle and its grounds. On the site of the old Roman camp and mediaeval castle the 3rd Marquis of Bute had a Victorian Castle erected as his residence. With William Burgess his architect and friend of Oxford University days, the Marquis used every variety of style and decoration in furnishing the interior. Cardiff Castle is an outstanding example of the achievements of a gifted architect with a very rich patron.



By Cardiff Castle

In the afternoon the party visited St Fagan's National History Museum spread out in the open air on the outskirts of Cardiff. The church of St Teilo from Portaddulais is the jewel of the museum. About 1979 the church was vacated, the lead

was stolen from the roof and the church fell into disrepair. But some mediaeval frescoes were revealed! So the church was re-erected at St Fagan and the late (ca 1520) mediaeval frescoes of our Lord's Passion and Crucifixion have been wonderfully restored. At the hotel in the evening the Cardiff Male Voice Choir entertained us.

**Tuesday:** The Welsh National Assembly Building is very modern and designed to be ecofriendly. It has glass walls and slate floors and stairs, is heated geothermally and rain is collected from the roof for sanitary use. Cedar from the West Coast of North America is the timber of choice for low maintenance. Internally the members of the Assembly are seated in a circle. The public is encouraged to attend meetings by arrangement and sit in a gallery above the chamber.

The National Botanic Museum of Wales lies beyond Swansea and covers 500 acres of open country. The most notable feature is the glasshouse designed by Norman Foster. Its roof is unsupported and composed of 784 glass plates, each of which is numbered. The building itself is tilted seven degrees to maximise solar radiation. The extensive collection of plants in the glasshouse is drawn from countries with a Mediterranean climate. Elsewhere

there are collections arranged in groups for study, and in particular there is an interesting exhibition of medicinal plants of all ages and from all parts of the world.

**Wednesday:** On our last full day Sian Edwards welcomed us to the National Museum of Wales to see



the departments of Art and Archaeology. The Museum holds a wonderful collection of Impressionist paintings, half of which were on loan to a museum in New York. The collection was formed by two wealthy sister Margaret and Gwendoline Davies.

**Thursday:** On our return journey we made an early detour to Llandaff Cathedral, which was heavily bombed during the War. The Cathedral has now been repaired and Epstein's statue of "Christ in Majesty" now dominates the Nave.

We broke our journey for lunch at Basildon Park near Reading.

Basildon Park Mansion was built in the late 18th Century by a rich merchant who made his fortune in India. The building is in an extensive park and is built in classical style. It has suffered from vicissitudes of dilapidation and restoration. Most recently the last owner, who is very old, gave the property to the National Trust who are now engaged in restoring and refurbishing the buildings to their pristine elegance.

So we returned to Ipswich. The entire party joined together to thank Alan Swerdlow for organising a most interesting and enjoyable trip once more. It was wonderful that Selwyn again drove our coach most skilfully and comfortably and was such agreeable company. Thanks too to Derek Cole who seized the opportunity to play any available piano for our pleasure!

**Andrew Gunn**

---

## A Monumental Beginning

*Caroline McDonald reports progress on the new Egypt Gallery*

Just as the pyramids were not built by slave labour you will be pleased to hear that neither will the new Egypt gallery due to open this summer at the High Street! Elliston Steady and Hawes (builders) Ltd started work on the new gallery on Monday 19 April and will finish by 2 July. After that time, just as in Ancient Egypt, our mural painters will be on site whilst our own team adds the finishing touches. It is a hugely exciting time as months of creativity start to become a solid reality.

The project will have been delivered within 15 months, an outstanding turn around time for a permanent gallery in any museum's books. The gallery will act as an inspiration point for the future redevelopment of the museum so we hope that the allure of Ancient

Egypt continues to capture public imagination as it has done since Howard Carter cracked open Tutankhamen's tomb to reveal the wonders within.

One thing Carter did not have to contend with in his tomb project was a half ton Roman kiln. The Wattisfield kiln which formed part of the Roman gallery Potter's display was discovered by Basil Brown a couple of years before the excitement of Sutton Hoo and transported intact to the museum in the 1930's. It sat in the gallery for some decades and the museum changed around it leaving us with the tricky problem that it could not get out the way it had come in! Unless we could remove the kiln there was going to be no new Egypt Gallery at all.



Kiln coming over the Balcony

Cliveden Conservation moved the kiln centimetre by painstaking centimetre with the help of a special lifting frame and the skill of two specialised technicians. Over the course of four days it made its way out of the gallery and over the balcony, with the giraffe and rhino getting a front row view. It made it



Rosie in her dust sheet

to the front door and with literally millimetres to spare, was lifted out and onto a truck to be transported to our Heckworth Close store.

The kiln is hugely important as it is a 'type' that other kilns are compared against and is one of the few complete Roman kilns in the country. It now remains in one piece and available for study for future generations.

As evidence of one great civilisation leaves a whole new civilised crowd will be taking residence in 2010. I urge you to literally watch this space!

**Caroline McDonald**  
**Curator of Archaeology**

## THE LINDEN SCHOOL OF MUSIC

GERALDINE & FRIENDS SINGING GROUP

PIANOFORTE

SINGING

CLASSICAL GUITAR

PRIVATE TUITION

and

GROUP SINGING

Specialist in teaching Adults and Young Singers  
Young Pianists considered from 5 years of age

Mrs Geraldine Patey

36 High Hall Close

Trimley St. Martin

Felixstowe

Suffolk

IP11 0TJ

Telephone: 01394 275125

Member of the Incorporated Society of Musicians

## Saatchi is coming to Ipswich!

*An exciting new arts gallery is opening in Ipswich.*



**Ryan the Bed View 1** by Will Ryan

Ipswich Art School is re-opening as a gallery space on 9 July 2010 with a 'first for Ipswich' exhibition from the world renowned Saatchi Collection which has never exhibited outside of London!

This 6 month exhibition gives unique access to pieces of work from seven international artists:

Jon Pylpchuk, Matthew Monahan, Berlinde de Bruyckere, Thomas Houseago, Alexandra Bircken, Andy Yoder and Will Ryman.

The gallery provides a new venue that aims to bring contemporary art to the widest audience possible. This exhibition will mark the re-opening of the Ipswich Art School building next to the Ipswich Museum, providing a venue in which to experience world-class exhibitions, bringing contemporary

art out of London and into the East of England.

This exhibition comprises a mixture of multimedia pieces from small to very large scale that challenge their audience and stimulate visitors to explore, enjoy and experience the varied works on display.

Ipswich Art School is right next to Ipswich Museum, High Street.

Opening hours will be Tues – Sat 11am – 3pm, FREE admission

### **Be part of ART at Ipswich Museum!**

Ipswich Art School is rejoining Ipswich Museum this summer as an exciting new art exhibition space. We are seeking enthusiastic volunteers to help our team and join us in welcoming visitors to the galleries.

**Are you...**

- ❖ Interested in helping visitors whilst surrounded by art?
- ❖ Willing to give a small amount of time each week?

No experience is necessary and training is given. The role requires volunteers to be on the galleries and serve as hosts, greeting and assisting visitors in their assigned areas. There may also be occasional opportunities to assist with activities and events.

For more information or to offer your time, please contact Marlene Moyes on 01473 433690



**RENAISSANCE  
EAST OF ENGLAND**



---

## Chen Hong 'The Fish King'

As part of the Eastern Exchange Stories of the World project Chen Hong, a traditional Chinese artist from Beijing, was our artist in residence during April. Stories of the World is one of the major projects of the London 2012 Cultural Olympiad – exploring Chinese culture through new ways of engaging with the collections and offering different perspectives and experiences.



Regarded as a 'cultural treasure' in his homeland, Mr Chen is an expert painter and calligrapher, particularly famous for his images of fish.

During his time with Colchester and Ipswich Museum Service, Chen Hong actively took part in a programme of

events including painting demonstrations, workshops and master classes. These activities engaged visitors of all ages and took place in both Ipswich and Colchester, culminating with an exhibition at University Campus Suffolk (UCS) Waterfront Building. It has been a real coup to have such a significant Chinese artist at the museum. His presence has built on the links already made between the museum service and China which will continue to grow.

Mr Chen spent May in Norwich, the third leg of his tour of the East of England.

**Tom Hodgson**  
**Community History Manager**

---

## From our Documentation Officer

### Marble bust returns to owners

Many of you will recognise the image of the marble bust of Elizabeth Dyce Duckworth which has been on display in the toy room at Christchurch Mansion for many years. The sculpture, by Sir Alfred Gilbert who created the Statue of Eros in Piccadilly Circus, may have been a memorial bust as we know that Elizabeth the daughter of Sir Dyce Duckworth was born on 14 September 1871 and died on 20 March 1884.

The current owners of this marble bust, which has been on loan to us since 1953, do not wish to renew the loan





agreement and the marble bust will be placed in the auction at Sotheby's on 2 June. We are obviously very sad to see the marble bust leave our care after such a long time.

### **Costume acquisitions**

Another childhood related item has been recently accepted as a donation. This is a white dress with a band of blue smocking across the chest just below the front yoke. It has at the back a 'CC 41' fabric label denoting it was an item of utility clothing made after 1941.

A very stylish two piece bathing costume which was owned and worn by a lady from Felixstowe has also been donated. It is in very good condition and has a halter-necked top with a ruched band at the back. The 'bottoms' have a flat panel at the front but the sides and back are again ruched like the band on the top.

### **Assisting Swaffham**

Many of my colleagues are involved

with the Museums Libraries Archives (MLA) SHARE scheme where we visit other often independent museums when requested and give support and advice. As part of this scheme I have recently assisted Swaffham Museum with a documentation review. It was my first visit to the town; previously I had only known about the town through the BBC television programme 'Kingdom' which was partly filmed there.

Swaffham Museum is volunteer run and includes a Tourist Information Centre within the Georgian building, formerly the home of the Morse family of Brewers. Howard Carter the eminent Egyptologist had connections with the town and there is an excellent display marking this fact with objects loaned by The British Museum. The museum is well worth a visit if you are in the area and opening times can be found on the website <http://www.swaffhammuseum.co.uk>

**Joan Lyall**  
**Documentation Officer**

---

## **Recent Acquisitions**

Two recent acquisitions highlight the range of things which are given to the museum in Ipswich. The first is a Swan mussel shell found at Holywells Park, Ipswich during dredging operations. The swan mussel (*Anodonta cygnea*) is the largest British freshwater mussel and occurs throughout most of Britain. It is a common species in Suffolk and populations are found in both the Gipping and Waveney rivers. This is, however, only the second specimen

from Ipswich to be acquired by the museum service. An earlier donation in 1936 also came from Holywells Park and indicates that the swan mussel population has been there for some time.

The second is a recipe booklet issued to promote 'Cranfields Snowflake' self-raising flour. This is undated, but is almost certainly from 1953 when Cranfields greatly expanded their

business in Ipswich, electrifying their flour mill and introducing a vacuum drier, while energetically buying up bakeries throughout the region. The recipes themselves are plain and basic, but the large quantities of sugar and eggs show wartime rationing to be but a memory. The photos in the booklet

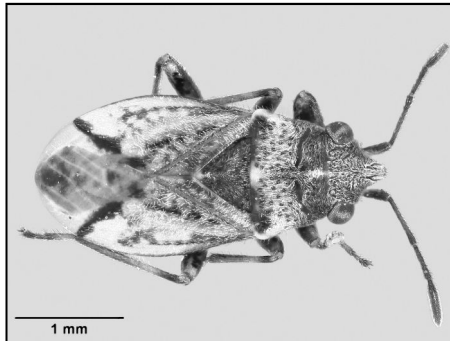
show many women at work and a reminder of just how many local businesses employed women at this period.

**Philip Wise**  
Heritage Manager

---

## A Wheat Bug from New Zealand

Nigel Cuming, an Assistant Curator of Natural History from the Museum Service discovered a wheat bug in Suffolk that originated from New Zealand. This is the first discovery of this pest in the UK.



a field of barley, though it was never seen feeding on the plants.

The Food and Environment Research Agency (**Fera**) which works with a wide range of commercial growers and Government

Nigel found large numbers of an unfamiliar species of ground bug in September 2007, whilst surveying North Warren RSPB Reserve in Suffolk. The bug has been identified as *Nysius huttoni* White (Hemiptera: Lygaeidae), more commonly known as the Wheat Bug. This New Zealand endemic is a polyphagous pest of large number of weeds and crops.

departments to deliver accurate pest and disease diagnosis for the global horticultural and agricultural industries, has released a 'Plant Pest Factsheet' on its website providing information and asking for suspected findings of the Wheat Bug to be reported to the local **Fera** Plant Health and Seeds Inspector

After his first Suffolk find in 2007, Nigel Cuming surveyed further sites along the coast in consecutive years and discovered large numbers of adults and nymphs. In July 2009 I found it at a site in Essex.

Nigel's discovery shows the positive benefit that the expertise of museum natural history staff can bring to the wider community, in this case by alerting the authorities to a potentially important new pest species.

In the UK the Wheat Bug is reported to favour habitats of sandy soil sparsely vegetated with Sheep's sorrel. In July 2009 there was a finding of the pest in

**Jerry Bowdrey,**  
Senior Curator of Natural History

## Nigerian Curators help us pull together Charles Partridge Archives

Colchester and Ipswich Museum Service and the British Museum, London are working in partnership with the National Museums and Monuments Commission in Nigeria to share information and experience.

As part of a long running programme, the British Museum supports training and dialogue with professionals within Africa (Ghana, Kenya and Nigeria). This programme helps British Museums to understand how African museums interpret their collections and how the collections from other cultures in Britain are interpreted.

As part of this project and partnership two Nigerian curators have come over to Britain on a professional skill sharing visit for four weeks, two weeks with the British Museum and two weeks with Colchester and Ipswich Museum Service. Maureen Otuko is from Port Harcourt Museum and Pamela Alabi is from Lagos Museum.

There will be a practical focus to their work while they are here. They will be helping to produce two mobile exhibitions (both the same) one to tour England and one to take home and tour Nigeria. These mobile exhibitions will be based on a photographic collection about Charles Partridge and a town called Ife.

During their two weeks with Colchester



and Ipswich Museum Service they will be working alongside museum staff to plan a re-display of part of the African permanent collection at Ipswich Museum.

**Written on behalf of David Jones,  
Curator of Human History**

### Who was Sir Charles Partridge?

Sir Charles Partridge was a major collector for Ipswich Museum. He was a member of an old Suffolk family. He was born in 1872 and educated at Ipswich and Cambridge. In 1904 he arrived as a District Commissioner at Ikot Ekpene in Nigeria. He remained in Nigeria until 1915, collecting traditional African items, including clothing, basketware, pottery and furniture. He also collected the contents of a burial hut which he presented to Ipswich. After returning to Suffolk he pursued his lifelong interest in local history and genealogy. He died in 1955 in Stowmarket.

## Staff News

---

### Our New Curatorial Assistant introduces Herself

My name is Debbie Barnes and I've recently started working as the new Curatorial Assistant for Ipswich. Prior to starting here, I was working at Hartlepool Museums as a Collections Access



Assistant. I have also worked at museums and galleries across the Yorkshire region with many different types of collections. My main areas of interest and knowledge are decorative art and social history.

Before embarking on a career in museums a few years ago, I spent twelve years working as a textile print and dye technician and tutor in higher education. In 2001, I decided to have a career change and took a year out to do a Masters course in Heritage Studies at the University of Salford. This set me on the pathway to museums work, firstly taking the rather unconventional route of working with collections in both Bolton's and Manchester's Town Hall buildings.

I am very pleased to be in Ipswich and am gradually exploring the lovely countryside and places of special interest around Suffolk. I'm looking

forward to projects I'll be involved with both at the Museum and Christchurch Mansion. I have just started working on my first two projects at Ipswich Museum. One of these is being done in partnership with the British Museum and involves fully documenting the Charles Partridge ethnographic collection of Nigerian artefacts and then re-displaying some of them in a new case (see page 19). The other project is the documentation of an archaeological archive from an Anglo-Saxon burial site at Coddtenham. As part of my job, I will also be assisting curatorial staff with their work, helping with exhibition installations, events, dealing with enquiries and whatever else comes along!

**Debbie Barnes**  
**Curatorial Assistant**

---

### The Stepping Stones Scheme

In the spring issue we reported that Ken Brooke and Baden Chaplin were working in the Visitor Services Team at the Mansion as part of the "Stepping Stones" scheme. Baden Chaplin has now successfully secured a permanent job.

The other two stepping stones posts mentioned in the Spring Issue have now been filled by Justyn Lee, in the Display Team and Ailsa Clarke, in the Marketing Team.

Justyn Lee is working in Ipswich alongside Designer Maggie Hayward. Justyn said, "I have been exposed to a



wide and diverse range of duties and experiences, ranging from taking a number of reference photographs of existing roman

image and text panels, producing informative signage, producing a scale technical elevation of gallery space to helping to dismantle existing exhibitions and contributed to the conservation of the removed artefacts. I had the opportunity to meet and spend time with internationally renowned Chinese artist Mr Chen Hong. But perhaps best of all I have met a large number of museum staff who have gone out of their way and

busy schedules to make me feel very welcome and a valued new member of the team.”

Ailsa Clarke is working in both the Colchester and Ipswich sites. She has settled into her role well and said, “Every day is something new and interesting projects are always brewing. I’ve found the museum resource centre a fascinating place to be, we’re involved with so many diverse groups and projects as part of day to day museum life. I’m picking up new skills all the time, and everyone is very supportive.”



---

## Education and Learning

---

### Clifford Road Air Raid Shelter Museum project

The Clifford Road Air Raid Shelter Museum is in the playground to Clifford Road Primary School. It opens to schools groups when booked, and to the public on certain days throughout the better-weather months, and sometimes holds special events. The museum is run by volunteers with the assistance of the head teacher, Mr Woods.

Last year we gave £1000 to this small Museum to promote their museum. This included having professional photos taken, and a new leaflet designed and printed. Last

spring I met with the volunteers who run the Museum to brainstorm ideas, share experiences, give support, and suggest contacts. The leaflet was intended to raise awareness of the workshops they offer schools and how, linked with our WWII workshop at the Museum, it offers pupils a vivid understanding of what life was like on the Home Front in Ipswich.

Since I returned from maternity leave they have contacted me to say that they now have a new leaflet that they are really pleased with. It’s wonderful to be in a position to give support to such great volunteer-led museums.

**Rachel Macfarlane**  
Learning Officer

## Museum Service gets top marks for Education Visits

Quality Badge awarded by



The Museum Service has shown itself to be at the top of the class for educational visits by being awarded a Learning Outside the Classroom Quality Badge. Awarded by the Council for Learning Outside the Classroom, the Badge combines for the first time learning and safety into one easily recognisable badge for all organisations providing learning outside the classroom experiences.

The badge was developed as part of the Learning Outside the Classroom Manifesto, a national initiative to ensure young people are given more opportunities to have these experiences as part of the curriculum.

The badge will be displayed as a signal to schools that the venue has met required standards, so teachers do not need to carry out their own risk or quality assessments.

The Education Team

## Champions delivering Campaigning in the community

'Campaign! Make a difference' is an innovative new museum project based approach to teaching active citizenship with schools, which is being rolled out across the country through the British Library. In the project students look at skills and strategies used in a historical campaign, look at modern campaigns and then, using these skills, run their own campaign on a subject they are passionate about.

The Young people will be learning Campaigning skills – speech writing, use of media, logos, writing articles, interviews, with the help of BBC Suffolk radio and East Anglian Daily Times, directly learning from working with media, museum and learning professionals to create and run their own Campaign.



For a more personal approach to all of your business & personal insurance needs

Tel: **0844 573 9390**

e-mail: [info@ryan-group.co.uk](mailto:info@ryan-group.co.uk)

Offices at 21-23 Princes Street & Crane Hall, London Road, Ipswich

[www.ryan-group.co.uk](http://www.ryan-group.co.uk)

A £2600 Museums Libraries and Archives (**MLA**) project grant has been received for the project and Colchester and Ipswich Museums Service has been selected to work as a 'Champion' for the Campaign project across the Eastern region, acting as a project advocate promoting and supporting partnership projects with museums and schools.

There have been pilot projects with local Ipswich secondary schools running in spring term 2010. We are piloting a Campaign project based on Clarkson's Abolition Campaign, of which there is a challenging exhibition on this subject in the Ipswich Museum. This work is being led by consultant Lesley Walker in partnership with the services' senior education officer, Caroline Hammer.

### Education Team

## Colchester News in Brief

### Colchester Castle Redevelopment Project

The Colchester Castle Redevelopment Project is progressing with two new staff appointed to work on the project - Loraine Donnelly, project assistant, and Anne Millman, audience development consultant.

By June the architectural design company should have been chosen from the current short-list of ten. Further investigations of the roof structure are required and English Heritage are being consulted on the Scheduled Ancient Monument and Listed Building Consents needed. Many funding options are being investigated, in addition to the Heritage Lottery Fund and EU Funding.

### The Medieval Mind Exhibition

Philip Wise, Heritage Manager reminds us that the second part of this Exhibition in the Castle starts on 17 July. This will include items from Norwich, Luton Museums, the Fitzwilliam Museum, The British Museum and Ipswich School. A Book of Hours which once belonged to Anne Withypoll, the mother of Edmund the builder of Christchurch Mansion, will be on display from Ipswich School.

### History of the Suffrage Movement

There will be a display on the suffrage movement in Colchester Library in June. If anyone has any information they think may be relevant, please contact Assistant Curator Catherine Newley on 01206 282935.

**Coes - A world of Fashion**

MENS • WOMENS • CONTEMPORARY  
CASUAL • BUSINESS • LEISURE • SPORTS  
FORMAL • CHILDRENS • SCHOOL  
WEDDING & EVENINGWEAR HIRE  
*and so much more!*



**Coes Ipswich** 20-28 Norwich Road IP1 2NH  
Open Tues - Sat 9 am - 6 pm (Closed Mon) Customer car park at rear of shop  
Tel Ipswich (01473) 256061 Fax (01473) 254531 email info@coes.co.uk  
Menswear branches also at Beccles Dovercourt Felixstowe Lowestoft & Maldon

**www.coes.co.uk**

## FOIM COUNCIL 2010-2011

**President:** Gay Strutt

**Vice-Presidents:** Paul Bruce, Alan Swerdlow

**Chairman:** Mary Southwood

**Vice-Chairman:** Jeremy Latham (Webmaster)

**Secretary:** Kathleen Daniel, 37 Parkwood, 11 Henley Road, Ipswich IPI 3SE,

☎ 01473 225429 e-mail: [kathdaniel@hotmail.co.uk](mailto:kathdaniel@hotmail.co.uk)

**Treasurer:** David Kergon

**Membership & Social Secretary:** Barbara Cole, 35 Pownall Road, Ipswich IP3 0DN

☎ 01473 287716 e-mail: [barbara38burtoncole@yahoo.co.uk](mailto:barbara38burtoncole@yahoo.co.uk)

**Newsletter Editor:** Mary Halliwell, e-mail: [j.halliwell165@btinternet.com](mailto:j.halliwell165@btinternet.com)

**IAA Representative:** Ferial Evans

**Ipswich Society Representative:** Ken Wilson

**Members:** Stuart Curtis, Joan Munns

**Ex-officio Member:** Peter Berridge, Colchester and Ipswich Museums Manager

Any correspondence, except where indicated, should be sent to:

FOIM, c/o Ipswich Museum, High Street, IPSWICH IP1 3QH

All Council Members can be contacted via our Website: [www.foim.org.uk](http://www.foim.org.uk)

---

## FOIM CORPORATE MEMBERS

The Arlingtons Brasserie

Barnes Construction

Belvedere Reproductions

W D Coe Ltd.

Dummett Copp

Ipswich Building Society

Ipswich School

The Linden School of Music

Notcutts Nurseries Ltd

Ryan Insurance Group

Stan Gaskin

Suffolk New College

Titchmarsh & Goodwin

Watson & Hillhouse Ltd

Newsletter Published by

The Friends of the Ipswich Museums

Registered Charity Number: 275527

