

The Friends of the Ipswich Museums

Newsletter
SPRING 2012



© Trustees of the British Museum

**Cover Story: The Mildenhall
Great Dish is coming to Ipswich**
- See Page 3, 4, 12

we look forward

FOIM

to promote the past

The Friends of the Ipswich Museums
Registered Charity Number: 275527
www.foim.org.uk

The Friends of the Ipswich Museums Newsletter

is published three times a year and distributed free to all members. The FOIM was set up in 1934 to support the work and development of the Ipswich Museums: Ipswich Museum in the High Street (including Gallery 3 at the Town Hall), Christchurch Mansion and the Ipswich Art School Gallery. Since April 2007 the Ipswich Museums have been managed as part of the Colchester and Ipswich Museum Service.

Friends continue to provide financial support to the Ipswich Museums as well as acting as volunteers. The Friends run outings, talks and other events for their members.

The Friends provide guided tours of the Mansion, including free *Peeps into the Past* at the Mansion at 11 am throughout most of the year. Tours for groups can be booked by contacting the Mansion (01473 433554).

FOIM is a member of the British Association of Friends of Museums and the Ipswich Arts Association.

Contributions to the Summer 2012 Newsletter should be sent to the editor by 1 June 2012.

Contents

Editor's Notes	3
Legacies	3
Chairman's Letter	4
Peter Berridge's Column	6
Friends News	8
Coin Cleaning.....	10
New Museum Website.....	11
British Museum Reception.....	12
Book Illustration Display.....	13
Recent Acquisitions	14
Two Corner Posts.....	16
Art School Notes	18
Discover Suffolk Group	20
Your e-mail address	20
New Clock Display.....	21
Colchester Update.....	22
Membership Information	22
The Committee	23
Corporate Members	23

Advertisements: 3,5,7,10,15,19,21

Our advertisements are all from Corporate members. Please support them.

Have you visited our website: www.foim.org.uk and our facebook page [www.facebook.com/ipswichmuseums?](http://www.facebook.com/ipswichmuseums) We use our website to advertise events notified too late to be included in the Newsletter

We look forward



www.foim.org.uk

to promote the past



FOIM is a subscribing member of the Ipswich Arts Association, please visit their website www.ipswich-arts.org.uk for further information.

Editor's Notes

Although there is bad news about future financing of our museum service (page 6) there are plenty of exciting things going on. We look forward to seeing the Mildenhall Great Dish on display in the Mansion (page 12). The exact dates are not yet known, but will be published on the new Museum Website (page 11) or contact the Mansion on 01473 433554.

I was very pleased to receive a contribution from a member of the Friends – George Pulham tells us about cleaning iron age coins on page 10.

Tina Campbell has organised a walking tour of Hadleigh and an overnight trip to Kent for us (page 8) and the Mansion Guides are offering several special tours (page 9).

As an innovation we are planning a special event for new members (page 8). We hope this will become a regular activity.

Mary Halliwell

Do you want to receive Museum Service events' listings by post?

This can be arranged if you contact Mary Halliwell, 31 Queens Road, Felixstowe IP11 7QU

**BELVEDERE
POLISHERS**

Does your table/furniture have cup marks and other unsightly signs of wear?

Call Belvedere today and ask about their FREE service.

- Competitive prices
- Insurance work
- Furniture repairs
- Collection and delivery
- Furniture designers and manufacturers

Guarantee

If for any reason you are not happy with the job we have done then we will do it again free of charge for you and give you half the cost back.

Tel: 01473 807719

11 Dove Street, Ipswich IP4 1NG
www.belvederereproductions.co.uk

Legacies

Last year we received the good news that Vera Gwendoline Mary Auckland had generously remembered the Friends in her Will with a generous legacy. We now have the funds and the Museum service is of course aware of the gift: we expect to be able to announce shortly exactly what this donation has allowed us to acquire.

If you too would like to remember FOIM in your Will you can be assured that any gift we receive will be used to enhance or conserve the collections of the Ipswich Museums. If you are considering a legacy, please speak to your solicitor. Our registered charity number is: 275527.

Chairman's Letter

It continues to be an interesting time at FoIM with many activities to progress and new ideas to develop. There was a Reception at the British Museum (BM) on 28 November to celebrate the partnership between the British Museum and Ipswich Museum (see page 12). We put in a good presence with eight committee members, some with guests, attending. BM Director Neil MacGregor introduced the evening, IBC Council Leader Cllr David Ellesmere spoke, and then Maggi Hambling gave a rousing speech. It was wonderful to be at the BM on such an occasion.

The Mildenhall Great Dish (see front cover) will soon come on loan from the BM to the Mansion: it is an extraordinary treasure, a stunning work of art - astonishing craftsmanship. It is featured on the cover of this Newsletter. This partnership, the first of its kind, should be very good for us.

We have been keen to get more publicity for the Friends. Ipswich Borough Council's (IBC) Max Stocker organised an article in *The Angle* on 3 November with a photo (see back cover) of Delly Newson our Hon Secretary fixing a copy of our new recruitment poster with image of a painting by Glynn Morgan to our display at

the Mansion. If members have any suggestions of where this poster might be placed please contact Jerry Latham.

I am sure that most members will know about the Never Ending Mural and may have been down to the waterfront to inspect this work in progress. On 18 October I met John Edwards, the artist in charge, Greg Cooper (IBC), and several of the young volunteers for a meeting at the Mural. We agreed the wording and location for our acknowledgement credit. It will be in their standard lettering on the 'pelmet' above the panels that include the image of the Museum's giraffe. I will seek another photo-opportunity when this is done in the hope that it might encourage new members.

Once again our Christmas Party was a most enjoyable event. I sent a personal invitation to all our Corporate members offering complimentary tickets - a nice way to say thank you for their support. We enjoyed a delicious buffet, excellent wine and we had a very good turn-out. Thanks to committee members for their hard work on the evening and for staff members on duty for their valuable input. The raffle made a splendid £181.

In the past, individual committee members have taken on the responsibility for arranging talks and visits. Seven of us met to talk about ways of sharing ideas and a useful discussion took place with many proposals to be developed. If you have any suggestions for speakers or subjects for talks please contact Paul Bruce. You should contact Tina Campbell about visits.

This year we celebrate our 78th year - the Friends were set up in 1934 but re-established around 1977. So this year we will be either 35 or 78! I have suggested to the committee that we should

celebrate these achievements. Watch out for further information.

I am glad that several members have contacted me in the last months. If you have questions or suggestions please do get in touch and do come to the AGM on 3 April - we have an interesting speaker and the formal part is usually over speedily.

Alan Swerdlow
FOIM Chairman

Please contact me if you would like to discuss any aspect of the work of FOIM. ☎ 01394 380044 or e-mail: alan@whr.demon.co.uk



The Linden School of Music

GERALDINE & FRIENDS
SINGING GROUP

PIANOFORTE/KEYBOARDS
SINGING
CLASSICAL GUITAR

Specialist in teaching Adults and Young Singers
Young Pianists considered from 5 years of age

Mrs Geraldine Stevenson-Patey

36 High Hall Close, Trimley St. Martin

Felixstowe, IP11 0TJ ☎ 01394 275125

Member of the Incorporated Society of Musicians

Peter Berridge's Column

I have to start by letting you know that we have been unsuccessful in our funding application to the Arts Council under the Major Grants Programme. It is important to stress that in being unsuccessful through this funding bid it is not a reflection on the quality and excellence of what we have achieved over the last few years and what we will undoubtedly continue to do in the future. As Helen Lax, Regional Director, East, Arts Council England, has said:

“We understand that this is very disappointing news for Colchester and Ipswich Museum Service. The Service submitted a strong application, particularly around their activities with audiences and their work with children and young people. Unfortunately, we received many more strong applications than we could fund. The Arts Council is of course committed to supporting the Museums sector in the region, so we will be working closely with Colchester and Ipswich Museum Service and their local authority partners over the coming months to help them to adjust to these changes.”

The *Major Grants Programme* replaced the *Renaissance* funding that we have been receiving since April 2003 and which in the

current financial year was worth £774,000. Its loss is clearly going to have major implications and mean a very difficult time for us. After taking various things into account, such as one-off project funding, the sum that now needs to be dealt with is around £450,000. This seems likely to translate to the loss of a significant number of posts though we are doing everything we can to reduce the total needed. In considering any redundancies it is important that we end up with a balanced structure that is fit for purpose. We are already working very hard on producing a new staffing structure as we have to have this ready very soon. In terms of tackling this issue the fact of the partnership between Ipswich and Colchester makes it slightly easier to bear the necessary cuts though of course no less painful for those directly effected by redundancy. In the context of these cuts it is also important to stress that at present there is no contemplation of any closure of the museums and both Christchurch Mansion and Ipswich Museum will continue on the current pattern of opening hours.

While working through these very difficult times it is important that we continue to look to the future

and be ready to begin to build on opportunities as they arise in the coming months and years. For instance in the autumn the *Arts Council* will be launching the *Strategic Grant Fund* which will, in particular, be designed to help those larger organisations, such as ours, that were not successful or eligible under the *Major Grants Scheme*. We also need to start now in developing our campaign to submit a new application during 2014/2015 for funding from the *Major Grants Scheme* from 2015/2016 onwards.

I have already been asked several times what will be the implications for our plans around the purchase of the Ipswich Art School and the major redevelopment of Ipswich Museum? The simple and quick answer is that they will not be adversely affected. In fact they become even more important and we will place even more emphasis on them. The two major redevelopment projects currently being undertaken by the museum service, those related to Ipswich Museum and Colchester Castle, are part of the long term sustainability of the organisation and are of critical importance.

We also have some good things to look forward to over the next few months and years. For instance our relationship with the British Museum continues to be strong and we will work with them

in relation to a number of areas but particularly the redevelopment of Ipswich Museum. To this end they are lending us the spectacular Mildenhall Dish as described elsewhere in this newsletter. We also have the opportunity to secure a year's funding for two further trainee posts to help us in our continuing efforts to improve the documentation and care of the museum collections in Ipswich.

So while the loss of this funding is clearly very disappointing, and will be very difficult in relation to the necessary redundancies, it is just a temporary reverse and we will continue to build and grow the museum service in future years.

Peter Berridge

Museum Manager



At 7pm on 10 May the Museum Service has arranged a talk at the Mansion:

The Mildenhall Treasure

Cost: £7 per person (inc wine/soft drink)

Booking essential: 01473 433691

Friends News

Annual General Meeting 2012

The Annual General Meeting will take place in Christchurch Mansion at 7.30 pm on Tues 3 April 2012. Tea and coffee will be served from 7.00 pm.

After the business is concluded Simon Cairns, the Director of the Suffolk Preservation Society will speak.

Please see separate booklet about the AGM business and the AGM talk distributed with this Newsletter

2012 Subscriptions

Barbara Cole thanks all members who have paid their subscriptions promptly, but if you have not yet paid, Barbara will be very glad to hear from you (35 Pownall Road, Ipswich IP3 0DN).

Subscription rates are given on page 22.

Membership Secretary's Report

We welcome eight new members since the last newsletter:-

Miss J Davey - Student
Lily Jarrold - Young Member
Mr J Biglin
Mr & Mrs M Elmy
Mr & Mrs C Burdon
Mrs A. Vaughan
Mrs C Tremlett & family
Mr & Mrs P Grotier & Family

We hope that you will all enjoy your membership.

We now have 341 Members , which means around 500 in real terms, but we need more. Please try to recruit at least one new member this year if this happens we would double our membership. We would also welcome more young members, particularly students.

We would like to meet our new members. The Mansion Guides have volunteered to host an afternoon tea party at the Mansion for new members. There will be the opportunity to meet members of the FoIM committee and to see more of the Mansion. Those members who joined since the 2011 AGM will be receiving an invitation.

Barbara Cole
Membership Secretary

From our Trips Organiser

A Walking Tour of Hadleigh

On Wednesday 23 May a leisurely walking tour of Hadleigh has been arranged, preceded by lunch at Tina Campbell's house.

We will meet our guide at the Guildhall at 2pm; the tour takes about 2 hours. We will visit the Church and Deanery Tower, also

the Guildhall where tea and biscuits will be served at the end of the tour.

A booking form is included with this Newsletter. This event can accommodate 20 people. It should be possible to arrange further tours if this event is over-subscribed.

Chatham Historic Naval Dockyard and Leeds Castle

I am delighted to announce an overnight trip to Kent. The dates for this visit will be 27-28 September 2012, and will include an overnight stay at the 4 star Mercure Tunbridge Wells hotel, an 18th century building offering tranquillity and ample creature comforts.

Included in the price of £140 per person is admission to the Naval Dockyard, overnight accommodation, breakfast and dinner, including a glass of wine, also admission to Leeds Castle.

This is planned as a leisurely excursion to take in the history of this fascinating place, steeped in our nation's maritime heritage. After a comfortable night at our hotel we will explore the glamour of Leeds Castle (see back cover). If you are interested in joining this trip please send off the form distributed with this Newsletter.

Tina Campbell
Trips Organiser

Mansion Guides

The Guides arranged four special Winter Tours on different themes, which all proved to be very popular. In November, Marjorie Carter led a tour "Passing the Time" looking at the Mansion collection of clocks. There is another chance to catch this tour on Sat 7 July at 2pm. Book early as numbers are limited.

In December, Erica Burrows led a tour "Christchurch Characters" which told the story of the owners of the Mansion through portraits and other items in the collection.

Joan Munns' tour in January "Portraits and Panels" looked at some of the earliest images in the Mansion from the Tudor period, and what they tell us about the lives and thinking of people of the time. Joan will be taking this tour again on Wed 4 July at 2 pm. Again, numbers are limited so book early as above.

At the end of January, Liz Latham took a tour called "The Cobbold Connection" which concentrated on the Cobbold family's association with the Mansion. This tour proved so popular, Liz had to put on another one for the reserve list!

The success of the Cobbold tour shows how interested people are in this famous family and, of course, the Margaret Catchpole connection. Therefore, we are

giving a series of short talks on the subject of Margaret Catchpole to link in with Eastern Angles' production about her which runs from 21 June – 8 July. It is proposed that visitors will start with a talk at the Mansion then a shuttle bus will take them from outside the Park to see the play at Bentwaters. Provisional dates are 1 pm on 24, 26 June and 8 July for matinee performances, 5 pm 29 June for an evening performance. Look out for details in Eastern Angles publicity releases and on our own website, www.foim.org.uk.

The daily short tours of the Mansion called "A Peep into the Past" will recommence on 1 March, Tues – Saturdays at 11am, Sundays at 2 pm through till November. There is no charge but

donations in the FoIM box are welcomed. No booking required. These tours are not suitable for groups, but a selection of full tours on various themes for larger groups is available by arrangement starting at £4 per head – all proceeds to FoIM funds. Find out more about the collections and the families of the Mansion.

**Erica Burrows,
Guides Co-ordinator**

To book tours contact the Mansion 01473 433554 or ericab@btinternet.com



Coin Cleaning

In October the general public were invited to Ipswich Museum to help clean coins from the Wickham Market Hoard. George Pulham writes about his experience cleaning the Anglo-Saxon coins.

We assembled outside the Museum at 10 o'clock on Wednesday 13 October. We were ten in number.

Caroline unlocked the door and showed us where to sign in. Then she showed us the way to the lab. Each volunteer had a small tub of acid, another of lime water and a tub inscribed 'I.M.S'. When I enquired of Ben he said that this was 'industrial methylated spirit'.

In my bag I had sandwiches and two cans of coke, but I had to go outside to drink my coke. We were each provided

with apron and gloves and two sticks about three millimetres in diameter and sharpened to a point together with a large wad of cotton wool. When we were given our coins, they were larger than a 5p coin but not so large as a 10p. We dipped one stick in the acid and then rolled a tiny piece of the cotton wool round the end and dipped it again into the acid. Then we rolled the cotton wool over the coin to remove the dirt. The coins were 40% gold plus other metals. The "Wickham Market Hoard" comprised

some 840 coins unearthed near Dallinghoo.

With the first coin we all found it very difficult but soon we began to get the hang of it. Some coins were almost round, others more oblong. When we had finished with the cotton wool, there were ridges in the coins with dirt trapped in the ridges. So we took our second stick and inserted the point to remove the dirt.

We started at just after ten and went on till half past eleven, then broke for coffee.

At ten to one I finished cleaning one coin. So I adjourned to Christchurch Park to eat my sandwiches and wash them down with some coke. We restarted at two o'clock.

I think I cleaned about fifteen coins but by quarter to three I felt I had had enough. So I made my apologies to Caroline and Ben and headed home.

I hope readers of the Newsletter will enjoy having an account of what we did.

George Pulham

Colchester and Ipswich Museums launch a new Website



Colchester and Ipswich Museums has launched www.cimuseums.org.uk, a brand new, customer-focused, interactive website. Visitors to the site will be able to see information on all areas of the Museum Service in one place for the first time. It provides detailed information on each museum venue and what they can see and do, forthcoming events and exhibitions, close-up photographs of highlighted objects and the opportunity to delve into the collections pages to find

out more.

The new website also includes a new area for schools, with increased access to downloads for visits, details on a wide range of activities for the permanent and temporary exhibitions and a gallery to show children's work connected to the school resources that we provide for the community.

Laura Hardisty
Marketing Officer

British Museum hosts reception for Ipswich Museum

Jayne Austin tells us about a reception at the British Museum which was attended by eight members of the Friends.



Maggi Hambling

Plans for the redevelopment of Ipswich Museum were given a national profile at a reception hosted by the British Museum in London.

The event marked the partnership between the British Museum and Ipswich Museum and provided an opportunity for those present to hear about plans for the purchase of Ipswich Art School and the redevelopment of the Museum site in the High Street, which will enable it to become a major cultural venue.

Colchester and Ipswich Museums Service is planning a multi-million pound project to create a combined centre for heritage, visual art and performing art. The redevelopment will include Ipswich Museum, Ipswich Art School and the New Wolsey Studio. It will become a regional and national tourist attraction and a source of learning, pride and inspiration for the whole community.

Speakers at the event that took place on 28th November 2011 included Neil MacGregor, Director of The British Museum, Councillor David Ellesmere, Leader of Ipswich Borough Council, and Maggi Hambling CBE, artist and patron of the Ipswich Art School.

A large number of people representing many local, regional and national organisations attended. This demonstrated the wide ranging support and interest that the planned project in Ipswich is generating. Also included among the guests were a few high profile individuals and couple of famous faces!

Guests were able to view the Mildenhall Great Dish, which will travel to Ipswich this year for display at Christchurch Mansion as part of the British Museum's Spotlight Tours financed by The Art Fund Prize 2011. The dish will be returning to Suffolk for the first time since its discovery in 1942. The British Museum has also had initial communication with Mildenhall Museum. It is hoped that this will be an opportunity for both museums to raise the profile of their respective redevelopments.

The British Museum continues to support the redevelopment of Ipswich Museum as part of their programme of partnerships with museums and galleries of all sizes across the UK.

Jayne Austin
Collections Manager

Suffolk artists' illustrated books go on display

Joan Lyall tells us about a temporary exhibition in Christchurch Mansion.



Anne created an elegant Cruella De Vil, whilst Janet used Dodie's own Dalmatians as models to create convincing canine characters.

Mary May, an author of five books illustrated by Anne Grahame Johnstone, recently gifted her large collection of Janet and Anne Grahame Johnstone books, puzzles, greetings cards and original illustrations to the collections of Colchester and Ipswich Museum Service.

A new display is now on show in the China Room at Christchurch Mansion, Ipswich until 15th April 2012.

It celebrates twins Janet and Anne Grahame Johnstone, imaginative illustrators, who lived and worked in Badingham, Suffolk. They worked together for over thirty years, producing over five thousand illustrations and bringing to life a range of children's books which have been translated into many languages and enjoyed the world over.

Having illustrated many volumes of fairy stories, myths and legends, nursery rhymes and prayers, they reached an even wider audience by producing a large amount of artwork for TV programmes such as *Andy Pandy* and *Bill and Ben the Flowerpot Men*. In 1956, Dodie Smith invited Janet and Anne to illustrate her first children's book, *The Hundred and One Dalmatians*.

This display was created by Sylvia Cox and John Gowen who are working at Colchester and Ipswich Museums as Heritage Documentation trainees.

Joan Lyall
Documentation Officer



Recent Acquisitions

Philip Wise tells us about new items which have recently been added to Ipswich Museums Collections. The rulers shown beneath the illustrations are marked in centimetres and millimetres.

Over the last few months a variety of things from natural history to contemporary art have been acquired by Ipswich Museums.

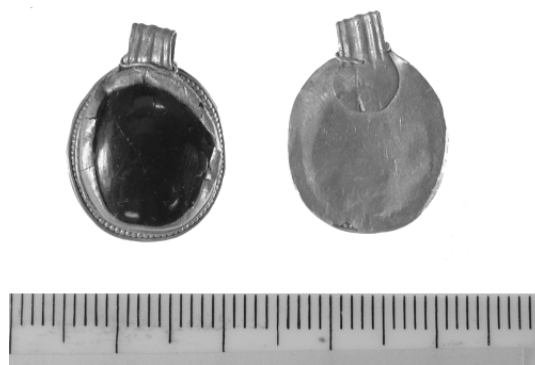
A collection of bird's eggs made by a Mrs Steed when she was a child between 1932 and 1943 was a very welcome addition to the collection of Suffolk natural history. The majority of the eggs were collected on Mrs Steed's father's 400-acre farm, Goldingham Hall Farm in Bulmer, near Sudbury, where she grew up. This collection contributes to our knowledge of the bird species that could be seen in Suffolk in the 1930s.



From the Woodbridge Silver Hoard

The Friends have financially supported the purchase of several Treasure items in recent months, including a Roman coin hoard found near Woodbridge. This hoard consists of 16 silver coins or denarii, the earliest being issued by Vespasian (AD 69-79) and the latest by Marcus Aurelius in AD 172. Other emperors present in the hoard are Domitian, Trajan, Hadrian and Antoninus Pius as well as the empresses Sabina, Faustina Senior and Faustina Junior. Such savings

hoards are not uncommon, but are always of interest both to museum visitors and numismatists.



Gold Mounted Garnet Pendant

Ipswich Museum is rightly famous for its Anglo-Saxon collection. We were therefore delighted to be able to acquire with the help of the Friends a complete oval-shaped gold pendant set with a cabochon garnet and with a grooved attachment loop.

Although of small size, at 20mm or less than an inch in diameter (including the attachment loop), this is nevertheless a very important piece of seventh-century metalwork. Gold and garnet pendants are frequently found in female graves and often several of them were used on the same necklace with spacer beads between them, for instance in a find from Desborough in Northamptonshire.

An unusual object which may have functioned as a hooked tag or clothes fastener was found near Woodbridge in September 2009. Dating to the sixteenth century, it consists of a

lozenge-shaped silver plate with floral decoration. This acquisition was also financially supported by the Friends.

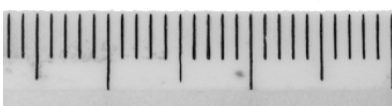


Hooked Tag from Woodbridge

A silver gilt dress pin found near Beccles in April 2010 was a welcome opportunity to add to the collection of Tudor jewellery. Spherical-headed dress pins were used by women to secure their clothing or hair during the sixteenth century. As a fashion item this dress pin complements the details of jewellery shown in the Tudor portraits displayed in Christchurch Mansion. This acquisition too was financially supported by the Friends.



Silver Gilt Pin from Beccles



Of particular local significance is a copy of 'The Horkey', a children's book by Robert Bloomfield which was published in 1882. This charming work incorporates Suffolk dialect words into a long poem with delightful coloured illustrations.

A resin maquette of 'The Navigator' by John Atkin was of great interest as many people will be familiar with the sculpture made in 2003 for the Orwell Riverside Development in Ipswich. 'The Navigator' is inspired by Ipswich's maritime history and industrial past, and the artist drew on navigational instruments and nineteenth-century stem castings for ships as well as more generally wishing to reflect the 'wheels' of industry.

Philip Wise
Heritage Manager

Coes - A world of Fashion
 MENS • WOMENS • CONTEMPORARY
 CASUAL • BUSINESS • LEISURE • SPORTS
 FORMAL • CHILDRENS • SCHOOL
 WEDDING & EVENINGWEAR HIRE
and so much more!

Coes Ipswich 20-28 Norwich Road IP1 2NH
 Open Tues - Sat 9 am - 6 pm (Closed Mon) Customer car park at rear of shop
 Tel Ipswich (01473) 256061 Fax (01473) 254531 email info@coes.co.uk
 Menswear branches also at Beccles Dovercourt Felixstowe Lowestoft & Maldon

www.coes.co.uk

Ipswich's Medieval Timbers - two corner posts

Sylvia (documentation trainee) tells us about the work she is doing on Ipswich's collection of Medieval timbers.

Since starting my traineeship at Colchester and Ipswich Museums, I have embarked on a large retrospective documentation project involving a nationally significant collection of carved medieval timbers from the Ipswich area. In the initial phase of the project I spent several weeks carrying out a thorough inventory of the timbers. With a comprehensive record of what exactly is in the Museum's timber collection, I am now conducting research to establish which buildings in Ipswich the pieces of wood came from and how Ipswich Museum came to acquire them. This process is complicated by the fact that many of the buildings the timbers came from have long since been demolished. Although previous staff at the Museum were occasionally given warning of a building's impending destruction, they often had to rush out to salvage what they could on site. It is not surprising that in such circumstances, niceties such as labelling and marking the timbers were overlooked.

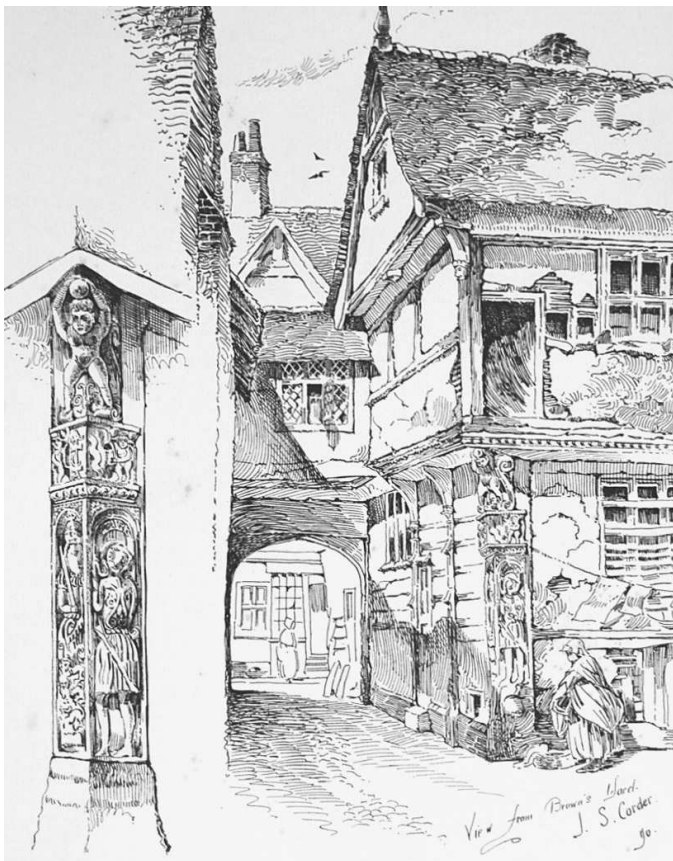
I am going to share with you the story of two large corner posts in the Museum's collection that I hope you will find interesting. One post, which dates from the sixteenth or early seventeenth century, is particularly distinctive. Although this post was marked with a Museum accession number, little was known about its provenance. In my efforts to find out more about the post, I utilised the invaluable collection of architectural drawings and paintings of Ipswich's historical buildings at Christchurch Mansion. During one of my searches, I came across a large mid-nineteenth-century book called



'Picturesque Antiquities of Ipswich', which revealed that the corner post was once situated on the corner of the Ancient Merchant's House in Brown's Yard. 'Though once magnificent', however, the author wrote that the Merchant's House had 'fallen into a condition of ruin and degradation'. Nevertheless, 'the gable post... is worthy of particular notice, having on one side a full length figure of Elizabeth I in relief, crowned, holding a sword in her hand. On the other is a male figure in armour... Above the head is the word MARS... The entire pillar is surmounted by a naked figure (see picture above) exalting a heart above its head, and apparently

supporting the eaves of the first storey upon its shoulders, after the position of Atlas'. This fabulous description left me in no doubt that this was indeed one of the corner posts in the Museum's collection. The passage goes on to discuss the possible ownership of the Ancient Merchant's House but concludes that 'the ancient ownership will long remain a vexed question, for the solution of which, Antiquarians must yet plague themselves with doubt and research'. My research at the Mansion also yielded an etching dated 1890 of the corner post in situ, by the Ipswich architect J S Corder, part of which is pictured below.

'industrial development'. Although the Inn could not be saved, the 2.64metre corner post was taken into Ipswich Museum's collections.



Another of Ipswich's corner posts depicts the story of the Fox and Goose fable. It formerly stood outside the Half Moon Inn which was once at the corner of Lower Brook Street and Foundation Street. The Half Moon Inn was operational in the fifteenth century and was referred to as the oldest inn in Ipswich. In early 1960, however, efforts to save the Inn failed and it was demolished to make way for



Right: Moving the "Fox and Goose" post

Below: a 19th Century sketch of the Half Moon Inn



Sylvia Cox

Documentation Trainee

Ipswich Art School Notes

'WORK IS ART', 'ART IS WORK'

'Gareth Bayliss: Return to The Ipswich Art School' has been a hit with our young learner groups who have had the chance to work with the artist, a former IAS foundation student, through sessions that have included the Big Draw and Saturday Art Club making graphic and wearable artworks.

Since completing his studies in Graphic Design at Camberwell College of Art (1999) and Communication Art & Design at the Royal College of Art (2001) Gareth has published and exhibited work locally, nationally and internationally, and continues to teach as a visiting lecturer of Art and Design.

Gareth's work has 'always been about drawing' a playful enjoyable activity through which to evolve ideas into finished one-off pieces, serious publications and unresolved works in progress. Young participants have enjoyed his accessible teaching style which celebrates 'happy accidents', craft skills and unique outcomes.

An Artist Q & A (23 Feb, 7pm) invites us to consider the 'value' of design by looking at some of the preliminary ideas and production processes behind his commercial graphic and typographic design work, while looking at how this has influenced his personal Fine Art practice and compulsive obsession with drawing.

Gareth has recently contributed an edition to Eastern Pavilions Print Portfolio, representing The Ipswich Art School in a collaborative project with 11 other arts organisations and artists. www.easternpavilions.org



Screen Print T-Shirt

Follow the artist here:
garethbayliss.blogspot.com or
broadcastgarethbayliss.blogspot

Julia Devonshire
Arts Project Co-ordinator

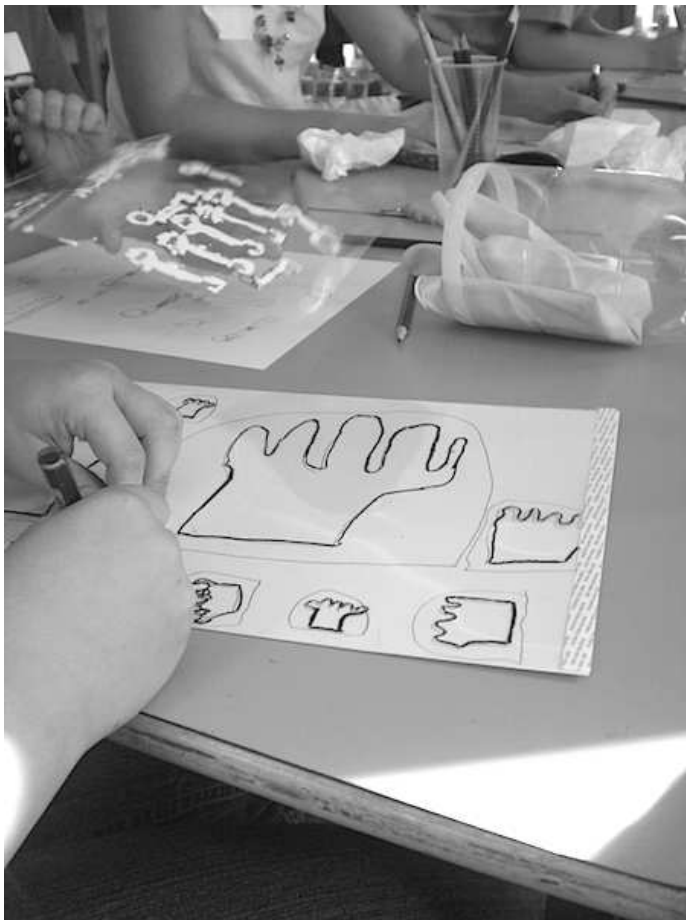
Coming Soon... Saatchi Exhibition

The next exhibition from the Saatchi collection will open on 23 March 2012 at Ipswich Art School. This six-month exhibition from the world renowned Saatchi Collection gives unique access to pieces of work from international artists with a connection to East Anglia.

We are working to finalise the list of artworks that will be on display so make sure you save the date and watch the website, www.cimuseums.org.uk to find out what artworks will be on display.

Laura Hardisty
Marketing Officer

Saturday Art Club at Ipswich Art School



- practising artists
- a range of media and ideas (traditional and new)
- a variety of activities inspired by the work on show and in the collections
- other young people with shared interests, with weeks dedicated to age groups 7- 11yrs and 11+

There are fortnightly sessions for: 7 - 11yrs and 11+

Participants can attend morning or afternoon sessions: 10.30am -12.30pm or 1.30pm - 3.30pm.

To join please contact 01473 433548 or email museums@colchester.gov.uk.

Fees £45 or 'pay as you go' at £10 per session.

Julia Devonshire
Arts Project Officer

These fun and experimental sessions enable participants to work with practising artists to discover new techniques and develop artistic ideas. The team of experienced artist educators guide groups through a variety of traditional and new media so that they can get more out of the exhibitions on display within Ipswich Museum and the Art School. The emphasis for the autumn term was looking at drawing and printing techniques, both traditional and experimental. The participants had the opportunity to build a portfolio/sketch book of their own work produced within the sessions.

All of the artist-led sessions will be responding to the exhibitions on show at the Ipswich Art School. Young participants can engage with:

GET HOOKED ON CARAVANS WITH



SHARMAN CARAVANS LTD
(EST 1974)

For All Your Caravanning
• REPAIRS • SALES
• SERVICING • ACCESSORIES
• NEW & USED CARAVANS
LUNAR MAIN DEALER

View all our stock on our website
www.sharmancaravans.co.uk

01473 713284/728238

The Caravan Centre, Colchester Rd, Ipswich



The Discover Suffolk Group

Discovering Suffolk was formed in September 1995, following the closure of a (successful) Evening Class by Suffolk County Council. We are completely self-financing.

We meet at Westbourne Sports College, most Monday evenings between September and March (two terms of 10 evenings each), Each term is concluded by a meal out.

We have visiting speakers each of these evenings on a variety of subjects relating to Suffolk, mostly Local History but sometimes Natural History too. On the odd occasion, we have talk on a non-Suffolk related topic - just for a change.

In the Summer month evenings (and the odd day) we have visits out - again mostly to Suffolk venues. We also have the odd day

out to other locations (e.g. Hampton Court Palace) and in May we have a Weekend Away (Friday morning to Sunday night) to somewhere else in England (Shropshire in 2012).

Our Fees are £25 per term for the two terms at Westbourne. Meals out are extra.

Summer visits are 'pay as you go' as are the days out and the weekend away.

Christmas 2011, we celebrated our 600th. meeting.

If you would be interested in join us please contact me.

Mike Smith, Chairman

discoversuffolk@btinternet.com

01473 214494

Please tell us your e-mail Address

If you have an e-mail address we would like you to tell us. This will enable us to keep you up to date with events which are planned between issues of the Newsletter.

If we do not already know your e-mail address please send a message to Jerry Latham using our website: www.foim.org.uk

or email him directly using: contact@foim.org.uk

Your email address will only be used by us to communicate with you. It will never be revealed to anyone outside our organisation.

A new display of Colchester-made clocks is now open in Hollytrees Museum, Colchester



The display emphasises not only the importance of Colchester as a provincial clock-making centre, but also the significant contribution made by Bernard Mason in collecting and preserving these clocks for future generations. Seven of the longcase clocks are wound weekly (although

A selection of clocks, previously on display in Tymperleys Clock Museum, can now be seen in one of the ground-floor rooms at Hollytrees. The room, now renamed 'The Bernard Mason Gallery', includes a mixture of longcase, lantern and bracket clocks, as well as a selection of pocket watches.

we can't guarantee they'll tell the right time!) so whenever you visit, you can hear the beautiful sounds of the chimes.

Catherine Newley
Assistant Curator of
Community History



For a more personal approach to all of your business & personal insurance needs

Tel: **0844 573 9390**

e-mail: info@ryan-group.co.uk

Offices at 21-23 Princes Street & Crane Hall, London Road, Ipswich

www.ryan-group.co.uk

Colchester Castle Redevelopment Update

The Colchester Castle Redevelopment Project is progressing well. The first progress report was sent to the Heritage Lottery Fund in November 2011.

The partners in the linked Norman Connections project are currently preparing a tender to design a website to showcase the project's Norman heritage sites in England and France (including 3D virtual reality tours and a film about the Normans and their historical context). The film about the Normans will be part of the new displays in Colchester Castle. This element of the overall redevelopment project is supported by the European Cross-border Cooperation Programme INTERREG IV A France (Channel) – England, co-funded by the European Regional Development Fund.

The second design workshop was held on 7 December. It was attended by 28 people, including representatives from the museum user forums and advisory groups, Friends of the Museum,

Friends of the Castle Park and Friends of the Roman Wall. The workshop looked at the design briefs for interpretation of the Castle as a building, the ground floor displays and the town's wider heritage interpretation. The tender phase for the design works starts in December 2012.

Redman, the lead designers, have produced design proposals for the wider heritage interpretation panels. The first three panels to be developed are for the Balcerne Gate, Duncan's Gate and the Roman Theatre in Colchester. They should be in place before summer 2012 and will act as a pilot scheme to gather public evaluation in advance of the main design work.

Readers can follow the project on the new museum website (www.cimuseums.org.uk), under 'Major Projects'.

Tom Hodgson,
Project Manager

Membership Details

Membership rates are:

Joint/Household	£15
Single	£12
Student (under 25)	£3
Corporate	£100

These are the minimum fees. We would not dream of preventing anyone paying more. A membership form can be downloaded from our website or contact our Membership Secretary; Barbara Cole, 35 Pownall Road,

Ipswich IP3 0DN, 01473 287716.

Those interested in becoming corporate members should contact us direct via the website.

Members have free entry to Colchester Castle Museum.

Membership as a Gift

All you have to do is send the appropriate subscription (payable to FOIM) together with contact details of the recipient to Jerry Latham, who will prepare a gift pack for you to send.

The FOIM Committee 2011-2012

President::	Gay Strutt
Vice President:	Paul Bruce
Chairman:	Alan Swerdlow 01394 380044 e-mail: alan@whr.demon.co.uk
Vice-Chairman:	Jerry Latham
Secretary:	Delly Newson
Treasurer:	Peter Stockdale
Membership Secretary:	Barbara Cole, 35 Pownall Road, Ipswich IP3 0DN 01473 287716
Newsletter Editor:	Mary Halliwell, e-mail: j.halliwell165@btinternet.com
Guides Co-ordinator:	Erica Burrows
Corporate Members:	Stuart Curtis
Visits and Events:	Tina Campbell
Members:	David Kergon, Sheila Brooks Kathleen Daniel
IAA Rep:	Ferial Evans Rogers
Ipswich Society Rep:	Ken Wilson
Ex-officio Member:	Peter Berridge, Museum Service Manager

All members of the Committee can be contacted via
our Website www.foim.org.uk
or c/o Ipswich Museum, High Street, Ipswich IP1 3QH

Our Corporate Members

The Arlingtons Brasserie
Barnes Construction
Belvedere Reproductions
W D Coe Ltd.
Dummett Copp
Elmy Cycles
J M Finn & Co
Jimmy's Farm
Ipswich Building Society
Ipswich School

The Linden School of Music
NFU Mutual
Notcutts Nurseries Ltd
Ryan Insurance Group
Sharman Caravans Ltd
Stan Gaskin
Suffolk New College
Titchmarsh & Goodwin
Watson & Hillhouse Ltd

In this issue:

Leeds Castle, Kent the destination for an overnight coach trip in September, page 9



Children's book illustrations on display at the Mansion - see page 13

L to R: Delly Newson, our secretary putting up a Friends Poster watched by Alan Swerdlow (Chairman), Jerry Latham (Vice Chairman) and Peter Stockdale (Treasurer) - see page 4



plus Friends activities and more museum news

www.foim.org.uk

www.facebook.com/ipswichmuseums

We welcome new members to help us support our excellent Ipswich Museums. Details of membership are given on page 22 We use the website to advertise events which are notified too late to be printed in the Newsletter.