

The Friends of the Ipswich Museums

Newsletter

SUMMER 2012



**Cover Story: The refurbished
High Street Exhibition Gallery**

we look forward

FOIM

to promote the past

*The Friends of the Ipswich Museums
Registered Charity Number: 275527
www.foim.org.uk*

The Friends of the Ipswich Museums Newsletter

is published three times a year and distributed free to all members. The FOIM was set up in 1934 to support the work and development of the Ipswich Museums: Ipswich Museum in the High Street (including Gallery 3 at the Town Hall), Christchurch Mansion and the Ipswich Art School Gallery. Since April 2007 the Ipswich Museums have been managed as part of the Colchester and Ipswich Museum Service (CIMS).

Friends continue to provide financial support to the Ipswich Museums as well as acting as volunteers. The Friends run outings, talks and other events for their members.

The Friends provide guided tours of the Mansion, including free *Peeps into the Past* at the Mansion throughout most of the year. Tours for groups can be booked by contacting the Mansion (01473 433554).

FOIM is a member of the British Association of Friends of Museums and the Ipswich Arts Association.

Contributions to the Winter 2012 Newsletter should be sent to the editor by 1 September 2012.

Contents

Editor's Notes	3
Legacies	3
Chairman's Letter	4
Peter Berridge's Column	8
Friends News	10
Ipswich Museum News	14
The High St Exhibition Gallery--	16
The New Victorian Room	18
Roman Coins from Woodbridge	20
Conservation Corner	21
Outreach Services	24
Learning & Events	25
Staff News	26
ITFC Project	28
Chinese Exhibition	29
Colchester Update	30
Membership Information	30
The Committee	31
Corporate Members	31

Advertisements: 3,7,17,20,23,24, 27,30

Our advertisements are all from Corporate members. Please support them.

Have you visited our website: www.foim.org.uk and our facebook page www.facebook.com/ipswichmuseums? We use our website to advertise events notified too late to be included in the Newsletter

We look forward



www.foim.org.uk

to promote the past



FOIM is a subscribing member of the Ipswich Arts Association. Please visit their website www.ipswich-arts.org.uk for further information.

Editor's Notes

In this edition Peter Berridge tells us about the progress which has been made over the last 5 years, and suggests we celebrate the fact we are now in a stronger position to cope with the current reduced funding.

The rise in the number of visiting school children is very apparent - one Tuesday when I was at the Mansion a Tudor workshop was in progress. On the following day, when I spent 3 hours at the Art School, three school parties visited.

David Jones writes about the new Victorian Room in the Museum which he has created. Bob Entwistle tells us how many of the exhibits were prepared by volunteers, many of whom are Friends. This room is already open. Soon the Wolsey Gallery

will re-open with a "Treasure" exhibition. The paintings will be returned early next year.

In Colchester an Exhibition of Chinese Treasures from Nanjing Museum has just opened. I am looking forward to visiting this exhibition which runs until 7 Jan 2013.

Mary Halliwell



Legacies

Last year we received the good news that Vera Gwendoline Mary Auckland had remembered the Friends in her Will with a generous legacy. We now have the funds and the Museum service is of course aware of the gift: we expect to be able to announce shortly exactly what this donation has allowed us to acquire.

If you too would like to remember FOIM in your Will you can be assured that any gift we receive will be used to enhance or conserve the collections of the Ipswich Museums. If you are considering a legacy, please speak to your solicitor. Our registered charity number is: 275527.

Chairman's Letter

By the time you read this it will be July: the Jubilee already a memory. I produce these letters by jotting down items as they crop up. Matters I think might be of interest. Inevitably some are already quite old by the time you receive your newsletter.

Annual General Meeting

I was delighted by the excellent attendance at the AGM in April. I added to my report printed in the AGM papers (and now on the web site) by mentioning some more recent activities. Peter Stockdale introduced the accounts for the year. Peter Berridge's report covered the considerable good news as well as the problems resulting from funding difficulties mentioned below. Dr Rosario Zinna generously provided two of his art works for a raffle. After the AGM we were stimulated by an interesting and challenging talk by Simon Cairns, Director of the Suffolk Preservation Society.

Arts Council England Major Partner Programme

In our last Newsletter Peter Berridge wrote about being unsuccessful in our funding application. The choice of the 16 partners in this programme was controversial: the total number of applicants was 29, so we were far from the only service receiving

bad news. The consolation is that we will be receiving one year's transitional funding of £431,000, the third largest such grant.

URGENT: Committee vacancies

As I reported at the AGM we are looking for a member to take on arranging our trips and holidays. Tina Campbell, who took on this role, has had to stand down. These events have been an important part of our activities for many years.

Stuart Curtis came off the committee as the member responsible for recruiting and looking after our corporate members – a job he carried out with great success. We now need to identify a member who might take on this work.

If you would like to help with either of these posts, or can suggest someone who could be interested, do please contact me and I can provide further information on what is involved.

Recruitment drive

At the AGM our membership secretary Barbara Cole challenged us all to recruit at least one new member thus potentially doubling our numbers. This would have many advantages not just subscription income but potentially greater take up for talks and trips.

We are enclosing with this Newsletter one of our new full colour membership leaflets with an application form. *Please hand it to someone you feel would enjoy membership.* Further copies are available from Jerry Latham – no prize for the member who recruits the greatest number of new people.

Event for new members

Thanks to our guides for arranging an afternoon for new members. They were shown round the Mansion in small groups and offered tea and a selection of delicious home-made pastries. We are already planning a repeat for 9 September.

Our First Annual Dinner

You will find a booking form with this Newsletter about this new activity. The Dinner will be held at Alnesbourne Priory Country Club where we have enjoyed so many talks followed by delicious buffet lunches. The date has been set as Friday 19 October at 7.00 for 7.30. I have invited Lord Phillips of Sudbury to be our after dinner speaker. Andrew Phillips is Chancellor of the University of Essex and a distinguished expert on charity law. Having been Sir Jimmy Young's Legal Eagle for 26 years we can expect an entertaining talk which, I am told, will include mention of John Stevens Henslow the founder of Ipswich Museum.

A glass of wine or soft drink on arrival is included followed by a choice of main courses and a dessert with tea or coffee and chocolates. Those of you who know the Priory will see the space transformed with round tables, linen etc. Tickets will be £25 a person with any surplus going to our funds. Please book early as we are limited in space. If this proves a success we could make the Dinner an annual event as we move towards our 80th year: we were set up in 1934 but re-established after the war in 1977 – so we might be only 35.

Volunteering

In February I attended a Volunteer Development Programme day arranged as part of the Effective Museums project. The museums present were Gainsborough's House, Museum of East Anglian Life, Landguard Fort & Felixstowe Museum, and Ipswich Transport Museum. The facilitator was Linda Brandish who provoked much useful discussion and many challenges. A focus was on how the recruitment and training of volunteers should become more professional with application forms, interviews, induction and monitoring.

There was discussion on how to interest members of minority groups perhaps introducing our activities to local ethnic minority forums. That reminded me of a

marvellous event in the Art School some years ago when the Sikh community entertained visitors with a spectacular show followed by a delicious lunch.

Staff departures

At a farewell party at the Mansion on 31 May the committee made personal presentations to six members of staff who over many years have been helpful to us in so many ways. We wish them well for the future. As I write, the Service is undergoing a consultation process on a new structure which may result in other staff losses.

Museum publicity

In a recent notice CIMS (Colchester and Ipswich Museums Service) announced that they are reducing the number of leaflets being printed 'to lessen the impact on the environment and save costs'. I have been told that the service will continue to produce leaflets etc. If you want to be on the CIMS emailing list you should send your details to laura.hardisty@colchester.gov.uk or call 01206 282434.

Saatchi exhibition

I was glad to see that the yellow signs around the town have a more meaningful wording than last time, but I do hope that before long the gallery will be given a new name – it is after all no longer an art school. Have you visited

any exhibitions? What would you like to see in future?

Fonnereau silver sugar casters

In May we heard that a set of three sugar casters from 1724/5 with Fonnereau arms were on the market and considered offering a generous grant towards their acquisition. The museum service told us that they had no funds available so we would have had to pay the full price. Usually, when we are asked to support a purchase, the staff provide us with comprehensive details as required in our Funding Policy agreement. This time we had to do our own research. Although the arms were correct, they were in a lozenge which means that the casters belonged to a single woman of the family, perhaps a sister, cousin or aunt, and so would not have been at Christchurch Mansion. After taking outside advice and two consultations with the committee the majority decision was that we should not buy them. You may have read an article on this subject by Dr John Blatchly in the EADT on 19 May in which he also mentioned a snuffer tray with Ipswich coat of arms that had come on the market.

Security

As guides representative on our committee Erica Burrows is regularly at the Mansion and has expressed concerns about the risks to our collections particularly

in the light of thefts at other museums internationally. We have discussed this and have been assured that the national museums security adviser has given our buildings a good report. We need to remain vigilant.

Staycations

In May, I heard a talk given by Keith Brown from Visit Anglia, our official regional tourism organisation. It was the week of the reports of three hour delays at airport passport control. Keith saw this as one of many important factors when people were considering where to spend their holiday and of the opportunities this presented for museums. There was much food for thought as far as FOIM is concerned particularly with our popular guided tours.

Keith mentioned four factors. *Quality*: people have rising expectations; their experience before, during and after their visit and that people are increasingly investing in quality: 'they don't do mediocre'. *Experience*: places of interest should create memories – we can learn something new. In a museum a guided tour possibly behind the scenes. *Value* is not just a question of price. *Time*: people are taking shorter holidays and making last minute decisions perhaps after watching the television five day weather forecast – people used to be cash

rich and time poor – now many are time rich and cash poor. Local attractions should team up – in our case joint promotions of Gainsborough, Constable and Munnings - could be promoted as a day out.

Email list

If you would be happy to receive occasion e-mail news from the Friends please send your details to Jerry Latham (see Page 13).

Best wishes

Alan Swerdlow
FOIM Chairman

Please contact me if you would like to discuss any aspect of the work of FOIM. ☎ 01394 380044

or e-mail: alan@whr.demon.co.uk

BELVEDERE
POLISHERS

Does your table/furniture have cup marks and other unsightly signs of wear?

Call Belvedere today and ask about their FREE service.

- Competitive prices
- Insurance work
- Furniture repairs
- Collection and delivery
- Furniture designers and manufacturers

Guarantee
If for any reason you are not happy with the job we have done then we will do it again free of charge for you and give you half the cost back.

Tel: 01473 807719
11 Dove Street, Ipswich IP4 1NG
www.belvederereproductions.co.uk

Peter Berridge's Column

As you know from the last newsletter we were not successful in securing funding under the Major Grants programme, the new scheme operated by the Arts Council. Firstly, it is very important to stress that this should not be seen as a failure. It is a simple fact that the nature and criteria for the funding scheme changed significantly from the previous one managed by the MLA. Most significantly the number of organisations in receipt of the funding has been more than halved. It is also clear that the Arts Council placed huge emphasis on scale of the organisations or partnerships that it awarded the Major Grants to, particularly around the level of funding that sat behind them. This meant that in the East of England we were in effect up against Norfolk Museum and Archaeology Service and a partnership formed by the University Museums of Cambridge. Clearly in terms of size and financial backing we simply could not compete with these two organisations.

Restructuring

The consequence of not being awarded the funding has necessitated a restructure of our organisation. In order to help us

do this the Arts Council has awarded us £431,000 covering the year 2012/2013 as transition funding. This transition funding is being made available to all museums which were previously recipients of funding under the Renaissance in the Regions scheme but which were not awarded money under the new scheme. Of these museums we have received one of the largest transition awards and it is designed to help us through the process and to support some specific projects linked to our longer term sustainability.

As we go through the process, during which time there will undeniably be some difficult and painful decisions to be made, it is important to remember that we will still be the third largest museum service in the East of England. Also, while numbers may be reduced we will still have all the necessary skills to sustain a strong and effective service. Staffing levels will be as high, and in some areas higher, than the combined numbers in Ipswich, prior to the merger, and in Colchester, prior to the Renaissance funding. Through the museum partnership we also have the greatly added benefit of the bigger pool of staff to draw on. This last point demonstrates even

ACHIEVEMENTS IN THE LAST FIVE YEARS

VISITORS

- Visits by Schoolchildren to the two museums in Ipswich up by over 100%
- Overall visits to Ipswich Museum up 30%
- Overall visits to the Mansion up 6%

COMMUNITY INVOLVMENT AT IPSWICH

- A 1680% increase in total numbers of volunteers
- A 500% increase in the time contributed

INVESTMENT IN MUSEUM BUILDINGS BY IPSWICH BOROUGH COUNCIL

- Nearly complete re-roofing of Christchurch Mansion - £260,000
- Large scale improvements to the Wolsey Gallery enabling it to continue to be a venue that can host works of national and international importance - £520,000
- Major internal and external works in Ipswich Museum - £150,000
- Complete repair and refurbishment of the High Street Exhibition Gallery - £275,000

GRANTS OBTAINED

The investment by IBC has been supplemented by securing external grants including:

- £250,000 for the new Egyptian Gallery

- With partnership funding from the British Museum the redisplay of the Nigerian collections
- c. £50,00 for collections Storage Improvements
- £320,000 raised towards purchase of the Art School
- £70,000 investment in the refurbishment of Ipswich Art School Victorian Wing
- £110,00 secured from the Heritage Lottery Fund for Skills for the Future (enabled trainee posts to help improve the care and management of the museum collections)

MAJOR ACQUISITIONS

- The Wickham Market Hoard of 850 Iron age Gold coins – enabled through £326, 000 of external grants
- A collection of paintings by Cedric Morris – enabled through £100,000 of external grants
- A hoard of 8 Roman gold coins or solidi buried in AD 406 during the reign of the emperor Honorius near Woodbridge
- An 7th century Anglo-Saxon gold and garnet pendant from Halesworth.
- The Glemsford Roman lantern similar to finds from Pompeii and therefore of national significance,
- The Holbrook horse harness pendants, a complete set of Roman military cavalry equipment – a very rare survival from Roman Britain

more clearly the positive impact of the merged service.

Major Achievements in Ipswich

The achievements listed on page 9 have all been made following a period of several years of falling visitor numbers before the creation of the merged museum service:

The way we need to view the Renaissance funding is to see it as a bonus which has allowed us to make huge advances in a number of areas. Parts of the service are completely transformed for the better. Those of you who saw the behind the scenes situation at Ipswich Museum will know that the working conditions have been dramatically improved and in terms of the main open office space it is difficult even to recognise it in comparison with the cramped and crowded spaces that previously existed. We still have a huge distance to travel in relation to

managing and storing the collections but we have made some major inroads and have also already secured some additional funding to carry out further targeted pieces of work that will see further significant improvements over the coming year. So now we in effect have to return to normal staffing levels but we start with the huge advantage that the Renaissance funding has brought us both in terms of the investment and the different ways of working.

So while we clearly are all very disappointed not to have been awarded a Major Grant from the Arts Council it is worth pausing for a moment to celebrate what we have achieved and recognise that museums in Ipswich are still and will remain far stronger than they were five years ago.

Peter Berridge
Museum Manager

Friends News

MEMBERSHIP SECRETARY'S REPORT

We welcome two new Corporate Member since the last Newsletter:-

The Ipswich High School.

The Dove Street Inn

There have been nine new memberships:

Miss J Allard

Mr & Mrs P Simmons

Mr & Mrs Finbow

Mr & Mrs T Sherwen

Mrs K Jones & Family

Mr & Mrs I Stuart-Box

Mr & Mrs F R Jay

Mrs S Barnes

Mr Anthony Cobbold

Luxembourg where, when a walk was too strenuous, she sat in a cafe and happily watched the world go by. On that occasion she was accompanied by her daughter Harriet.

As is the case with Societies such as ours, we often know little of a member's other interests. Eileen had been a good tennis player and, until last year, a regular golfer. She attended Glyndebourne and led scrabble lessons for the U3A in Hadleigh, where she was a Friend of the Choral Society. I was always delighted when she came on our trips and will remember her voice and characteristic laugh which could light up the room.

Alan Swerdlow

MANSION GUIDES REPORT

Special Tours at the Mansion

We have arranged two special interest tours for the winter months and two evening tours where you can enjoy the special atmosphere of the Mansion when it is closed to the public and enjoy a glass of wine afterwards.

If these Walls could Talk: Fri 21 Sept 2012 at 7 pm

Your guide will tell you the history of the house and highlight some of the collections as you pass through the rooms in the quiet of the evening .

Past Lives: Fri 2 Nov 2012 at 7pm

Take a meander through the rooms

at night as your guide introduces you to the past occupants of the house through portraits and items in the collection.

Evening tours £8 or £6.50 for Friends to include wine and light refreshments. Meet Bolton Lane entrance 6.45. [Booking essential](#) (01473 433681 or email ericab@btinternet.com

Curious Christchurch: Sat 10 Nov 2012 at 11 am: Ever wondered about ISSO? What about Frvgalatem sic ...or that thing on the dining table? We will walk around the Mansion trying to find some answers to frequently asked questions.

Wedding Gifts: Sat 24 Nov 2012 at 11 am Happy Ever After? We will have a quirky look at some of the items in the collection relating to marriage.

Day time tours £4 per head £3 Friends of Ipswich Museums– [booking required](#) as for evening tours.

Other Tours

The Mansion Guides are available every day until November to take visitors on a short tour of the house. If you would like to join these free tours, just turn up at 11 am Tuesday to Saturday or 2 pm on Sundays. Larger groups and full tours by arrangement – email ericab@btinternet.com or visit our website www.foim.org.uk.

If you or your club/society are interested in any aspect of the collection or the former occupants

of the Mansion, we will happily arrange a special tour for you starting at £4 per head, £5 for evening tours. Tours of the Museum in High Street can also be organized. Contact as before.

Mansion Guides' Outing



At Anglesea Abbey

On 30 May a group of guides went to Anglesea Abbey near Cambridge as part of their regular training sessions. They enjoyed excellent weather as they explored the extensive grounds and found many intriguing items to view in the house.

Margaret Catchpole

From 24 June – 8 July Eastern Angles put on a production of Margaret Catchpole at Bentwaters. Liz Latham gave some pre-performance talks on the subject at Christchurch Mansion.

Earlier the cast came to hear the story during a break in rehearsals

when the actors playing Margaret Catchpole and Elizabeth Cobbold were introduced to the portraits of their characters.

Liz and I attended a dress rehearsal of the play in return and thoroughly enjoyed the event. We were made very welcome by the cast and production team and were very interested to see some “behind the scenes” action. Even 250 years after she was born, the story Margaret Catchpole still captures the imagination.

Erica Burrows
Guides Co-ordinator

FROM OUR WEBMASTER

As you probably know I send out group emails to broadcast late breaking news or reminders of events. I usually only send out 3 or 4 a year so no one is inundated. I have over 100 email addresses but some of these are incorrect.

If you did not received the last group email (I sent it on 11 June) then either your email address is one of the incorrect ones or I have never had it. If you are one of these people and you do want to receive these group emails then please send me an email to contact@foim.org.uk. Please quote your membership name so I can link your details. With this method I will get accurate email addresses.

Jerry Latham

Ipswich Museum News

Jayne Austin updates us on our Ipswich Museums.

Ipswich Museum Development

The purchase of Ipswich Art School is nearing completion. It may even be complete by the time you read this. When the Ipswich Art School Gallery was launched 2 years ago we aimed to have raised the funds to buy the building within 2 years. We are really proud that we have been able to both raise the funds and buy the building within this timescale.

The artistic programme within the Ipswich Art School Gallery has been gathering momentum over the last 2 years, but we would now really like to improve this further. We have therefore established an artistic programming advisory group. This group will help to ensure that a high quality programme can continue to support emerging artists and ensure

that that a wide range of communities can access art through the gallery and the work on projects such as the Never Ending Mural.

Work has begun on the refurbishment of the Victorian Wing of the Ipswich Art School. This £100,000 project has support from Ipswich Borough Council, Pacitti Company, Suffolk County Council and funds from the Ipswich Art School fundraising campaign. Pacitti Company will become resident in the Wing for 3 years following the refurbishment. This performance arts company is one of the Arts Council's National Portfolio Organisations. The three rooms will be used as a place for artists to meet together, and as studio space in which artists can work, as well as office space. This will enable local communities to engage with a



range of national and international artists and provide support to local emerging artists. Pacitti Company will also be bringing the SPILL festival every other year to Ipswich, starting on 31 October this year. SPILL is already established in London and is now regarded the UK's premier artist-led

festival of live art and performance. It will add to and enhance the already vibrant and developing programme of arts festivals in Ipswich.

Tate visit

In April we hosted a visit from Tate. Caroline Collier, the Director with responsibility for national and international partnerships, and Marie Bak Mortensen, Manager of National Initiatives, were very interested in the developing plans for Christchurch Mansion and Ipswich Museum. They have committed to supporting the re-launch of the Wolsey Art Gallery in Christchurch Mansion as a focal point for the works of Constable. This will happen after the Mildenhall Great Dish exhibition to give us some time to test the new air conditioning system before the fine art works are reinstalled in the Gallery. Tate will also provide some long and short term loans of Constable works. They are also linking with Ipswich Museum as it develops, especially through the life and works of artists associated with the Ipswich Art School

The British Museum comes to Ipswich

The Mildenhall Great Dish will be arriving in Ipswich in July. It is the most famous object of the Mildenhall Treasure and is one of the finest examples of

silverware to survive from the late-Roman period. The Great Dish is symbolic of the strength of our partnership with the British Museum. The private view and launch 'The Mildenhall Great Dish and Treasures of Roman Suffolk' will take place on 25 July 2012. Andrew Burnett, Deputy Director of The British Museum, will be in attendance. It will then be on view to the public in the newly refurbished Wolsey Art Gallery from 26 July to the end October. A number of community events have been held in preparation for the Great Dish arriving, including a children's animation workshop held in Christchurch Mansion at Easter this year. The resulting animation can be viewed online at <http://www.youtube.com/watch?v=LsEnTfMhNHM>.

The Mildenhall Great Dish

© Trustees of the British Museum



The High Street Exhibition Gallery

For those readers who are unfamiliar with the High Street Gallery (HEG), it is a red brick building beside the Museum. Jayne Austin tell us about its redevelopment. A short historical note about the origins of the HEG has been added based on information in the Ipswich Art Club's Centenary Exhibition Catalogue.

Origins of the Gallery

Ipswich Fine Art Club started in 1874. By 1875 its exhibitions were so successful that the club began to consider establishing a permanent art gallery. Ipswich Museum was approached and it agreed to fund the High Street Exhibition Gallery, which was built by Messrs. Bennett for £1050. It was leased to the Art Club for 75 years at £11 per annum. The Gallery was finally opened by the Mayor of Ipswich, Mr D.H. Booth, on 13 March 1880.

The Gallery in Wartime

During the First World War the Club's collection of pictures was sold and the proceeds devoted to the Mayor's fund for the wounded and the gallery was given over to soldiers. When the soldiers left the gallery was hired out as an industrial centre and was used as

studios and workshops until 1919. The gallery was subsequently let to the Education Committee for use by the School of Art.

Art Club Gives up Lease

The 1920's saw a change in the Status of the club. The School of Art no longer wished to use the Gallery as it was having new buildings constructed. It was proposed by the club "That the Fine Art Club part with the remainder of the lease, hand over the gallery buildings provided that the Corporation undertook to carry on the annual exhibition of modern works of art on the lines at present in force and to allow the use of the Committee rooms from time to time without charge to members of the club".

CIMS and the HEG

By the time Colchester and Ipswich Museum Service took over the management of the Ipswich Museums, the High Street Exhibition Gallery was in a very poor state. The roof needed major building work and the space within the building was crammed full of items, including objects from the collections. CIMS sorted, documented and moved all collections out of the building to



much better storage spaces to protect them. Many other items were moved out too. This allowed Ipswich Borough Council to arrange for the necessary major repairs to be carried out. The building is now used to house parts of the Natural History and archive collections. The final room to be renovated was the lecture theatre. This was completed earlier this year.

Re-launch of the HEG


On 1 March the High Street Exhibition Gallery (HEG) was re-launched by Sir Trevor Nunn. The HEG will be used by both the Museum Service and New Wolsey Theatre in partnership and will enable an extension of the educational and community work carried out by both organisations.



This successful event was attended by a number of representatives from existing and potential funding bodies.

Jayne Austin
Development Manager

Coes - A world of Fashion
MENS • WOMENS • CONTEMPORARY
CASUAL • BUSINESS • LEISURE • SPORTS
FORMAL • CHILDRENS • SCHOOL
WEDDING & EVENINGWEAR HIRE
and so much more!



Coes Ipswich 20-28 Norwich Road IP1 2NH
Open Tues - Sat 9 am - 6 pm (Closed Mon) Customer car park at rear of shop
Tel Ipswich (01473) 256061 Fax (01473) 254531 email info@coes.co.uk
Menswear branches also at Beccles Dovercourt Felixstowe Lowestoft & Maldon

www.coes.co.uk

A date for your
Diary:
**The 2012
Friends'
Christmas
Party**
will be held on
WEDNESDAY
5 December

The New Victorian Room at Ipswich Museum

David Jones tells us how local Victorian items have been selected to create a new display in the old Egyptian Gallery in Ipswich Museum.

Both the first Museum (in Museum St) and the present Museum were themselves in a sense a mighty Victorian exhibit. The Main Hall celebrates the Victorian discovery of the natural world, and the World Cultures gallery was formed against the background of Imperial expansion.

The new Victorian local history display at Ipswich Museum covers the period from the middle of the Napoleonic war in 1800 to the run up to the First World war in 1914, and it is a demonstration of the strength of the collection that it contains so much from the first half of the nineteenth century and the beginning of Victoria's reign. As well as a few old favourites now put in a proper context the majority of the 136 specimens (about 25% of our Victorian collection) have never been displayed before and some have been researched and identified for the first time.

The centrepiece is the huge contemporary model of the Royal George, acquired for a patriotic display in the previous Town Hall. It

is a fitting introduction to a century in which Britain ruled the waves.

The rest of the display covers the following themes:

Crime and Punishment

The Victorian Museum and Victorian Science

Victorian Engineering

The Victorian Corner shop

Victorian stained glass



The Royal George

Crime and Punishment

The early part of the nineteenth century was one of great social unrest and political turmoil. The legal system was brutal and inefficient as is vividly brought home by the ducking stool, scolds bridle and whipping post.

The Victorian Museum and Victorian Science

The Reverend Professor Henslow, the founder of this museum, saw science, knowledge and the spreading of scientific knowledge as the solution to these problems. Amongst his innovations was supplying the public galleries of the museum with microscopes for use by the visitor, an amazing facility in the 1850s. You can see



The Victorian Science Case and the Victorian Corner Shop Case

these microscopes on display here, along with other equipment designed to demonstrate electricity and sound.

Victorian Engineering

Ipswich as an engineering town needed an educated workforce and the wealth provided by its engineering firms financed developments like the High Street museum. About half of our very important group of Ransomes models from the 1850s is now displayed. They were made for the firm's team of salesmen who travelled to worldwide trade fairs. They reflect the period in which Ipswich engineers helped transform the world through advances in agriculture, dams and railways.

The Victorian Corner shop

Wealth and jobs supported by the engineering boom led to a major growth in both the population and the size of the town. When the residents were no longer able to

walk to the town centre, markets and corner shops sprang up in all the new areas. Street signs and advertising helped create a colourful new visual world of popular art.

Victorian stained glass

Nearly all of 300 or so parish churches in Suffolk were restored or altered in some way during the height of the Victorian Gothic revival. The Ipswich based Diocesan architect R. M. Phipson was responsible for over a 100 Suffolk churches himself and local craftsmen and carvers built careers around working for the church. The museum has important but little known holdings connected with this movement and hence for the care of historic churches across the county. Here we are able to put the stained glass on show attractively back lit with natural light.

David Jones

Keeper of Human History

Roman Coin Hoard from Woodbridge

Philip Wise describes the gold coins found in Woodbridge which were recently purchased with the help of the Friends.



This coin hoard was found near Woodbridge on two occasions in 2009 and 2010. It consists of 16 silver coins, or denarii. The earliest was issued by Vespasian in about AD 77 and the latest by Marcus Aurelius in AD 171-2. However, the undated but lifetime issue of Faustina II could have been issued as late as AD 176. The emperors and their wives represented in the hoard are Vespasian (1), Domitian (1), Trajan (4), Hadrian (3), Sabrina (wife of Hadrian, 1), Antonius Pius (2), Faustina I (wife of Antonius

Pius, 1), Marcus Aurelius (1) and Faustina II (wife of Marcus Aurelius, 1). The hoard also includes one forgery made in the reign of the emperor Domitian (AD 81-96). The date range of the coins that make up this hoard is typical of hoards of the mid to late second century AD. The purchase of this hoard was generously supported by the Friends of the Ipswich Museums.

Philip Wise
Heritage Manager



For a more personal approach to all of your business & personal insurance needs

Tel: **0844 573 9390**

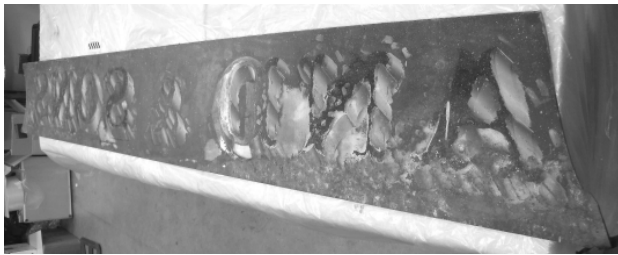
e-mail: info@ryan-group.co.uk

Offices at 21-23 Princes Street & Crane Hall, London Road, Ipswich

www.ryan-group.co.uk

Conservation Corner—The new 19th Century Gallery in Ipswich Museum

Bob Entwistle tells us about the work done by volunteers to prepare exhibits for the new gallery.



The shop sign before & after conservation

For the past few months volunteers have been working in the conservation lab on the new 19th century gallery in Ipswich Museum. The gallery focuses on Ipswich and shows glimpses of scientific and industrial advances, tells the story of law and order in Ipswich and also has a 19th shop front plus the Royal George ship model originally displayed in the Mansion.

The Royal George

The Royal George has been transported back from Colchester storage to once again go on display in Ipswich. Transporting the Royal George, and I've done it 3 times now, is always a conservation challenge. Re-erecting its case and getting the large pieces of plate glass into place without breaking them is another challenge. However all was accomplished successfully and it now stands in the middle of the gallery.

Kelvin Thatcher, a ship model conservator, and I cleaned the dust off the ship and replaced broken

rigging. I then cast one of the cannons and made replacements for all those cannons that were missing, (I dated all the replacements). I placed the mould inside the hull of the ship so a future conservator can do the same as I did. You can tell the replacements, they look clean!

The broad display title enabled us to get as many things from storage as we could and put them on display. These included cash registers, signs, railway engines, traction engines, microscopes, models etc. Many of these items had not been accessioned because they had actually been used in the museum during lectures in the 19th Century.

A Glass Shop Sign

Of a particular note is a large glass shop sign saying "Brand and Son". This sign was stored in a barn for many years. It was broken and covered in dirt. Much of the gilding had also been lost. Volunteers cleaned the glass, and I



consolidated the gilding. A large frame was made into which all the pieces were fixed and a black backing added.

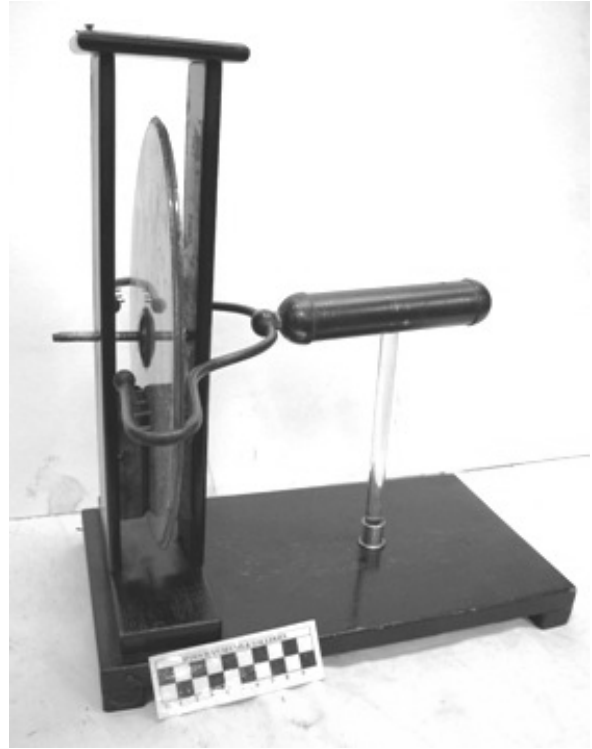
and other items

Volunteer Steve Taylor worked on many items but also particularly a large Bunsen burner. Steve and I dismantled the burner and carefully cleaned every piece of metal and reattached all the peeling gutta percha. It was a long job considering the years of grime and corrosion on the surface, but the result is great. Thanks Steve.

Volunteer Stella Wolfe has given up a day a week to the project. She cleaned and polished many objects including a slide box, cash register and a few signs. The most famous item was the original sign from the Halberd pub, now McGinty's. She carefully cleaned the paintwork and then coated the surface with a protective layer of microcrystalline wax.

Volunteer Kath Daniel, braved a frozen shoulder to clean a scientific balance for display. The balance

was the one originally used in the lab, we are now digital. So an ex lab object has itself become a part of the museum's history, which is very fitting.



Amongst the scientific instruments prepared for display was a Winter friction machine. This was dismantled by volunteer Ray Atkinson, and cleaned. Missing parts such as a friction pad and an electrode were made out of oddments in the lab and cast in resin.

Ben Corcoran worked on the project with me for many months cleaning the weird and wonderful; shop scales and the now infamous bacon slicer from the Co-op. Infamous because it took us days to get it apart. Screws nuts and bolts had seized, and what they were seized with left little to the

imagination. I don't think it had been cleaned before being given to the museum.

I was especially impressed with Ben's work on the Grasshopper pub sign. The sign had been painted on tin and was flaking with large areas missing. Ben cleaned and consolidated the paint, and then painted in the missing areas to show the sign as being complete.

I would like to thank all the above volunteers. I would also like to thank all the volunteers who have worked with me in the lab for the past 24 years.

Without their help and encouragement, we would have been unable to stage many of our

exhibitions.

I would also like to mention volunteers (many of whom are Friends): John Mann, Eileen Clarke, Sheila Brooks, Chris Cushing, Len Lanigan, Steve Duhm, Joan Munns, Mary Southwood, Joanne Blackburn, Jessica Read, and many others.

I have also totted up the number of work experience young people who have worked with me over the years. It comes to over 40. Some came and never left, such as Ben and Carrie. Others went on to study history, art, Egyptology and conservation.

Bob Entwistle
Senior Conservator



Recommended by friends


Ipswich High School
for Girls aged 3-18

Open Days
Saturday 6th Oct , 10am – 1pm,
Whole School
Wednesday 17th Oct , 7.30pm
Sixth Form
Friday 23rd Nov , 10am – 1pm
Whole School

For further information
www.ipswichhighschool.co.uk
01473 780201
Woolverstone, Suffolk IP9 1AZ

Top GCSE and A level results 2011
'Outstanding School'
across all categories, ISI Inspection 2011

Museums in the Community: Outreach Services

The Outreach Team continue to work on the Making Memories (part of Stories of the World). Oral Historian Gloria Lin is working with the Colchester and Ipswich Chinese communities to record their stories about life and responses to objects. The recordings will feature in the touring 'China in the East' exhibition, which will be displayed in Ipswich from October 2012.

The 'Curry and Culture' project with the Bangladeshi Support Centre is continuing. The Museum Service has provided oral history interviewing training for the project volunteers and is running a four-week craft project with the Ladies Art Club. Links have also been established with the Ipswich Polish community and



Outside Nanjing Museum in China

the Outreach team toured the new Polish Community Centre which is currently being renovated.

The Outreach Team



The Linden School of Music

GERALDINE & FRIENDS
SINGING GROUP

PIANOFORTE/KEYBOARDS
SINGING
CLASSICAL GUITAR

Specialist in teaching Adults and Young Singers
Young Pianists considered from 5 years of age

Mrs Geraldine Stevenson-Patey

36 High Hall Close, Trimley St. Martin
Felixstowe, IP11 0TJ ☎ 01394 275125

Member of the Incorporated Society of Musicians

Learning and Events in Ipswich

Young children enjoy exploring in the Museum, while the Art School includes a small exhibition of pupils work inspired by the Saatchi exhibition.



New themed 'Gallery Boxes' have been introduced at Ipswich Museum to support self-led nursery group visits. Each box contains a mixture of handling objects, a story book, simple craft activity, trail, torches and magnifying glasses – to encourage active exploration of the museum by these young visitors and their carers. These 'Gallery Boxes' have been developed to provide a sustainable and flexible offer for increasing number of nursery group visits. They include many resources and activities created and trialled in monthly Mini Mammoth sessions.

To broaden the opportunities for

active engagement by secondary schools with exhibitions in Ipswich Art School, Year 10 pupils across Suffolk are being invited to enter this competition to win the unique opportunity to see their artwork displayed alongside Saatchi works in the next exhibition. Inspired by the Saatchi works, students will be challenged to create a 2D or sculptural piece of work exploring the re-use of materials on the theme 'Lost and Found'. Winning entries will be displayed from mid-June to the end of August.

Caroline Hammer,
Senior Learning Officer

Staff News

Farewell to some Old Friends

The Friends are sad to see some long serving members of staff leaving at the end of May under the voluntary redundancy scheme. We are saying goodbye to Marlene Moyes who for many years was the mainstay of Christchurch Mansion as head attendant then Visitor Services Officer. As her role expanded she encompassed all the museum sites as Gallery Services Manager. Altogether, she has dedicated 22 years service to the Ipswich Museums, starting in 1990 as a museum assistant. Marlene has been a great source of knowledgeable advice and practical help to the Friends and she will be much missed.

Maria Suttle started work for Ipswich Borough Council at the Corn Exchange in 1984 as an usherette, becoming a museum assistant and later duty officer in 1994 – 28 years in total. She has been a great asset to the Museum Service and the Friends, always helping at our events and supporting the talks and lectures. We hope she and Roy, who has long been a guide at the Mansion and is a past treasurer of the Friends, will continue to be involved. Her quiet persuasion in selling raffle tickets is legendary! In addition to his other duties,

Howard King was the member of staff responsible for booking tours of the Mansion and has always been very enthusiastic in promoting and publicising the guided tours. He also raises funds by giving outside talks to organizations on behalf of the Friends. During the 10 years he has been with the Museum Service, he has been a valuable source of knowledge to the guides, and we hope he will continue to support us.

We also say goodbye to Maggi Hayward who has been such a help in our publicity and design projects, as well as Barry Malster and Emma Cracknell.

We send them all our very best wishes for the future and hope we will continue to see them at Friends events.

Erica Burrows

Sylvia Cox Wins Award

Sylvia was one of four young people given the opportunity to work in Suffolk museums under a scheme funded with a Heritage Lottery Fund (HLF) grant of £100,000 plus partnership funding from Suffolk County Council.

Since last Summer Sylvia has been a Documentation Trainee in Ipswich Museum (see p.23 Summer 2011



Newsletter) and did a part-time secondment in Felixstowe Museum to broaden her experience. In our Spring Newsletter we read about the work she has been doing on medieval timbers and children's book illustrations.

Sylvia has now won a rare Fellowship in Collections Management at the University of East Anglia's Sainsbury Centre, starting in October 2012. Sylvia will spend a year working in the Collections Team at the Sainsbury Centre for Visual Arts (SCVA), and studying for an MA in Museum Studies. The SCVA will cover the full cost of the MA fees and provide a bursary for the year.

Sylvia commented, "I just want to thank CIMS staff for their amazing support and guidance over the past year - I couldn't have done it without them. It

does really go to show what a fantastic initiative it is. I feel incredibly lucky to have had the traineeship at CIMS."

GET HOOKED ON CARAVANS WITH



SHARMAN CARAVANS LTD
(EST 1974)

For All Your Caravanning
• REPAIRS • SALES
• SERVICING • ACCESSORIES
• NEW & USED CARAVANS
LUNAR MAIN DEALER

View all our stock on our website
www.sharmancaravans.co.uk

01473 713284/728238

The Caravan Centre, Colchester Rd, Ipswich



BRAND NEW SHOP

Ipswich Town Football Archive: Volunteering opportunities

Jayne Austin tells us about the Ipswich Football Club Archive.



Colchester and Ipswich Museums (CIMS) is supporting this exciting new project, which will catalogue and develop a curation plan for the extensive archive of football memorabilia available to Ipswich Town Football Club (ITFC) by Autumn 2012.

The new catalogue will then be used to select items as the basis for a range of integrated local activities that promote learning and encourage and support community engagement building on the experience and strong community links of both the ITFC and the ITFC Charitable Trust (ITFC-CT). In addition the project will support the creation of a permanent exhibition of items from the archive to ensure public access. These will be made

available in identified locations throughout the Portman Road stadium, including a new learning facility established for the ITFC-CT within the stadium.

This project follows CIMS exhibition last year in Ipswich Town Hall that celebrated the 30th anniversary of Ipswich Town Football Club's UEFA Cup win. The Museum Service is therefore supporting it by making all of the information and images that we compiled during our research for the exhibition available to this project.

The FOIM also have the opportunity to lend your support through a number of volunteering opportunities that have arisen within the project. These include: working on cataloguing the archive; working with young people on learning activities; undertaking reminiscence work including supporting and recording of oral histories; exhibition set up and support. Digitised artefacts, oral histories and selected items from the archive will remain within the public domain, for example through the ITFC Charitable Trust web site.

The whole project will run until 31 August 2013 and is based at the ITFC Charitable Trust offices within

the Club's Portman Road stadium complex. Oakmere Solutions Ltd is leading the project, which is directed by the ITFC Charitable Trust and supported by the Heritage Lottery Fund (HLF) and the Ipswich Town Football Club.

Further Information

To find out more about the project, including getting involved in volunteering contact:

Dr Peter Funnell, Project Director,
Ipswich Town Football Archive
Project, ITFC Charitable Trust,
Portman Road, Ipswich,

Suffolk, IP1 2DA

E: peter@oakmeresolutions.co.uk

T: 07733 974487

W: <http://www.itfccharitabletrust.org.uk/>

<http://www.itfc.co.uk/page/Home>

<http://www.oakmeresolutions.co.uk/>

Jayne Austin
Collections Manager

Chinese Exhibition at Colchester Castle

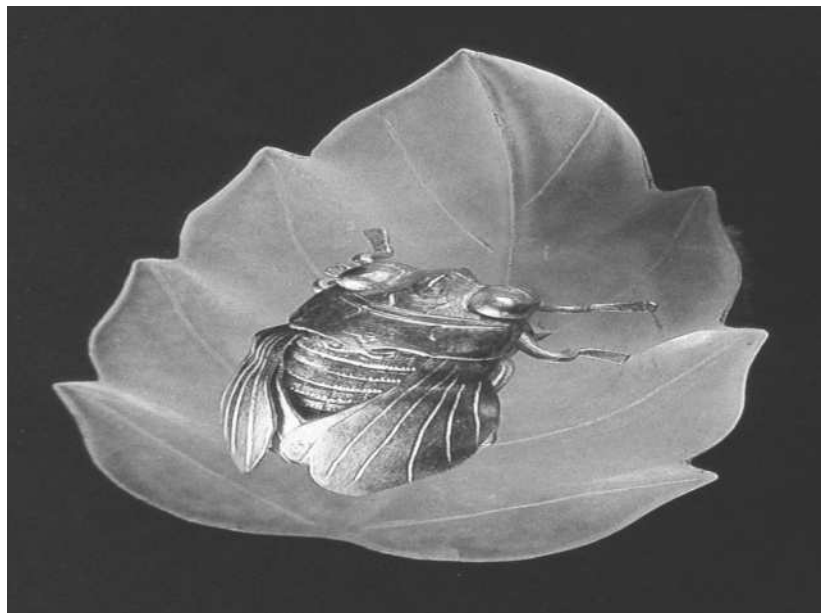
From Saturday 30 June 2012 to 7 January 2013—free entry if you show your FOIM membership card

This exhibition showcases seventy treasures from Nanjing Museum, the second largest museum in China. The exhibition was made possible by the long term affiliation between Essex County Council and Jiangsu Provincial Government. The exhibition covers 4500 years of Chinese history.

Exhibits include a 2000 year old, life size jade suit from the tombs of the Han Dynasty rulers, an exquisite gold cicada sitting on a jade leaf (pictured) worn by a Ming Princess nearly 600 years ago and the luxury items and ornaments that adorned the palace of the last of the Imperial families

as the tumult of the twentieth century changed China for ever.

Among animal representations in the exhibition are a delicate jade mouse, a pottery pig and three wise monkeys immortalised on a lacquer plate.



Colchester Castle Re-development Update

The Colchester Castle Redevelopment Project is progressing well. The design layout has been finalised and the building works tender process will get underway in June. The current focus is on the interactive and audio-visual display elements. The user forums and PORTAL, the museum's access advisory group continue to give regular feedback as the plans develop.

The design and content of the pilot wider heritage interpretation panels for the Balcerne Gate, Duncan's Gate and the Roman Theatre are now going into production and will be installed by early August.

The Castle will close to the public on 7 January 2013 and then be emptied of its contents. It will be temporarily re-opened for four weeks from Saturday 23 March to Sunday 21 April 2013 so that visitors can see the Castle as an empty building for the first time in seventy years. The Castle will also be available for hire for a variety of functions during this period.

The Norman Connections conference at Norwich Castle in May provided very useful discussions around the interpretation of Norman castles. There will be a seminar in Colchester Castle next March or April during the period it is empty which will give the opportunity for an in depth analysis by the leading experts in the field. This analysis will inform how we interpret the Castle to visitors.

Tom Hodgson,
Project Manager



Membership Details

Membership rates are:

Joint/Household	£15
Single	£12
Student (under 25)	£3
Corporate	£100

These are the minimum fees. We would not dream of preventing anyone paying more. A membership form can be downloaded from our website or contact our Membership Secretary; Barbara Cole, 35 Pownall Road, Ipswich IP3 0DN, 01473 287716.

Those interested in becoming corporate members should contact us direct via the website.

Members have free entry to Colchester Castle Museum.

Membership as a Gift

All you have to do is send the appropriate subscription (payable to FOIM) together with contact details of the recipient to Jerry Latham, who will prepare a gift pack for you to send.

The FoIM Committee 2012-2013

President::	Gay Strutt
Vice President:	Paul Bruce
Chairman:	Alan Swerdlow 01394 380044 e-mail: alan@whr.demon.co.uk
Vice-Chairman:	Jerry Latham
Secretary:	Delly Newson
Treasurer:	Peter Stockdale
Membership Secretary:	Barbara Cole, 35 Pownall Road, Ipswich IP3 0DN 01473 287716
Newsletter Editor:	Mary Halliwell, e-mail: j.halliwell165@btinternet.com
Guides Representative:	Erica Burrows
Members:	David Kergon, Sheila Brooks Kathleen Daniel
Ipswich Arts Association	
Representative:	Ferial Evans Rogers
Ipswich Society	
Representative:	Ken Wilson
Ex-officio Member:	Peter Berridge, Museum Service Manager

All members of the Committee can be contacted via
our Website www.foim.org.uk
or c/o Ipswich Museum, High Street, Ipswich IP1 3QH

Our Corporate Members

Arlingtons Brasserie	Ipswich School
Barnes Construction	Ipswich High School
Belvedere Reproductions	The Linden School of Music
W D Coe Ltd.	NFU Mutual
The Dove Street Inn	Ryan Insurance Group
Dummett Copp	Sharman Caravans Ltd
Elmy Cycles	Stan Gaskin
J M Finn & Co	Suffolk New College
Jimmy's Farm	Titchmarsh & Goodwin
Ipswich Building Society	Watson & Hillhouse Ltd

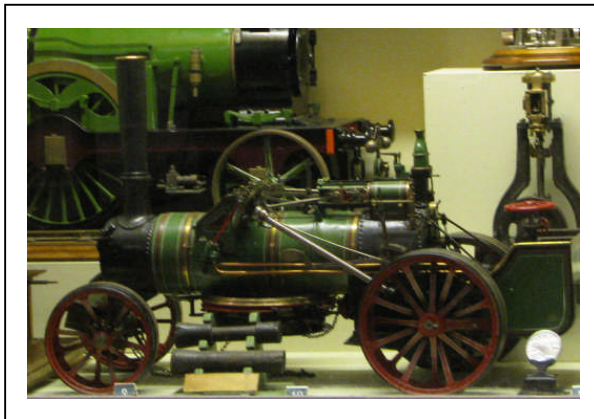
In this issue:



Would you like to help catalogue football memorabilia? - page 28



Treasures of China in Colchester Castle-page 29



The new Victorian Gallery at the Museum - pages 18 and 21



The Great Mildenhall Dish in the refurbished Wolsey Gallery—page 15

plus Friends activities and more museum news

www.foim.org.uk

www.facebook.com/ipswichmuseums

We welcome new members to help us support our excellent Ipswich Museums. Details of membership are given on page 30

We use the website to advertise events which are notified too late to be printed in the Newsletter.