

Newsletter SUMMER 2015



Above: Lady's coat dress from 1815
Right: Trooper Smith's uniform worn
at the Battle of Waterloo in 1815
(see page 16)

we look forward

FoIM

to promote the past

The Friends of the Ipswich Museums Newsletter

is published three times a year and distributed free to all members. The FoIM was set up in 1934 to support the work and development of the Ipswich Museums: Ipswich Museum in the High Street, Christchurch Mansion and the Ipswich Art School Gallery. Since April 2007 the Ipswich Museums have been managed as part of the Colchester and Ipswich Museum Service (CIMS).

Friends continue to provide financial support to the Ipswich Museums as well as acting as volunteers. The Friends run outings, talks and other events for their members.

The Friends provide guided tours of the Mansion and Museum, including free *Peeps into the Past* at the Mansion throughout most of the year. Tours for groups can be booked by contacting the Mansion (01473 433554).

FoIM is a member of the British Association of Friends of Museums, the Ipswich Arts Association and the Suffolk Chamber of Commerce.

Contributions to the Autumn 2015 Newsletter should be sent to the editor by 1 September 2015.

Have you visited our website www.foim.org.uk? We use our website to advertise events notified too late to be included in the Newsletter.

Contents

Editor's Notes	3
Chairman's Letter	4
Bill Seaman's Column	6
Aspire Events	7
Friends' Diary	8
Friends' News.....	9
IWM VISIT	12
Carole Jones.....	14
Suffolk Museums Competition--	15
Conservation Corner	16
Recent Acquisitions	20
Our Artist Ranger.....	21
AGM Highlights	22
Corporate Members	22
The Committee	23
Membership Information.....	23

Advertisements: 3,7,14,15,17,19,21

Our advertisements are all from corporate members, please support them.

Cover Picture: Two of the exhibits from the exhibition at the Mansion celebrating the Battle of Waterloo

we look forward



www.foim.org.uk

to support the past



FoIM is a subscribing member of the Ipswich Arts Association, please visit their website www.ipswich-arts.org.uk for further information.

Editor's Notes

Following the request for help sent out with the last newsletter, I am pleased to say Sally Kitt is now helping me to produce the newsletter. Although very new to the job, she has already contributed to this issue.

I was delighted to receive so many articles for this newsletter. Bill Seaman tells us how well the Aspire Programme is going.

Bob Entwistle tells us about the preparations for the Waterloo Exhibition on display upstairs in the Mansion. Many of the items were prepared for display by volunteers. Some work on the uniforms by a professional conservator was paid for by the Friends.

We hear about the trip to the Imperial War Museum in February and the Summer Party in June.

We will be trying out a new venue for lunchtime talks. The Seckford Golf Club offers good parking and easy access. The first talk will be about Alfred Munnings and will take place in October.

Elsewhere in the newsletter we have a message from our new President, Lady Deben. The Ipswich Borough

Councillor with special interest in the Museum Service, Carole Jones, and the newly appointed Artist Ranger, Lisa Temple-Cox, introduce themselves.

For those who were unable to attend the AGM I have included a brief report on page 22

Mary Halliwell

Suffolk New College
Proud to be at your service

93% of our students **have either continued in education or secured employment**

Create the future YOU want!

Suffolk New College offers a wide range of full and part time academic and work related training opportunities including vocational programmes, A levels and Apprenticeships in an adult learning environment with state-of-the-art equipment and resources located in central Ipswich.

01473 382200 • info@suffolk.ac.uk • www.suffolk.ac.uk

Administration
AS & A levels
Beauty Therapy • Business
Childcare • Construction
Electronic Engineering
Engineering
Foundation Learning
Hairdressing
Health & Social care
Hospitality & Catering
IT • Media
Motor Vehicle
Music
Performing Arts
Public Services
Sport
Technical Theatre
Production
Travel & Tourism
Visual Arts

Chairman's Letter

Thank you to all who attended our AGM on 14th April. The Hon Gay Strutt served as our President for many years but decided the time had come to retire. I would like to thank her personally, and on behalf of the Friends, for being such a support to us and hope we will still see her at Friends' events.

I am delighted that Penny, Lady Deben, has agreed to become FoIM President. Lady Deben has been active in introducing new members for the last few years as well as having interests in Friends' groups at various London museums, and we look forward to a rewarding association. (See Lady Deben's message on page 10.)

Gordon Mole from IBC gave us a room by room vision of the High Street redevelopment proposal, and the reaction from Members was very positive. There is, of course, a long way to go yet but FoIM will support it where we can.

Arts Council Grant

The Museum Service has been awarded approximately £600,000 funding from the Arts Council over the next three years. An artist has been appointed on a year's contract to plan future exhibitions (see page 21).

A New Exhibition at the Art School

Drawing on the rainbow featured in Constable's **Salisbury Cathedral from the Meadows**, an exhibition called

Colours will be showing in the Art School. With seven colours of the rainbow and seven rooms, each room will feature new work and works from the Ipswich collection reflecting the rainbow colours.

Displayed at the Mansion

FoIM have once again funded a costume display in the Mansion. This time, for the 200th anniversary of the Battle of Waterloo, we have displayed some of the large collection of military uniforms and weaponry. Bob Entwistle and Anna Todd have conserved and prepared the costumes for display with the help of volunteers, including Glynis Brannon, a member of the Friends who was a college lecturer in fashion and textiles. I particularly like the soldier from Cromwell's Army displayed in the Green Room. Are the two dents in his metal breastplate the result of being hit by musket balls? The complete uniform of Trooper Smith, who fought at the Battle of Waterloo, is on display in the Library, and helmets, drums, banners, tunics and weapons are in various rooms of the Mansion.

The Wolsey Gallery

Since early June, the ongoing year of Constable celebrates the 200th anniversary of Constable's Garden paintings with further displays and loans on show in the Wolsey Gallery.

The last phase of the Aspire programme

sees another re-hang in the Wolsey Gallery featuring artists influenced by Constable – including Lucien Freud. Friends are invited to a special viewing on 14 Sept with a talk by Aspire co-ordinator Caleb Howgego.

Filming

A film project on migration is being produced by a group of ladies from Volunteering Matters. It deals with social change and migration in Ipswich and Suffolk since Anglo-Saxon times. I spent a morning with the group in May talking about the Mansion in the context of migration (e.g. the Huguenots) and the group have kindly donated a sum to FoIM as a result. I look forward to the finished production.

Activities and Events

Paul Bruce has again organized two lunchtime talks. Our last few talks have been at the Galley in Woodbridge and we have had some excellent lunches there. However, the steep stairway to the restaurant has been a barrier for some members and so we have looked at alternative venues. As a result, the next two talks will be at Seckford Hall Golf Club, which has easy access and ample car parking, so I hope many of you will join us for the first one in October. An evening talk will take place at the Mansion on 14 March 2016 to allow people who are unable to attend during the day to come along. We are lucky to have Sarah Medlam, Curator Emeritus of the V&A as our speaker and more details will be in the next

newsletter.

The ever-enterprising team of Mansion guides has come up with the idea of a gift voucher offering a private tour of the Mansion. This can be bought as a gift for a group of up to four people, and will include one copy of the Mansion brochure as part of the package. Pick up a form in the Mansion or see the advertisement on page 11 for details.

A special themed tour about eighteenth century portraits and porcelain is being led by Joan Munns for Heritage weekend. See diary for details.

Don't forget that we offer gift packages of FoIM membership too; these also include a complementary tour for the recipient as well as all the benefits of membership.

We've only just had a successful summer party so it seems a bit early to be thinking of the Christmas Party on 2 Dec, but this is always a very pleasant occasion with plenty of food and drink in the special atmosphere of the Mansion at night. I am sure those who attended last year will be pleased to hear that the Ipswich Chamber Choir, who entertained us so well last year, will be returning with conductor Christopher Borrett.

**Erica Burrows,
Chairman**

☎ 01473 785152, or email
ericab@btinternet.com

Bill Seaman's Column

This has been a busy few months for the museums with much happening across the service. **Constable's Salisbury Cathedral from the Meadows** continues to be a wonderful draw for Christchurch Mansion with over 10,000 visitors seeing the painting in the first three months – a 230% lift on the same time last year.

The Gardens' exhibition at Christchurch Mansion formally opened on 11 June. It celebrates the bicentenary of the painting of 'Golding Constable's Kitchen Garden' and 'Vegetable Garden' in 1815 which are arguably amongst Constable's most famous works. The exhibition includes loans of garden pictures from Tate, the Victoria and Albert Museum and the Fitzwilliam Museum, Cambridge. The launch was timed to coincide with Constable's birthday and a national seminar on Constable held in Ipswich for the partners on the Aspire project – National Museum of Wales, National Museum of Scotland, Tate and of course Salisbury Museum. The seminar included lectures and visits including a trip to Flatford Mill to confirm Ipswich's status as being the gateway to 'Constable Country'. The partners were impressed with Ipswich's museums and collections and the high impact that the painting has had on visits to the Mansion. As a result we have been encouraged to request the loan of further high profile works from the national collections.

The re-hang of the Wolsey Art Gallery for the Gardens Exhibition has meant that thanks to the generous support of

the Friends, several of the Gainsborough landscape paintings can be re-glazed with non-reflective glass. This will make an enormous difference to the appreciation of these works and it is hoped that we can undertake a programme of re-glazing the art collection over future months.

Friends may have noticed a fine display of uniforms and arms in the Mansion to coincide with the bicentenary of the Battle of Waterloo. With the support of Friends these fine items are in a fitting setting and generating considerable interest from visitors.

In the Art School the Emotions exhibition focussing on single or small groups of objects from the collections was met with intrigue and fascination and visitor feedback will inform the next exhibition called Colours. Using the rich and diverse museum collections, the displays take the rainbow colours inspired by **Salisbury Cathedral from the Meadows** to colour-theme each of the small galleries off the central octagon. This exhibition opening on 20th June promises to be a fascinating opportunity to see a number of the seldom displayed objects in Ipswich's collection.

And finally to let you know that we continue to recruit much needed new team members to the service as the new structure takes shape. More to follow when the full team is in place.

Bill Seaman
CIMS Museum Manager

More Aspire Projects Events

A 200th Anniversary Cake



John Constable painted his parents' gardens 200 years ago. The current exhibition in the Wolsey Gallery celebrates this event with the loan of a number of additional Constable paintings of our local area.

On Constable's birthday, 11 June, the Mayor of Ipswich visited Christchurch Mansion to watch "John Constable" cut a cake to celebrate the paintings.

Visitors to Flatford



Also on 11 June a party from the Tate, the Welsh National Museum and Salisbury Museums paid a visit to Flatford as part of the Aspire programme. They viewed the sites from which Constable painted several of his local paintings, including our own "The Mill Stream".

Aspire



ArtFund

TATE

BELVEDERE POLISHERS

Does your table/furniture have
cup marks and other unsightly
signs of wear?

**Call Belvedere today and ask
about their FREE service.**

- ☐ Competitive prices
- ☐ Insurance work
- ☐ Furniture repairs
- ☐ Collection and delivery
- ☐ Furniture designers
and manufacturers

Guarantee

If for any reason you are not happy with the
job we have done then we will do it again free of
charge for you and give you half the cost back.

Tel: 01473 807719

11 Dove Street, Ipswich IP4 1NG
www.belvedere-reproductions.co.uk

Friends' Diary

When booking events please include EITHER your e-mail address
OR a stamped self addressed envelope for our reply

Date	Event	Booking & details
Tues-Suns until 1 Nov	"A Peep into the Past" : daily short tours of the Mansion at 11 am weekdays, 2pm Sundays	Just turn up, not suitable for parties, donations welcome
12 & 13 Sept (Heritage Weekend)	'Portraits and Porcelain - A glimpse into the 18th century' at Christchurch Mansion led by Mansion Guide, Joan Munns Saturday @ 2 pm, Sunday @ 3pm free tour – donations welcome	Book at the Mansion (01473 433554) or email ericab@btinternet.com
Tues 15 Sept at 6.30 pm	Private view with presentation for FoIM of final part of the Aspire programme in the Wolsey Gallery featuring artists influenced by John Constable. (details on Page 9)	Book at the Mansion (01473 433554) or email ericab@btinternet.com
16-19 Sept 2015	Friends' Black Country Visit	For details see Website, book by end of July
Wed 28 Oct 2015	Lunchtime talk at Seckford Golf Club. Speaker: Marcia Whiting, "Alfred Munnings" £16 including two course set lunch	Booking form enclosed
Wed 2 Dec 2015	Friends Christmas Party at Mansion with Ipswich Chamber Choir	Booking form with next newsletter
Wed 24 Feb 2016	Lunchtime talk at Seckford Golf Club Speaker: Carrie Willis telling us about conservation of a puzzle jug. £16 including two course set lunch	Booking form with next newsletter
Wed 14 March 2016	Evening Talk at Mansion by Sarah Medlam, Emeritus Curator V&A , on the new European Galleries	Booking form with next newsletter
Wed 13 July 2016	Quiz Night with Supper at Seckford Golf Club	Details next newsletter

Friends' News

New Members

We are very pleased to welcome the following new members:

Mrs P Ayers
Mr & Mrs P Lefort
Mr B Pawsey
Ms. D Johnston
Mrs S Barnes
Mrs M Cooper
Mrs C Cowper
Mr R Wilson
Mrs M Camplin & Mr T Dickings
Mr & Mrs I Hardy
Ms C Mason
Dr F Nesling

Jean Attenborrow

Future Events

FoIM Private View In Wolsey Gallery Tues 15 Sept

The Friends are invited to a Private View of the third and final stage of the Aspire Programme. Caleb Howgego will give a short talk about the new display in the Wolsey Gallery. Constable's "Salisbury Cathedral from the Meadows" will be surrounded by paintings by artists, including Lucien Freud, who were strongly influenced by Constable's work.

Friends' Black Country Visit 16-19 Sept 2015

This visit was advertised in our Spring newsletter. There is still room for a few more people. If you are interested in

joining the party, you should contact Jean Attenborrow as soon as possible. A booking form can be downloaded from our website.

Lunchtime talks at Seckford Golf Club

We will be trying out a new venue for our lunch time talks next season. The first will be given by Marcia Whiting, Assistant Curator and Researcher at Munnings Art Museum, Dedham. It will take place on Wed 28 October. A booking form for this talk is included with this newsletter. The cost will be £16 including a two course set lunch.

A second talk by Carrie Willis, who is a member of the Ipswich Museum Staff, will take place at the same venue on Wed 24 Feb. Carrie will tell us how she conserved a puzzle jug accidentally broken by a visitor. A booking form for this talk will be circulated with the Autumn Newsletter.

Friends' Christmas Party

The 2015 Christmas Party is booked for Weds 2 Dec at the Mansion. Tickets will be £14 including supper and drinks and entertainment by Ipswich Chamber Choir. A booking form for this event will be circulated with the Autumn Newsletter

Events planned for 2016

Evening Talk: Mon 14th March 2016

Sarah Medlam, Emeritus Curator V&A, will talk about the new European Galleries at the V&A

A Quiz Night

To be held at Seckford Golf Club on 13 July 2016 .

Tea with our New President

In early June, Erica, our Chairman, arranged an informal meeting for Committee members and Lady Deben (Penny Gummer). Tea was enjoyed in Erica's garden.

A Message from Lady Deben

I feel very honoured to have been invited to take the place of wonderful Gay Strutt in becoming the president of the Friends of Ipswich Museum and I

was delighted to accept.

I was very glad to meet quite a few members at the AGM and I was particularly interested to hear the talks about various aspects of the museums, and the plans for the new buildings will clearly be the subject of great debate in the near future. I subsequently enjoyed a very happy and delicious tea with the committee in Erica's sun-filled garden. I much look forward to my association with you all.

Penny



Tea in Erica's garden

Left to right:

Jean Attenborrow

John Lapsley

Paul Bruce

Lady Deben

BAfM

To learn more go to:
www.bafm.co.uk

FoIM is affiliated to The British Association of Friends of Museums (BAfM). The BAfM is an independent organisation established in 1973 for Friends, volunteers and supporters in museums, galleries and heritage sites in the UK. It offers a friendly and practical network of support from people with first-hand experience of running Friends organisations, acts as a clearing house for common problems and their solutions, and is a central source of information about Friends for Friends.

The BAfM has an extremely informative website providing lots of useful information on a range of activities including promoting our museum, fundraising and codes of ethics!

Friends' Summer Party

17 June 2015



Paul Bruce telling the Friends about Bernard Reynolds' sculpture (on right) in memory of the Gondris family

About 60 Friends enjoyed strawberries and Pimms in the Courtyard of the Mansion on a balmy June evening. Although it looked like we were going to have to dodge some showers, we managed to stay outside to hear Paul Bruce tell the story of the sculpture in the garden by Bernard Reynolds. It was commissioned by Tom Gondris, who came to England on the wartime *Kindertransport*. The sculpture is a memorial to his family, who perished in the Holocaust.

Bernard Reynolds was head of sculpture at Ipswich School of Art. His predecessor, Alan Bellis, sculpted the relief of Cardinal Wolsey which is over the garden entrance of the Wolsey Art Gallery.

Museum Garden Update

Sheila Brooks and Mary Halliwell continue to work in the Museum Garden. The garden has been very colourful since January when the

winter flowering cherry opened its buds, followed by crocuses and daffodils. The ivy has now been eliminated from the main growing area and plants grown from seed in Mary's greenhouse have been planted: *Cobea Scandens* is now growing on the old tree stump and gaillardias and heliotropes have been planted to replace the daffodils.

All the existing plants were trimmed back over the spring and are thriving without the ivy. The Friends contributed a dogwood (*Cornus Alba Baton Rouge*). This has beautiful red stems and pale green leaves, plus clusters of white flowers in Spring. It is planted by the entrance to the Paccitti Company.

Looking for an ORIGINAL gift?

THE
MANSION TOUR
GIFT VOUCHER
is the UNIQUE answer!

The Voucher entitles one group up to a **maximum of four people** to attend a Special Guided Tour of Christchurch Mansion.

The Voucher is presented in a Gift Card and envelope, with instructions for arranging a specific date and time for the tour.

One copy of the Mansion Souvenir Guide Book (RRP £5) is also included.

The cost of the Voucher is £20.00

Order by contacting **01394 211684**
or by e-mail to bkw2k1@ntlworld.com

CHRISTCHURCH MANSION

FoIM Expedition to Imperial War Museum, London - Feb 2015

In February, a group of Friends visited the Imperial War Museum, London. I had been to the IWM before - as witnessed by a family photo of a 13 year old boy standing in front of a tangled bit of metal (midget submarine?) circa 1961. The visit was prompted by an article on the reopening of the IWM London after a £40 million redevelopment programme. Our trip was timed to take in the British Art of the First World War exhibition which comprised pictures by the 'Who's Who' of WWI artists: William Barnes Wollen, Walter Sickert, Stanley Spencer, Paul Nash, Percy Wyndham Lewis, William Orpen, George Clausen, Gilbert Rogers and of course, Anna Airy.

At a rather early hour, the group of 34 Friends set off for London with John, our cheerfully optimistic coach driver in his usual good form. The journey into London was uneventful and John gave an entertaining, impromptu tourist commentary as we travelled through docklands and into central London. On arrival at the IWM, we suggested to John that we would leave at around 15:30: "so soon? no need to leave so early." he said. We explained that we wanted to be out of London before the rush hour and as we had arrived ahead of schedule, 15:30 would be fine.

From the outside the IWM is unchanged, but inside, the new full-height atrium is quite stunning and the scale is disconcerting when you realise that there are full-size aircraft suspended in the space. For those who had visited the museum some time ago, another major change was in the

interpretation of exhibits. The displays use social history stories interwoven with human experience as a counterpoint to the technology and the grim reality of conflict. Tucked away between the big-ticket galleries are some real gems: the Extraordinary Heroes (military and civilian awards) gallery on level 5 brings home the personal side of heroism and is displayed in a way that focuses on the person rather than the cause. The quite understated War Story on level 1 comprised photographs and video of the aftermath of the withdrawal from Afghanistan - thought provoking.

The Truth & Memory exhibition made a big impact. The first Gallery focused on artists who created their art at the front - Wollen, Sickert, Nevinson & Nash. It was initially difficult to appreciate the art on account of the thought-provoking content - certainly not the glorification of conflict. The second gallery contained works that were created by artists when they were in the UK. At the entrance was a striking oil on glass painting by Eric Kennington and in the final room was **The Munitions Factory** by Anna Airy. Both of these pictures deserved time to take in the detail and the underlying story.

The big-ticket galleries are the Holocaust Gallery on Level 3/4 and the First World War gallery on Level 0. Both are major exhibitions in their own right and the WWI gallery is a day outing in itself. Linked with the WWI gallery is a large collection of contemporary paintings by amateur and professional artists - unique, personal



observations of the time.

The overwhelming sense of the day was that there was too much to take in on one visit; the galleries and their exhibits deserve to be studied, not just looked at and passed by.

After a day in the museum (and of course, at least 2 visits to the café) we gathered to await the arrival of the coach which was spot on at 15:30. The party set off for Ipswich in good form

Very soon, we slowed to a snail's pace - well, not even that. "Always like this" reported John, "it will be a short wait". Twenty minutes later and a few yards further on, the 'short wait' converted to 'medium wait' and in due course to a 'long wait'. It did give us an opportunity to study closely the small business enterprises of East London, the locals, what they had in their shopping bags and the notices in shop windows.

Not only was the A10 gridlocked, but also the A11, A12 and the A13. All solid, stopped, going nowhere. Time passed and we managed to escape the

clutches of London gridlock and headed for Chelmsford when John broke it to us that he was running out of driver-hours and he would have to stop at Chelmsford for him to have a legal break. This was greatly appreciated because we needed refreshment after the time spent studying East London in close detail.

This was not the end of the expedition. At Chelmsford, a lorry driver explained that the A12 was totally blocked North of Chelmsford and we would have to route via the A120. In the end, we reached Ipswich at some very late hour which I have conveniently forgotten. All in all, a memorable trip for two reasons, one the IVVM and secondly the journey which in terms of time, was probably a record. Nevertheless, the Friends are a stoic group and took the experience (outwardly anyway) in good spirit. Our coach driver John was outstanding and he made sure that although late, we got back safely.

John Lapsley

Introducing Carole Jones

Since the recent elections Carol Jones has become the Ipswich Councillor with a special interest in the Museum Service. We invited her to introduce herself and tell us about her favourite object. (Carole's photograph appears on the back cover.)

I'm originally from Wales, but came to Suffolk over 30 years ago for a new job (head of English at Stowupland High School.) I was a councillor on Mid Suffolk district council for 10 years, and after moving to Ipswich was elected in 2004 onto the Borough Council. I love art, I love visiting galleries and museums, and a little while back I did a fine arts degree at UCS, graduating in 2008 – they were three of the happiest years of my life! My main second-year project was based on the Reverend John Stevens Henslow and Ipswich Museum. So I'm really pleased to have the museums in my portfolio.

The John Constable exhibitions at Christchurch Mansion have been a wonderful magnet. They've attracted thousands of people to the Mansion, and will continue to do so – and our ambition must be to work out ways of drawing those people back once 'The Great Salisbury' has gone on its way. The High Street Museum project is of course the major challenge over the next few years; winning substantial funding at a time of public sector cuts is never easy, but we have great museum staff, and great supporters like the Friends, and if we work together we give ourselves and Ipswich the best chance of succeeding.

I was asked to choose a favourite item

from the collections, and I've selected Constable's two gardens – his mother Ann's flower garden, and his father Golding's kitchen garden. I love them because they are small, intimate paintings which Constable never sold – they were found in his studio after he died. That tells me he carried a corner of Suffolk in his heart all his life, and everything that meant to him – family, love, landscape, encapsulated in these two views from the upstairs windows of East Bergholt House. They demonstrate for me the importance in his work of the 'ordinary' world, nature and people not romanticised or embellished, but painted as he saw and felt them. They are wonderful pieces for us to have in Ipswich.

Carole Jones

ART WORKSHOPS

A relaxed and friendly group of all ages and abilities: sharing ideas, being inspired and encouraging each other to learn and develop!

Oriental Workshop

Sat 18th July 2015

*Utagawa Hiroshiga; Chinese brush painting;
acrylic on velour paper*

For more information call Geraldine
01473 729306

www.saa.co.uk/art/geraldinesp

Competitions for Suffolk Museums

Every year there is a competition to select the Best Museum in Suffolk and the Best Museum Object in Suffolk. The winner is decided by the number of voting slips received. The results will be announced in August. Friends can vote by visiting the Ipswich Museums or using voting slips in the local paper.

There are more than 50 museums in Suffolk—see the Suffolk Museums Website: <http://www.suffolkmuseums.org>

Every year each Museum is invited to compete in the Suffolk Museum of the Year Competition and enter an object for the Object of the Year Competition.

In the case of the Ipswich Museum the management decides which of their museums should be entered for the competition. This year the Mansion has been selected. The management chose Trooper Smith's Uniform as the object. (see front cover) This can actually be traced back to being worn in the Battle of Waterloo – which, I am sure you are aware, was 200 years ago this year.

Voting for the Museum of the Year

There are three voting boxes in the Mansion: in the Main Hall, in the Wolsey Art Gallery and in the Fonnereau Café.

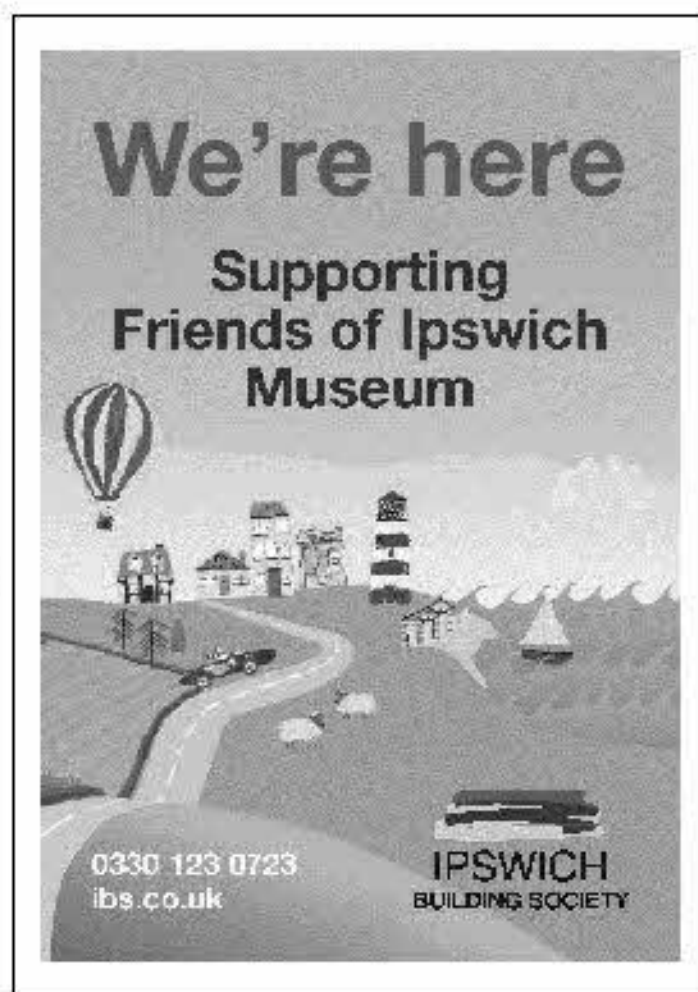
All voters have to do is fill in their name. Additionally they can fill in their postcode and what they like best about the museum – this is, according to Ruth Gillan (the lady running the scheme) purely for research. Also the participating museums absolutely love hearing what visitors enjoy most.

Voting slips have to be sent back to the competition organisers by 21 Aug. To be sure your vote is counted please cast your vote by 19 Aug.

Some FoIM members may find the slips published in the East Anglian Daily Times on Saturdays. You need to enter Christchurch Mansion as your choice. The slip has to be posted to the address provided in the EADT.

Voting for the Object of the Year

This is will be an online voting poll on the Suffolk Museums Website. The poll will appear on the left side of the screen. The voting for this will open towards the end of July – at the time of going to press this date is unknown.



Conservation Corner

Bob Entwistle tells us about preparing for the Battle of Waterloo display in the Mansion and changing the exhibition in the Wolsey Gallery

In the Spring Newsletter I reported that the conservation volunteers have been cleaning swords. Since then they have graduated to cleaning guns and helmets.

1815 and All That

Because we are not blessed with a surfeit of Waterloo memorabilia I have extended the display to include the later Nineteenth Century as well.

This way we can include objects from the Crimea and later conflicts. Some of

these objects have not been on display for a long time, if ever. They include some rare Russian helmets and muskets captured at Sebastopol.

I wanted to put a large mortar shell in the display but it was too heavy to lift!

Anna Todd and volunteers have been placing uniforms on mannequins at the Mansion ready for the display. The star Waterloo object is Trooper Smith's uniform worn at Waterloo (see front page). Trooper Smith came from Melton



The display in the Rococo Room

Russian Musket
with Sebastopol
Plaque and Arms
of Nicholas I.



and served throughout the Peninsular War and the 100 Days War. We also have his medals and his tobacco box.

We are also putting a small display in the Town Hall to mark the anniversary and this will include his medals and a few other objects.

The Volunteers thought the display was too male orientated and so a lady's dress coat of 1815 style (see back cover) is also being displayed.

I would like to thank:

Glynis for helping Anna put the uniforms on display and making arms for the

costumes;

Stella, Geoff, Rowell, Carrie and Jenny for cleaning swords, guns, helmets etc.

I would like to thank the FoIM for a grant allowing me to employ Anna, a textile conservator from Stowmarket, to help with the uniforms, and also for paying to have stands made for the mannequins.

Five mint condition Brown Bess muskets, British helmets, and some French cavalry helmets (see back page) are on display in the Library at the Mansion. And a selection of swords will



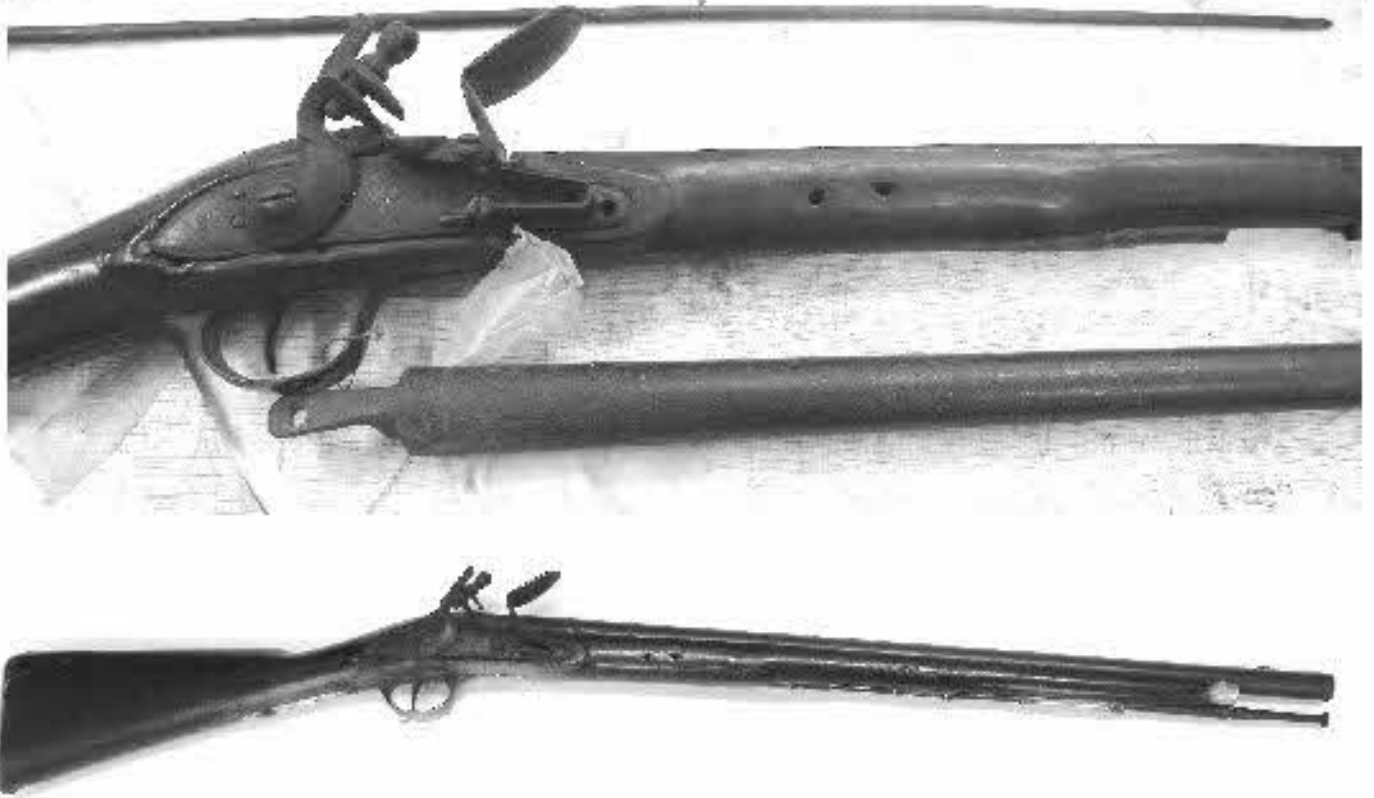
For a more personal approach to all of your
business & personal insurance needs

tel: 01473 343390

email: info@ryan-group.co.uk

Crane Hall London Road Ipswich IP2 0AL

www.ryan-group.co.uk



The Elliot Carbine before and after cleaning and repair

be included too. Two of the swords are French. One is a particularly nasty looking Pioneer's sword with a serrated edge.

Crimean and later objects are on show in the Rococo Room. Captured Russian helmets and muskets, and British Enfield rifles from the Crimea are being displayed. We are also displaying a selection of carbines, later rifles, and swords. This will take us up to 1900.

The uniforms are 19th century and mostly from the Suffolk Militia and Yeomanry.

In the Music room at the Mansion we have some Napoleonic drums and a bandsman's uniform.

For the Town hall display I have come across a rare Elliot Pattern carbine

dated 1811. This carbine is also stamped with the mark of the Honourable East India Company Cavalry. The carbine was in an unloved condition. The barrel was loose and corroded and the stock was broken and dirty. Otherwise it was all intact including its ramrod.

Mr Rowell Bell, one of the volunteers, spent a long time cleaning the barrel and lock, and waxing the stock. I repaired the stock and made a new pin to secure the barrel.

We also have a French Cuirassier's breastplate and some British cavalry swords for the Town Hall.

Trooper Smith's uniform is our entry for the Suffolk Museum Object of the Year competition (see page 15) Friends and

even friends of Friends can vote for it online.

Vote early! Vote often!

Constable's Gardens in the Wolsey Gallery

Constable painted his parents' gardens in 1815. In May the display in the Wolsey Gallery was changed to celebrate the bicentenary of the paintings. We took in over 20 works from the Fitzwilliam, the Tate and the V&A.

We had to re-arrange the gallery, and put some works into storage. We then had to receive the loans which had to be unwrapped, then condition reported, and fixed to the wall with a variety of strong security fixings.

I spent most of my time poring over the works and comparing the condition reports to what we actually received. Always best to be sure!

Loans to Gainsborough's House

Some of our paintings have gone to Sudbury on a short loan whilst the

Garden Exhibition is on in the Wolsey Gallery. These needed condition reporting and wrapping. I always find condition reporting a particular onerous task. Every part of the painting, including the frame, front and rear has to be photographed and documented. All the damage has to be noted. The painting has to be taken apart, and removed from its frame to get a good view of its condition. Then all this has to be written up.

This can take up to 2 days per painting. Then the paintings have to be packed for transport. This can take two or three people for a large work.

The good thing is that I usually get to go with them. However this time it's only to Sudbury. Nice but not really exotic.

Bob Entwistle
Conservator

Editor's Note: The display at Gainsborough's House of **Great Art in Suffolk Museums** runs until 18 October 2015.



Dummett Copp
PATENT & TRADE MARK ATTORNEYS

Recent Acquisitions

Joan Lyall reports on an oil painting and some ladies fashion items given to Ipswich Museum this year. IPSMG:R.2015.n.n are the accession numbers indicating items acquired in 2015

An Oil Painting by Jacob van Ruisdael, IPSMG: R.2015.1

Path through a Wood is a framed, unglazed oil on canvas painting. There is a small circular sticker on the reverse of the frame 'Norwich Castle Museum 104.17.13', which records that the painting had been on loan to Norwich Castle in 1913.

Gainsborough was known to be influenced by Ruisdael.

A Collection of Ladies Clothes

IPSMG: R.2015.4: Pair of brown coloured women's platform shoes, size 6 ½. made by Dolly Mixture in Britain were donated.

The donor bought them at either Mansfield or Dolcis in Ipswich circa 1970.

IPSMG: R.2015.6.1: Silk day dress with short sleeves in a blue and white gingham style weave, made by Hardy Amies of London.

IPSMG: R.2015.6.2: Two piece, eau de nil and white bouclé check, woven woman's suit. The suit is a size 16 and the maker was Jaeger.

IPSMG: R.2015.6.3: Pale cream or stone coloured patent leather handbag with a short strap and with gold coloured hinges at the top. The maker's name, 'RAYNE' is stamped in gold above the internal zip.

IPSMG: R.2015.6.4: Pair of navy blue leather shoes trimmed with white, with

peep toes and shaped open sides. The heels are five centimetres high and the shoes were made by Salvatore Ferragamo of Florence, Italy, (image attached).

IPSMG: R.2015.6.5

Pair of bone coloured leather casual shoes with a gold coloured buckle and stone coloured Petersham ribbon bow. The heels are four centimetres high and the shoes were made by Salvatore Ferragamo of Florence, Italy, and have their original red box.



The Hardy Amies gingham dress (left)

The navy blue peep toe shoes (below)



Joan Lyall

Collections Information Officer

Meet our new Artist Ranger:

My name is Lisa Temple-Cox, and I am Ipswich Museum's newly appointed Artist Ranger! This Arts Council England funded position is part of the 'Happening on the High Street' project – a programme designed to develop partnerships and create an exciting series of contemporary arts events across the Ipswich Museum site.

I have a great fondness for the museum, forged during my time as an art student at the neighbouring art school – now gallery – nearly thirty years ago. As a visual artist with a practice that engages with museum collections, I am incredibly excited by the challenges and opportunities that this job presents. My role is variable and covers many facets, but I think what is important is to really



develop a sense of excitement and awareness about the things that will be happening with the Museum and art gallery, in advance of the IAMS development proposal. I'm hoping to raise the profile of the museum and its collections, and introduce it to wider audiences.

So why the job title? Well, I will be ranging between sites, and between the museums' partner organisations, to generate collaborative and cross platform approaches to working with the collections through contemporary arts - to offer different perspectives to the museum's incredible store of objects, paintings and artefacts. I'm very much looking forward to developing my role and making things happen, here on the High Street.

Lisa Temple-Cox

Coes - A world of Fashion
 MENS • WOMENS • CONTEMPORARY
 CASUAL • BUSINESS • LEISURE • SPORTS
 FORMAL • CHILDRENS • SCHOOL
 WEDDING & EVENINGWEAR HIRE
and so much more!

Coes Ipswich 20-28 Newnham Road IP1 2VH
 Open Tues - Sat 9 am - 8 pm (Close Mon) Customer car park at rear of shop
 Tel Ipswich (01473) 258061 Fax (01473) 254531 email info@coes.co.uk
 Menswear branches also at Baceice Dovercourt Felixstowe Lowestoft & Maldon

www.coes.co.uk

Highlights of our Annual General Meeting on 15 April

Erica Burrows chaired the meeting and reported on a very successful year. She thanked Gay Strutt our retiring President and welcomed Lady Deben as our new President.

Barbara Cole was presented with a bouquet to thank her for her work as Membership Secretary. Barbara remains on the Friends Committee. Jean Attenborrow is the new Membership Secretary. Jerry Latham has retired from the Committee, and was replaced by Dominic Wall. (The new committee is listed on the next page.)

Peter Stockdale presented the Treasurer's report. He noted that our income was similar to the previous year, but expenditure was higher as we had contributed more to Museum acquisitions.

Bill Seaman, Museum Manager, told the meeting how the recent investment in Colchester Castle had led to significantly improved visitor numbers. Visitor numbers had shown an improvement in Ipswich, and he anticipated that the proposed High Street improvements should lead to greater increases in

visitor numbers.

Bill explained that changes in primary school curricula have significantly reduced school visitor numbers. The Museum Service needs to adapt to the new curricula. Another avenue being explored is working with University College Suffolk, which is helping to encourage a new agenda for museums.

Bill thanked FoIM for their support and particularly welcomed help with the provision of non-reflective glass for some of the pictures on exhibition.

Jayne Austin said that an Arts Council grant has been obtained to support work in the Art School. In addition to which a post of Artist will be filled shortly, to help develop an ongoing programme for the Art School. In answer to a question as to whether Leonard Squirrell's watercolour paintings could be displayed in the Art School, she explained that the current light levels were unsuitable for displaying watercolours, but future plans would include solving this problem.

The meeting ending with a vote of thanks to the newsletter editor and the gardening volunteers at the Museum.

Our Corporate Members

Art Workshops

Barnes Construction

Belvedere Reproductions Ltd

WD Coe Ltd

The Dove Street Inn

Dummett Copp

Glasswells Ltd

Gough Hotels

Ipswich Building Society

The Ipswich School

Ipswich High School for Girls

Ipswich & District Hoteliers Association

Kersey Solicitors

Ryan Insurance Group

Suffolk New College

Watson & Hillhouse

The FoIM Committee 2015-2016

President:	Lady Deben
Vice President:	Paul Bruce
Chairman:	Erica Burrows
Vice-Chairman:	John Lapsley
Secretary:	Gary Butler
Treasurer:	Peter Stockdale
Membership Secretary:	Jean Attenborrow
Corporate Membership Secretary:	John Lapsley
Newsletter Editor:	Mary Halliwell
Website Manager:	Dominic Wall
Members:	Sheila Brooks, Barbara Cole, Kathleen Daniel
IAA Representative:	Mary Hollis
Ipswich Society Rep:	Ken Wilson
Ex-officio Member:	Bill Seaman, Museum Service Manager

All members of the Committee can be contacted via
our Website: www.foim.org.uk
or c/o Ipswich Museum, High Street, Ipswich IP1 3QH

Membership Details

Membership rates are:

Joint/Household	£15
Single	£12
Student (under 25)	£3
Corporate	£100

These are the minimum fees. We would not dream of preventing anyone paying more. A membership form can be downloaded from our website or contact our Membership Secretary:

Jean Attenborrow (☎01473 213025
jattenborrow@hotmail.co.uk)

Those interested in becoming corporate members should contact us direct via the website.

Membership as a Gift

All you have to do is send the appropriate subscription (payable to FoIM) together with contact details of the recipient to Jean Attenborrow, who will prepare a gift pack for you to send.

In this issue:



Councillor Carole Jones tells us about her favourite object

see page 14

Friends listen to Paul Bruce at their Summer Party
see page 11



www.foim.org.uk

Registered Charity Number: 275527

*We welcome new members to help us support our excellent Ipswich Museums.
Details of membership are given on page 23*

We use the website to advertise events which are notified too late to be printed in the Newsletter.