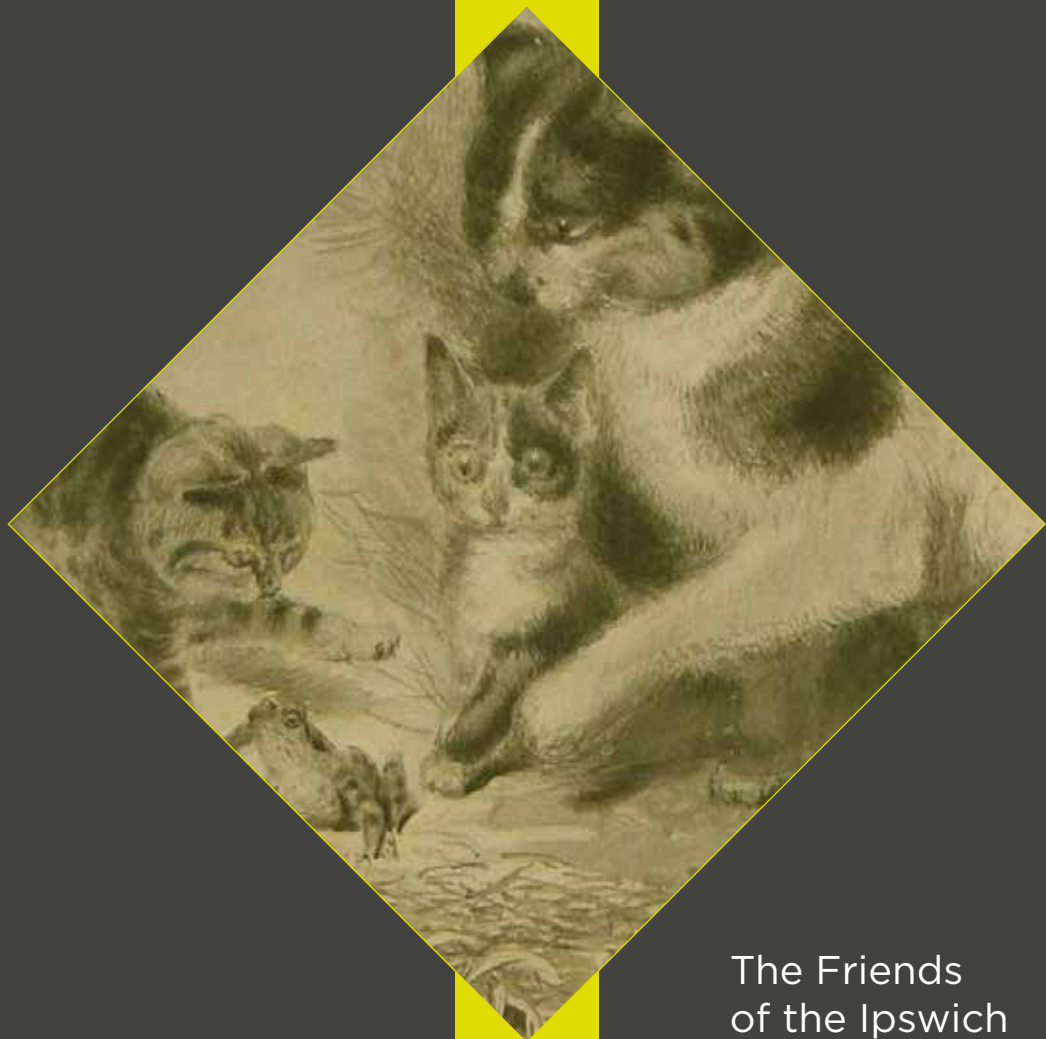


Artful  
Animals



Newsletter  
Spring 2023



The Friends  
of the Ipswich  
Museums

We Look Forward to  
Promote the Past

# Chair's Message

by Richard Wilson

It was with very mixed feelings that I went to take one last look at Turner's *Walton Bridges* before it left us. Sadness that it was going, but great pride that the Friends' £10,000 donation had brought it here as the catalyst for the remarkable *Landscape Rebels* exhibition. This is just one shining example of how the Friends make a real difference. Another is that with the recent announcement of the £75,000 grant to the Friends from the Foyle Foundation, we have helped to

raise or donate over £250,000 for the redevelopment of the Museum, something we should all be very proud of.



More successes for the museums are outlined in Alison Hall's report (pages 4 & 5) and I hope that you can join us at our AGM (page 8) to hear Alison with her colleague Aurogeeta Das outline how the restoration project is progressing.

## Contents

Ipswich Museums Report .....	4
Events .....	6 - 11
Event Reports .....	3, 12 - 13
Lord Kitchener's Boots .....	14
Confessions of a Guide .....	16
My Favourite Thing .....	18
Paul Bruce Obituary .....	20
New Members & Angels .....	22
How to Pay Us .....	23

Front Cover: *Cat and Kittens Playing with a Frog*, detail, by George Thomas Rope 1846-1929.

All *Animals in the Art Gallery* images are courtesy of East Anglia Traditional Art Centre.

We are also arranging a behind the scenes tour (page 6) and a consultation evening (page 9) when we hope that as many of you as possible can contribute to the emerging plans for the displays.

*Animals in the Art Gallery* follows on from *Landscape Rebels*, and I look forward to seeing you at our special preview with Emma Roodhouse (page 7) or at one of our other events over the coming months.

## Spirit of Place

---

On 30 March we were delighted to welcome noted author Susan Owens to the Mansion for an illuminating, thoughtful and thought-provoking evening centred around her book, *Spirit of Place*. Susan shared with us how our landscape has been framed, re-imagined and reshaped over many centuries by generations of writers and artists.

Sadly, Lord Deben who was scheduled to engage in conversation with Susan about how the artists of the future might respond to landscapes now threatened by climate change, erosion, drought and man's often malign influence, was derailed by the latter when an eight-vehicle crash on the A12 thwarted his plans. Richard Wilson took his place, and interesting questions from the audience led to a very engaging conversation about how artists might respond to our changing environments.

Susan was a wonderful speaker. Do look out for her latest book *Imagining England's Past: Inspiration, Enchantment, Obsession* published by Thames & Hudson this month, which takes a long look at the country's invented histories from the glamorous to the disturbing, from the eighth century to the present day.



# Ipswich Museums Report

Alison Hall, Ipswich Museums Manager

---

There has been a lot going on at Ipswich Museums since I last wrote to you all.

Christchurch Mansion had a very busy February half term, with over 600 people on each of the days we held our 'Love Nature' family events which drew on the themes of the current *Landscape Rebels* exhibition. Families took part in a range of activities, including meeting experts, making fat balls for birds, and learning about our local environments.

If you've been past Ipswich Art Gallery recently, you may have noticed it's been surrounded by scaffolding. This is now starting to come down, as works to repair and maintain the roof are completed.

## Project Update

Since Ipswich Museum closed at the start of October, the team has been busy packing and moving everything in the Museum, from the smallest coins to large and heavy items that have needed help from specialist contractors and lifting equipment. It's been a huge amount of work to ensure each item has the most appropriate packing, handling and storage for its specific needs. For a number



of objects, the decant team had to make bespoke boxes and crates owing to their particular size and nature, and many of the objects have been cleaned and dusted as they've been packed. Documentation is also an important part of the process, updating records as every item is moved, so its new location is accurately recorded.

## Designation News

I am absolutely delighted to inform you that Ipswich Museums' Post-Cretaceous geology collection (i.e. specimens more recent than the extinction of the dinosaurs), which includes our outstanding ice age collection, has been awarded Designated status by Arts Council England. The Designation scheme is administered by Arts Council

England and identifies the pre-eminent collections of national importance held in England's non-national museums, libraries and archives, based on their quality and significance. The award is a mark of distinction that recognises collections of outstanding quality, and which are essential research resources, making a significant contribution to the public understanding of the subject. This news is very timely indeed as we shape our new Museum at Ipswich. We can build the international significance of these collections into the new displays, so visitors can be proud of this outstanding collection which is right on their doorstep.

### **Museums + Heritage Awards shortlist**

I'm also very pleased to be able to share that for the third year in a row we are up for a Museums + Heritage Award after winning the Community Impact Award in 2021 and Exhibition of the Year in 2022! This time we are shortlisted for our work with the DWP/Jobcentres in the Partnership of the Year category. This category recognises partnerships that demonstrate creativity, significant impact on people, and ongoing legacy.

Ipswich Museums, the Department of Work and Pensions Suffolk (Ipswich Jobcentre Plus), and

Suffolk Family Focus have been working together since 2015 to create opportunities, sometimes in surprising places, to help people learn and flourish through culture. Together, we have built our activities from craft tables in the Jobcentre's entrance to week-long takeovers with live animals, shared meals, and dance, empowering people to enjoy their local cultural offer and get creative on their own terms. Throughout 2022, we shared our pioneering approach with other Jobcentres and cultural organisations all over East Anglia to create a Cultural Jobcentres Model, which we hope will roll out across the UK. To date this work has involved collaboration with over 50 partner organisations and countless families, to create high-quality and highly accessible cultural opportunities. The winners will be announced on 10 May.



Left and above: Scenes from the decant

# FoIM Event

## 'Behind the scenes' - exclusive tours of the Museum

**Thursday 11 May**

11am and 2pm

**Venue - Ipswich Museum** (meet at the side entrance on High Street)

**Free - Members Only - booking required**

We are offering two exclusive 'behind the scenes' tours of the Museum to enable members to see just what is happening at this stage of the redevelopment project. You will have the opportunity to experience the exhibition spaces mostly devoid of displays, examine in detail some of the challenges facing the redevelopment team, and discuss with Museums Manager Alison Hall and her colleagues how the challenges they face will be approached in the coming months.

Numbers are strictly limited to 15 per tour and although there is no charge, booking is required by emailing [contact@foim.org.uk](mailto:contact@foim.org.uk). Please state which tour you would prefer, or indeed if you are available for either one, and we will confirm details before the day.



*Ipswich Museum* Frank Woolnough

## Animals in the Art Gallery Preview

**Monday 15 May**

2.30pm

**Venue - Wolsey Art Gallery**

**Cost - Friends £7, Guests £10 (includes tea/coffee and cake)**

Booking via [contact@foim.org.uk](mailto:contact@foim.org.uk). See page 23 for payment details, please add ANIMALS for reference.

Be among the very first to experience the next exciting exhibition at the Mansion, *Animals in the Art Gallery* (see the back page for details).

In this private view - when the Mansion is otherwise closed - our wonderful art curator Emma Roodhouse will introduce the artworks and share with us some of the stories that lie behind them. After the tour, have a chat with Friends whilst enjoying a cup of tea and a slice of cake.

*Study of Sleeping Ginger Cat*  
George Thomas Rope  
(1846-1929)



*Chicken*  
George Thomas Rope

# FoIM Event

## Annual General Meeting of the Friends

**Wednesday 24 May**

6.30pm for 7.00pm

**Venue - Christchurch Mansion**

**Free - Members Only**

We encourage all members to join us for our AGM to hear about our activities, discover how we've been supporting the museums over the past year, and help us to shape our future. Minutes of last year's AGM and our Accounts will be available in advance on our website.

After the business part of the evening, Alison Hall, the new Ipswich Museums Manager, will sketch the background to the Museum's redevelopment project, outline its key objectives and speak about its ongoing progress. She will cover both the pragmatic aspects of the Museum's redevelopment as well as touch upon some of the underlying rationales that underpin the project.

Aurogeeta Das, Senior Curator, Cultural Policy, will speak about what it means to consider the rich history of the Museum's foundational goals and its collections against the backdrop of the redevelopment project. She will then discuss why and how a reassessment of the Museum's collections and displays would enhance their relevance to contemporary society in Ipswich and beyond

Refreshments (wine and soft drinks) will be available.

**For the latest information about all our events,  
please visit our website:**

**[www.foim.org.uk](http://www.foim.org.uk)**



## Museum Redevelopment Consultation

**Wednesday 14 June**

6.30pm for 7.00pm

**Venue - Christchurch Mansion**

**Free - Members Only**

We are delighted that our members will have this opportunity to be directly involved in the consultation process as to how the Museum will look when it is unveiled at the end of the redevelopment process.

Contrary to some earlier speculation, displays, layout and content of the revitalized Museum are not yet set in stone. CIMS are undertaking widespread community consultations to help crystallize just what the people of Ipswich would like to see after the galleries have been renewed, and we are very pleased that they are canvassing us for our thoughts. Of course, we will all have our own opinions, passions and memories, and it is important to recognise that others may not share ours.

Many of the Victorian display cases are listed so we will see little change there, but Museums Manager Alison Hall will share with us current thinking and lead a discussion as to how our very special heritage asset will be preserved, improved and enhanced.

**Booking is not required for this free event, but it is limited to members only.**

**Information on the Ipswich Museum  
redevelopment can be found at:  
[www.ipswichmuseum.co.uk](http://www.ipswichmuseum.co.uk)**

# FoIM Event

## Visit to Benton End

**Tuesday 20 June 2023**

10.00am - 12.30pm (On arrival ask for Lucy Skellorn)



**Venue - Benton End, Hadleigh, IP7 5JR**

**Cost - Friends £20, Guests £25, including light refreshments**

This is a rare opportunity to visit the former home and art school of the celebrated artist-plantsman Sir Cedric Morris and his partner, artist Arthur Lett-Haines. You will be given a tour of the beautiful 16th-century Grade II house and its 3-acre garden which is currently closed to the public but is set for a revival having been recently acquired by the Garden Museum in London.

Visitors can hear tales of this remarkable art school that inspired so many, including Lucian Freud and Suffolk's own, Maggi Hambling. Outside, enjoy plants dubbed 'Cedric's Ghosts', remnants of this once-renowned garden. There will be a chance to hear about plans for the future to re-open as a centre for artistic and horticultural education and speak to the recently appointed Head Gardener and Project Director about the development of the site.

A donation will go to The Benton End House & Garden Trust, a subsidiary charity of The Garden Museum.

**Early booking is recommended for this event** as there are only 30 places available. Booking via [contact@foim.org.uk](mailto:contact@foim.org.uk). See page 23 for payment details, please add BENTON for reference.

Disabled parking only at Benton End House. We will try to accommodate you on a first come first served basis. Please book this prior to your visit with [contact@foim.org.uk](mailto:contact@foim.org.uk)

Free parking is available in Hadleigh behind the Co-op, on Magdalen Road. It is then a 15-minute walk south along Benton Street to Benton End.

## Friends' Summer Party

Wednesday 5 July

6.30pm for 7.00pm

**Venue - Christchurch Mansion**

**Cost - Friends £15, Guests £20, to include strawberries and cream and a glass or two of Pimm's, wine or soft drinks**

We are hoping for fine summer weather so that we can enjoy good conversation, tasty refreshments and some lighthearted and culturally focused entertainment in the Mansion courtyard.

**Booking is encouraged for this event** so that we can cater effectively. Please use the payment details on page 23 with the reference SUMMER and ensure that you have confirmed your booking by emailing [contact@foim.org.uk](mailto:contact@foim.org.uk)



## Stop Press - Julia Heseltine 1933 - 2023

---

As we were going to press we heard the sad news that Julia Heseltine passed away just before Easter. The Friends recently helped acquire some of her artworks, and as Emma Roodhouse writes, "It was a real privilege to know Julia, who was very modest about her artistic skills. And I am glad that the Friends were able to support the acquisition of her pieces into the Ipswich collection before her passing. She was very proud to have work recognised locally and in *Landscape Rebels*."

# Friends Christmas Party

by Erica Burrows

---

The Committee was delighted that our first Christmas Party at the Mansion since relaxation of Covid rules proved to be very popular. Around 70 people enjoyed a delicious buffet supper provided by Vicki Breeze-Lamb from Patisserie 4U. Vicki has been catering our Christmas parties for well over a decade and we are grateful to her for always providing us with tasty treats.

After supper, we were entertained by Mansion Guide James Hayward as Mr Kilderbee, whose Christmas plans were thrown into disarray by his good friend, Thomas Gainsborough. Reading extracts from actual letters written by Gainsborough, Mr Kilderbee's household hurriedly made



arrangements for their unexpected guest. James's wife Lynne and his daughter Ruth were roped in as Mrs Kilderbee and the maid. Ruth ended our little diversion with a seasonal song in her clear melodic voice.

We're looking forward now to our strawberry and fizz summer party on 5 July (see page 11).

## A PEEP INTO THE PAST

The Mansion Guides are available every day until the end of October to take visitors on a free 30-40 minute guided tour. Available Tues-Sat at 11pm and 2pm on Sundays. No booking required.

Please note these free short tours are only suitable for individuals or small parties. Larger groups and coach parties can book their own full tour by arrangement from only £5 per person.

**For more information email : [contact@foim.org.uk](mailto:contact@foim.org.uk)**

# Ipswich Weekender

## Domestic Life at the Mansion

---

Mr Fonnereau and his Steward (aka Mansion Guides James and Robert in 18th-century costume) were on hand on 11/12 March for a special Ipswich Weekenders event.

Over 150 visitors came to hear about the domestic life and sanitary (or insanitary) arrangements in place when the Mansion was a family home.

Erica was dressed as a 19th-century parlourmaid and brought her own prop, part of a 19th-century ensuite!

Left to right: Robert, Erica and James

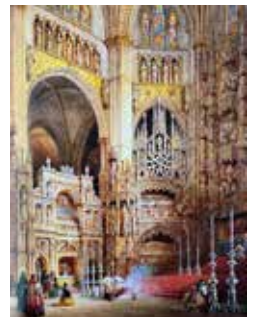


## Eighty Ipswich Portraits

---

In February, Richard Wilson gave an illuminating and insightful talk about the artist Samuel Read and his *Eighty Ipswich Portraits* sketchbook, one of the Museums' latest acquisitions (supported by the Friends). Read was a prolific and popular watercolourist, and a regular contributor to the *Illustrated London News*, and his 1837 sketches of Ipswich's notable, curious and engaging personalities are a fascinating record of early Victorian life in the town.

If you missed it on the day, a recording is still available to watch. Just email [contact@foim.org.uk](mailto:contact@foim.org.uk) and for the small sum of £5 we will send you the login details. Payment details are on page 23 – just add the reference READ.



# Lord Kitchener's Boots

by Rowell Bell

---

I restore metal of all sorts, removing corrosion and bringing back the shine. Coins, candlesticks, coal scuttles, weapons, plus wood and leather. Brass can leach onto leather as I found with a pair of boots with detachable spurs. These were not any boots, but once belonged to Field Marshall Herbert Horatio Kitchener. He was the highest-ranking officer in the British Army to die in action in the whole of WW1.

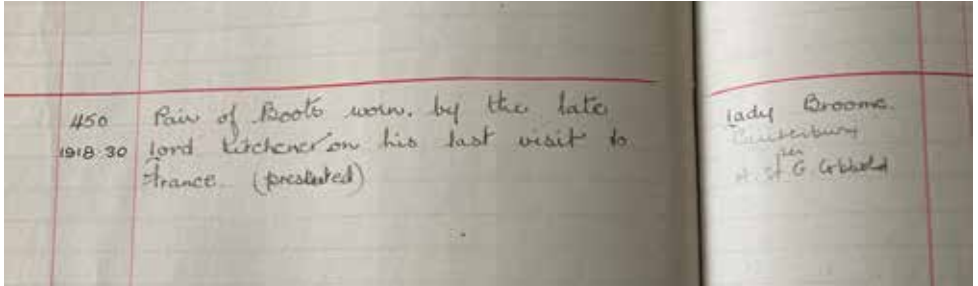
The boots seemed small for Lord Kitchener's build and height but, looking at his final picture in 1916, his shiny footwear look small too. HMS Hampshire, a Devonshire Class armoured cruiser with 749 on board, sank 20 minutes after being struck by a German mine, in a force 9 gale just west of the Orkneys at 6.30pm on 5 June 1916 on its way to Russia. He was not one of the 12 survivors.

I am sure anyone reading this knows who Lord Kitchener was and have a rough idea of his achievements and setbacks, so I am not going to repeat them here, apart from a reminder that the famous poster *Your Country Needs You* features him. Instead, I suggest reading and following the

various paths you come across. Nor am I going to explain how I cleaned the boots and spurs, other than to say not back to new, as they had been used on horseback.

Herbert Horatio Kitchener was born June 1850 at Gunsborough House in County Kerry, the third child of Lt Col Henry Horatio Kitchener and Frances Ann (Fanny), née Chevallier of Aspall Hall Suffolk; the Cobbold connection. Herbert had an older brother: Col. Henry Chevallier (1846-1937), who died aged 90 in Nairobi, and a younger brother: Lt. Gen. Sir Walter Kitchener (1858-1912), who died in Hamilton Bermuda, where he was Governor, from appendicitis. Lord Kitchener's mother was a Chevallier (Aspall) and Chevalliers and Cobbolds married each other in 3 separate generations so he rightly deserves a place on the Cobbold family tree.

All three boys and siblings were educated by governesses and tutors, until the family moved to Switzerland in 1864 for their mother's health, but Fanny succumbed to TB that year. Herbert was unhappy at school there but became fluent in French and German. He returned to



England in 1867 in poor health but worked hard and passed his examination into the Royal Military Academy Woolwich. After passing out, Herbert spent Christmas 1870 with his father discussing the Franco-German War at length, and the rest is our Nation's history.

I was in Nairobi in 1969 and Bermuda in 1970 and hope to be within sight of the Kitchener Memorial in Orkney in a few weeks. If it had not been for those boots, and seeking out the man who wore them I would not have found the brothers who worked for the heights they attained in later life.



Top: Boots presented by Lord Kitchener's nephew's wife 1918

Above right: Pair of boots worn by the late Lord Kitchener on his last visit to France

Left: The memorial erected by the people of Orkney on Marwick Head

# Confessions of a Guide

by Robert Burlinson

---

When I became a guide I imagined that names and dates would trip off my tongue. Artists and their works would be familiar and every piece of furniture would have its own unique story that I would know. To some extent that has been the case but over the years people that I've taken around the Mansion have been far more interested in how the families lived, how they got their money and how they lost it. And more importantly for me what were their domestic arrangements. Amongst my colleagues I have a certain reputation for knowing and being interested in lavatory arrangements and corsets.

Until the middle of the twentieth century there was no flush lavatory in the Mansion. Before that there was a shed, a bench with a hole or more likely holes in it and a pit underneath that was emptied periodically. Privacy was probably not an option. In the house there would have been pots for night use in bedrooms and other pots in other rooms, either kept in pieces of furniture called commodes or behind a screen, but not necessarily.

The contents, carried by servants, would have gone either to the shed or more likely directly to the compost heaps that every garden maintained. It was then used to fertilise the garden where fruit and vegetables were grown for the house. The productive garden for the Mansion was towards the Fonnereau Road entrance where there is now a copse of trees. In the town the night soil men would collect human waste and sell it to local farmers. Urine could also be sold to local tanners, situated near Civic Drive (hence Curriers Lane), as it was used in the curing of skins.

I suspect that to our noses it would have been a bit smelly in the house hence the use of perfume and pomanders, scented balls made of herbs, flower extracts and spices to cover the smell. One would also imagine that people would have been keen to wash themselves. But that seems not to have been the case. Hot water may have been provided occasionally for men to shave with and for every member of the family to wash but only a jug full. I always imagined cosy tin baths in front of bedroom fires



but in reality that would have been very labour intensive and servants had more to do than carry hot water upstairs even though it may only have been at Christmas and Easter. It is more likely that baths would have been taken in the wash room where the boiler was and that the hot water was

used by more than one person in turn of course finishing with the children. Servants would not be so fortunate and probably had to make do with the pump outside.

Corsets of course are a whole other story.



Above: A typical Victorian bedroom

**Bloomberg  
Connects**

Colchester + Ipswich  
Museums has launched  
a digital guide about  
Christchurch Mansion on

Bloomberg Connects, the free arts and culture app, available from Apple or Google. Use the guide to discover more about Christchurch Mansion's most-loved objects and displays, which you can explore in greater detail. Just download the App and get started!



**SCAN ME!**

# My Favourite Thing

by Carrie Calver

---

Hello, Carrie Calver here. In my usual capacity in CIMS I am a Museum Duty Officer. However since October, for the Museum Redevelopment, I have been given the new title of Decant Team Leader and Conservation Technician.

My job sees me managing the Decant Team making sure that all the Museum objects are suitably packed and stored safely, whilst also making sure there is a location and movement trail for each and every object in order not to lose any.

As you can imagine I have come across hundreds, if not thousands of objects so far and to pick a favourite is impossible. However, I can certainly pick my favourite gallery which I have enjoyed the most packing.



The Victorian Natural History has been an amazing gallery to pack. The gallery is teeming with taxidermy, entomology, geology and spirit specimens, all with their own unique needs when it comes to packing.

Throughout the process of packing, we have been using acid free boxes, acid free tissue, Plastazote and corex, this ensure the objects are not exposed into a harmful atmosphere. Where we have awkward shaped objects, like Sawfish Rostrums, the team have been making packaging where the structure is suitably enforced that we can pack items on top. Where possible we have been recycling wood, old gallery signs and information panels to make reinforced pallets.

Also we have been packing items in groups, such as fish, birds and reptiles. This will make the curator's lives easier when coming to choose objects for future display, they can go to one/two boxes and have full access to all the same creatures. When packing these items, the team have been thrifty in their packing, creating multiple layers in the boxes to maximise the space used.

From packing sharks teeth and mammoth bones, bagging up apes, platypuses and crocodiles, right up to getting the trophy heads down, cleaned and re-hung in store, this gallery has been great fun.

Working so closely together the Decant Team have created a close bond, we all have our own strengths that we bring to the team. Maybe the Decant Team is my 'favourite' thing! Thank You to Michael, Ashley, Peter, Tim, Caleb and Lottie for all your hard work and to Bob for the extra support.



Various scenes from the Ipswich Museum Decant Project



# Paul Bruce 1944 - 2022

by Erica Burrows

---

We are deeply saddened to have lost our Vice President, Paul Bruce, who died on 3 November. Paul was a long time committee member and Chairman of the Friends and in recognition of his very long service, was made lifetime Vice President in 2011.

Paul was brought up in Ipswich and once wrote that his love of the River Deben was fostered early on when sailing with his father. The river was a big part of his life and the inspiration for an exhibition of his work held at the Haste Gallery in 1993 called *The Deben and Beyond*. He kept a boat at Ramsholt and he was still sailing with his daughter and grandchildren just a few weeks before his last illness.

Paul was a talented artist and sculptor who studied at the Ipswich School of Art in the early 1960s under the inspiration of Colin Moss, Lawrence Self, Bernard Reynolds and John Alfred Green. Although he was offered a place at St Martin's, he went instead into the antiques business, working at Green and Hatfield before opening his own business in St Helen's Street. He became an expert on furniture over 30 years of working

in the trade and gave talks and tours on the furniture collection at the Mansion, including inviting the Furniture Society, of which he was a member, to visit. One of the Society's members, the emeritus professor of European Furniture at the V&A, was so impressed she said it was the finest teaching collection she had ever seen. In 2018 Paul wrote *The Furniture of Christchurch Mansion* published by FoIM.

For several years, he organized the very popular speaker's lunches as well as study days and many will remember the successful trips with Alan Swerdlow especially Dumfries

Right: Paul's tree planting ceremony  
Below: Giving one of his popular talks



House, with its fine collection of Chippendale furniture. Paul was able to speak knowledgeably about the collection there, which was going to be auctioned off, but famously Prince Charles stepped in to save the house and contents for the nation.

In 2011, Paul was instrumental in launching a successful appeal to buy the old Ipswich Art School building for the Museum to use as an art gallery. The Art-Deco building had become redundant after the classes moved to Suffolk College in the late 1990s and he persuaded his friend and former fellow student, Maggi Hambling, to become patron of the appeal. Together with Emma Roodhouse, over 70 works of art were auctioned, all acquired freely from former students, as well as the estate of Colin Moss and Bernard Reynolds. The auction raised nearly £77,000.



It was thanks to Paul that the *Antiques Roadshow* was brought to Ipswich in 2020. It was poignant that Sue and Paul were featured on the repeat of the show just a week after he died. Paul had brought in two works by Anna Airey, which, of course, he knew much more about than the *AR* expert!

Paul's knowledge, depth of experience and enthusiasm for the collections will be greatly missed. He has played a major role in encouraging interest and enjoyment in both the art and history of his beloved Suffolk.

His funeral took place in a packed church in Grundisburgh on 8 December, where tributes were made from all aspects of Paul's life as a sailor, an artist, a teacher and a Friend, but most of all as a much-loved husband, father and grandfather. Our sincere condolences go to Sue, Hannah, Natalia and Reuben.

Sue told us that Paul had asked for an acer tree be planted in his memory. FoIM was pleased to facilitate this request, and many friends joined his family in the Wolsey Garden on 5 April to see the tree planted. It is a fitting tribute to Paul, and a small part of him will always be close by the Mansion that he loved.

# New Members & Angels

---

## We warmly welcome our new members

David Bezant & Alan Loader	Dr David Samways
Graham H Brown	Teresa Sharp
Helen Cooper	Celia Steward
James & Fiona Crowe	Christine Steward
Alan & Catherine Forsdike	Terence Waltham
Rita Krishna & Vincent Stops	Richard M K Worman
John & Chrissie Lightfoot	Anne Wright

---

## We are very grateful to all our new Angels

Rowell Bell	- Bill Barrett (1929-2021)
	- John Bradberry - died in January 2023
	- Tony Hubbard - died in March 2023
	- Russell Leeburn - died in March 2023
	- Jase David Cherry - born December 2022 Cherubim
Denise Fiennes	- in memory of Pet Angel Seraphim Phoebe, aged 13
John Lapsley	- 2 Archangels
John Speight	- repeat Archangel
Roger Theobald	- Angel in memory of his beloved wife Gloria
Fred and JoEllen Grzyb	- generous repeat donors and Archangels

**Check the Colchester + Ipswich Museums website for  
events happening over the summer**

**[www.ipswich.cimuseums.org.uk](http://www.ipswich.cimuseums.org.uk)**

# How to Pay Us

---

- **Bank Transfer** - please use your name and what the payment is for as the reference:

**The Friends of the Ipswich Museums**

Account Number: **65886997**

Sort Code: **08-92-99**

- Cheques can be sent with a covering note to Jean Attenborrow, 3 Holly Road, Ipswich, IP1 3QN
- For annual subscriptions and membership renewals, please set up a standing order - forms can be sent to you.



## **A FoIM Gift Membership is not just for Christmas!**

If you are looking for a unique and rewarding gift for family or friends, look no further than a FoIM Gift Membership.

Gift Membership includes a free guided tour of Christchurch Mansion, and can be sent straight to the recipient on your behalf.

**Family £15 | Individual £12 | Student (under 25) £3**

Contact Jean at [jattenborrow@hotmail.co.uk](mailto:jattenborrow@hotmail.co.uk) or 01473 213025



The School of Social Sciences and Humanities at the University of Suffolk are actively engaged in celebrating the rich cultural opportunities in our region. We are delighted to be supporting The Friends of the Ipswich Museums. Our academic staff and students are committed to building our vision of a Creative Suffolk. This extends to finding new and important ways of creatively connecting students and academics with our regional museums and the wider community. New connections offer platforms for new ideas, for advancing research and for worthwhile knowledge exchange which can benefit us all in diverse, innovative and surprising ways.

We look forward to future collaborations!

01473 338000

University of Suffolk, Waterfront Building, 19 Neptune Quay, Ipswich, IP4 1QJ  
**uos.ac.uk**

A collage of circular images showing various farm activities: a person petting a horse, a child riding a horse, a cow, a pig, and a sheep. The "Easton farm park" logo with a horse head icon is overlaid on the collage.

**Easton farm park**

Meet all our amazing animals  
Hands-on farm activities & fun daily rides  
Outdoor play areas & great family walks  
Homemade treats in our café & tearooms  
Stay on the farm in our glamping cow sheds,  
our huge campsite or our holiday cottages

**eastonfarmpark.co.uk**

The logo for "The Green Room" in a stylized, white, serif font on a dark green background.

**THE GREEN ROOM**

Inspired by the cafes of Paris,  
The Green Room offers  
delicious homemade cakes,  
refreshments and light lunches

*See our website for details &  
opening times*

18 St. Margaret's Green, IP4 2BS  
**www.thegreenroom.coffee**





# Woodcock & Son

*Specialists for many years in the sales of classic and individual properties around Christchurch Park and the Town Centre. Established over 170 years we combine professionalism with a personal touch to make your move an easier one.*

**01473 233355**

[www.woodcockandson.uk](http://www.woodcockandson.uk)

16 Arcade Street, Ipswich, IP1 1EP



Supporting the  
Friends of  
Ipswich Museums

Tel: 01473 272222

Web: [www.barnesconstruction.co.uk](http://www.barnesconstruction.co.uk)



## IPSWICH SCHOOL

We create  
extraordinary  
futures



THE SUNDAY TIMES  
INDEPENDENT  
SCHOOLS  
GUIDE  
2022  
TOP 10  
FOR ACADEMIC  
RESULTS IN  
EAST ANGLIA



## Belvedere French Polishers

**Specialising in wood finishing, furniture  
polishing, furniture repair**

With more than 30 years experience, Ipswich based Belvedere French Polishers have developed an excellent reputation for high quality and attention to detail. Both domestic and commercial clients are welcome. Insurance work undertaken.

- Traditional hand-finished French Polishing
- Oiling and hard waxing
- Furniture repair & restoration
- Furniture scratch repairs
- Table tops in bars & restaurants refurbished
- Free collection and delivery

Call us on **07860 782 888** for a free verbal estimate

[www.frenchpolishersipswich.co.uk](http://www.frenchpolishersipswich.co.uk)



Dive and Explore the world's most stunning locations



Great Escapes Diving Holidays is a UK based Tour Operator, run by a team of professionals with over 45 years combined experience in the dive and travel industry.

[www.greatescapesdiving.com](http://www.greatescapesdiving.com)

### EAST ANGLIAN TRADITIONAL ART CENTRE

48 High Street, Market Square, Wickham Market, Nr. Woodbridge, Suffolk, IP13 0QS  
01728 747050 [eatac.co.uk](http://eatac.co.uk) 07960 274139

- Services offered:
- Research into East Anglian Painters working 1750 - 1950
  - Paintings investigated, analysed, assessed and authenticated
  - Valuations for Insurance, Probate, Family Division
  - Client Sales Service - we can maximise your return when selling
  - Cleaning and Restoration of oil paintings and watercolours.

Please contact John Day for complimentary advice.

**Birketts**

Clear Legal Advice

Knowledge-based  
monitored capability

**NO GOBBLEDEGOOK**

**Just clarity**

The law firm that's right for you is the one that speaks  
your language. Enough said.

Cambridge · Chelmsford · Ipswich · London · Norwich  
[www.birketts.co.uk](http://www.birketts.co.uk)



Nº 7 Quay Street, Woodbridge, Suffolk, IP12 1EX  
Telephone 01394 387210



[enquiries@woodbridgeantiques.co.uk](mailto:enquiries@woodbridgeantiques.co.uk)

[www.woodbridgeantiques.co.uk](http://www.woodbridgeantiques.co.uk)

**Sancroft**

**Sustainability  
Consultancy**

We help some of the world's leading  
companies improve their environmental,  
ethical and social impact.

[www.sancroft.com](http://www.sancroft.com)



**SUFFOLK CHAMBER  
ALWAYS ON YOUR SIDE**

As a member of Suffolk Chamber  
of Commerce, your business  
can unlock access to:

**Chamber Protection**

**Chamber Networking**

**Chamber Directory**

**Chamber Promotions**

**Chamber International**

To find out how you can become part of the best  
business forum in Suffolk contact the team:

**Tel: 01473 680600**

[membership@suffolkchamber.co.uk](mailto:membership@suffolkchamber.co.uk)  
[suffolkchamber.co.uk](http://suffolkchamber.co.uk)





*Animals in the Art Gallery* opens in the Wolsey Art Gallery on 13 May. This family-friendly exhibition, featuring some familiar creatures from Ipswich Museum's Natural History collection, will explore British wildlife alongside artistic depictions of animals in all shapes and sizes, from the Middle Ages to the present day.

Among the artists featured will be Thomas Gainsborough, John Constable, Anna Airy, Sir Alfred Munnings, George Thomas Rope (front cover), Max Ernst, Amy K Browning, E H Stannard (above), Bernard Reynolds, Leonard Squirrel, Fernand Leger and Colin Moss.

A new creative studio will also be revealed in the Wolsey Art Gallery, where visitors will be invited to make their own artistic animals: a space to play, draw and get creative with the *Animals in the Art Gallery*.



## The Friends of the Ipswich Museums

We Look Forward to Promote the Past

We welcome new members to help us support our excellent museums.

 [foim.org.uk](http://foim.org.uk)

 [ipswichmuseums](https://www.facebook.com/ipswichmuseums)

 [FolpsMuseums](https://twitter.com/FolpsMuseums)